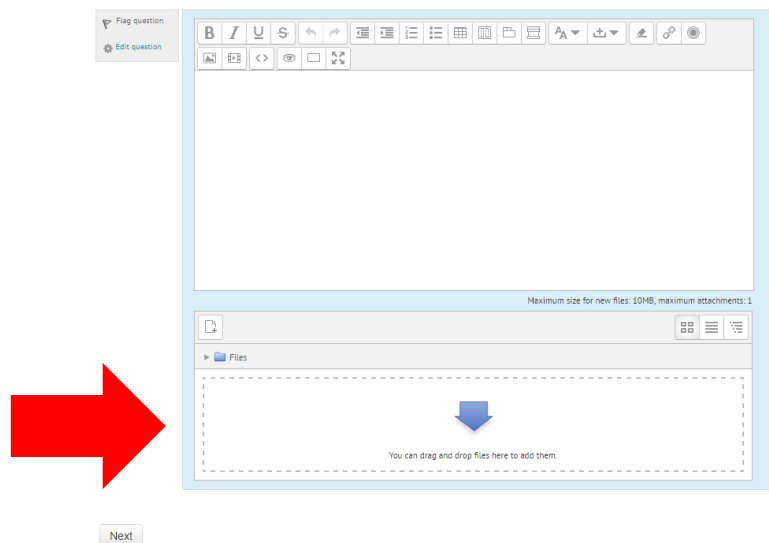


## How to Upload Hand-Written Responses to your On-Line Quiz

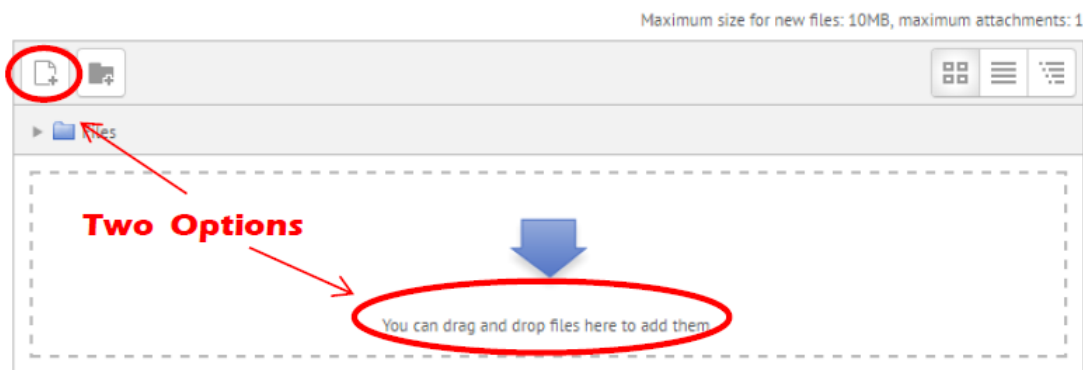
You can submit hand written work to your on-line quiz by taking a picture of your work with a cell phone or digital camera, or you can scan your work.

*Keep in mind, if you are using a cell phone to take the picture or scan the work you will need to email the picture or PDF to yourself then check your email on the device that you are using to write your quiz. You can then save the file on that device so that you can upload it to your quiz.*

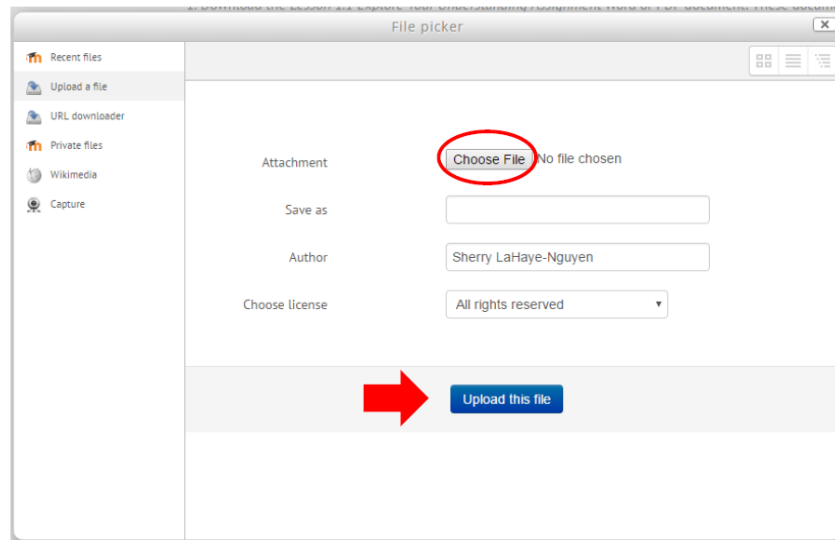
The second box in your response area of your quiz is for file uploads.



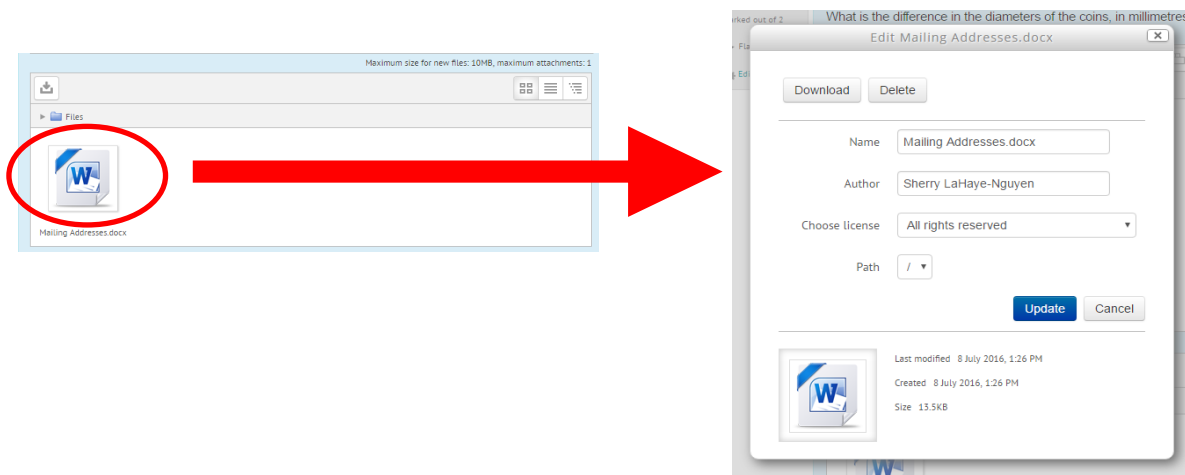
You can drag and drop your assignment file into the box where indicated or you can select the paper with a plus sign icon to browse your computer files.



If you chose to browse your files, you need to click on the Choose File button on the next screen to access your files then click on Upload this file.



If you want to make changes to your upload. Click on the file. This will bring up a menu with the option to delete. Delete the current file then upload the new file.



The last step is to click on the Next button to move on to your next quiz question.

