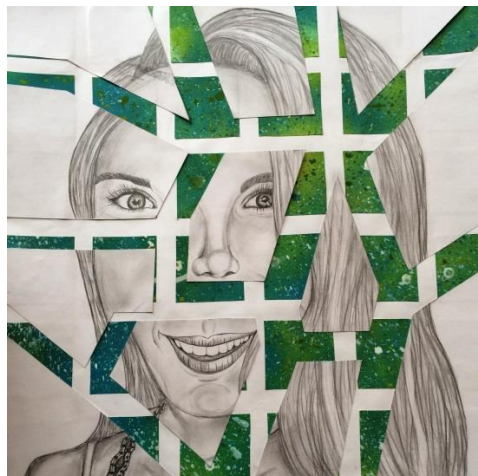


Art 20 - Assignment Booklet #13:

Assignment I: 100 Marks

- Choose **one of** a) or b) or c) to achieve a metamorphosis of your face.
- Use a format no smaller than the size of this page.
 - a) Draw or paint your own portrait and add inanimate characteristics to it. Include objects in the portrait.
 - b) Draw or paint your own face as it is reflected in a metal toaster, faucet tap, glass ornament, puddle or bowl of water. Use foreshortening (see Lesson 9) to show closer areas of the face. Also use a tonal range as shown.
 - c) Draw or paint your own portrait so it fills the format. Include tones in your drawing.
- Cut the portraits into squares.
- Assemble the squares so they form a pleasing composition.
- The completed image should be abstract.
- All artwork should be labelled (on back) with student's full name, course name, Assignment Booklet # and Assignment #.

Assignment I Student Visual Exemplars



Assignment Booklet #13 Assessment Rubric – Assignment I

Evaluation Scale: 5 - Exemplary (demonstrates complete mastery & effort) 4 - Accomplished (demonstrates above average knowledge & effort) 3 - Developing (meets expectations) 2 - Needs Improvement (demonstrates some knowledge - displays inconsistencies) 1 - Beginning (displays little or no knowledge and/or effort)						
EVALUATION CRITERION ASSIGNMENT I	EXEMPLARY	ACCOMPLISHED	DEVELOPING	NEEDS IMPROVEMENT	BEGINNING	EVALUATION COMMENTS
INTERPRETATION & CRITERIA (Completeness/Effort) • How well did the student understand the assignment's objectives? Did the artwork meet the minimum goals/expectations, or go beyond them? How well does the artwork solve the problems outlined in the assignment? Are variations made for a valid reason?	20	16	14	12	10	
COMPOSITION & DESIGN (Organization/Structure) • Are the elements and principles of design/composition applied effectively to elements and materials to affect desired expression of form/subject/content?	20	16	14	12	10	
INVENTIVENESS (Creativity & Originality) • How original, innovative and daring is the artwork? Did the student try to find a new or unique way of working with the subject and/or technique? Did the student try to explore new ideas and creative, unique solutions?	10	8	6	4	2	
VISUAL VOICE (Expressiveness - conveys story, idea, emotion, mood, point of view and tone) • Does the artwork show feeling and expressiveness? Is there the development of imagery, which may evoke a strong or sensitive response to experience, a personal statement or vision, subtlety or depth of feeling?	20	16	14	12	10	
TECHNIQUE (Craft/Conventions) • Is the medium employed inventively to underscore ideas, and demonstrates clear understanding and application of specific medium qualities? Is there evidence of experimentation with techniques and materials, going beyond conventional skills and techniques?	10	8	6	4	2	
VISUAL IMPACT (Overall Pursuit - Presentation & Craftsmanship) • Is there the unique organization of art elements, content, & craft, to create a striking & memorable artwork? Has the entire surface been considered and completed? Has the artwork has been composed neatly and respectfully.	20	16	14	12	10	
Additional Comments:						
Assignment Booklet #13 Total		Total: /100 Marks		%		