

Art 30 – Overview of Marking Criteria

Art 30 Assignment Booklet Keys

March 14, 2007

In most cases the marking criteria are taken from the “Points to Ponder” at the back of each assignment booklet. These points are loose rubrics for the student.

Booklet 1 Making your Mark.

No cartoons for these assignments.

10 pts. Assignment 1: Simple and complex blind contour drawings.

One simple and one complex blind contour drawing of an object.

Criteria:

- Should be from life, no stereotypes or symbols.
- Complexity of object.
- Continuous line.

10 pts. Assignment 2: Gesture drawings.

Two gesture drawings using people or animals.

- From life.
- Does it show movement?
- Geometric shapes not necessary.

40 pts. Assignment 3: Stipple drawing

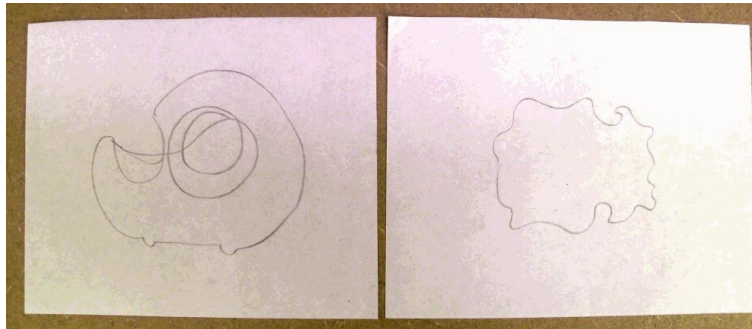
- From life.
- Full composition/effective composition and use of design elements.
- Strong light source/shadows, effective use of value.
- Effort.
- Creativity.
- Drawing pen.

40 pts. Assignment 4: Hatching, Crosshatching, Contour hatching.

- From life.
- Full composition/effective composition and use of design elements.
- Effective use of value.
- Effective use of techniques.
- Can be pencil or pen.
- Effort.
- Creativity.

Booklet #1 Exemplars:

Assignment 1: Simple & Complex Blind Contour Drawings:



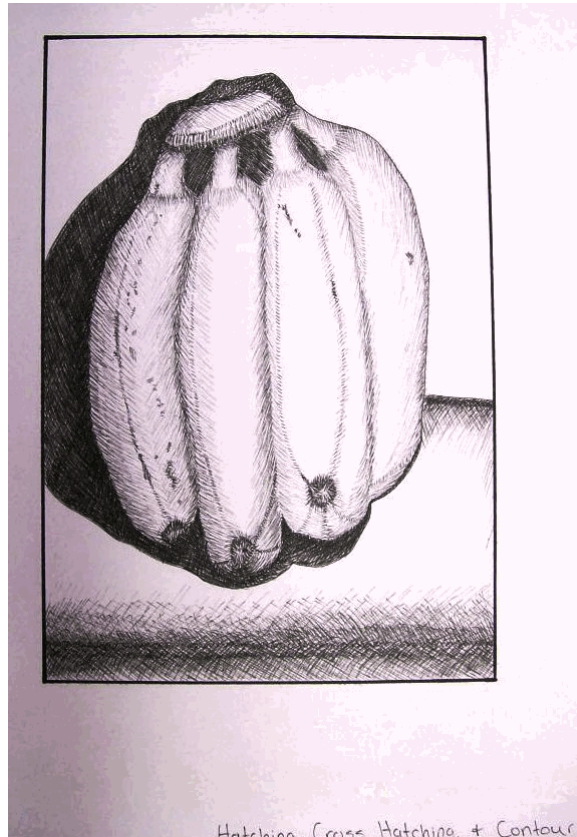
Assignment 2: Gesture Drawing:



Assignment 3: Stipple Drawing:



Assignment 4: Hatching, Crosshatching & Contour Hatching:



Booklet 2 Model Drawings and Monotype Prints

50 pts. Assignment 1. Gray value drawing.

- Did they use gray paper and chalks, charcoal and/or conte?
- Creativity.
- Effort.
- Full composition.
- How effective is use of value and technique?
- Is subject suitable for technique?

45 pts. Assignment 2. Monotype print

- How effective is use of colour?
- Technique used properly?
- How much of the underlying colour shows through?
- Light chalk colours and dark paint.
- Effort.
- Creativity.

5 pts. Assignment 3. Additive or subtractive

Booklet #2 Exemplars:

Assignment 1: Modeled Still-Life Object:



Assignment 2: Monotype Print:



Booklet 3 Expressive Drawings

These three drawings should all have foreground, middle-ground, and background. Larger more complex drawings should receive more marks.

30 pts. Assignment 1: Expressive landscape in ink, using pens and brush.

- From life/no stereotypes.
- Variations in line qualities and line thicknesses.
- Foreground, middle-ground, background.
- Effort.
- Creativity.

30 pts. Assignment 2: Landscape or interior with bamboo or calligraphy pen.

- From life/no stereotypes.
- Line qualities and textures.
- Effort.
- Creativity.

10 pts. Assignment 3. Value strip.

- Did they use ink dilutions?
- Even steps or skips between squares?
- Truly black and white at each end.

30 pts. Assignment 4. Interior or landscape scene with ink washes, pen and ink details.

- Different values of ink washes.
- Effort.
- Creativity.
- From life/no stereotypes.

Booklet #3 Exemplars:

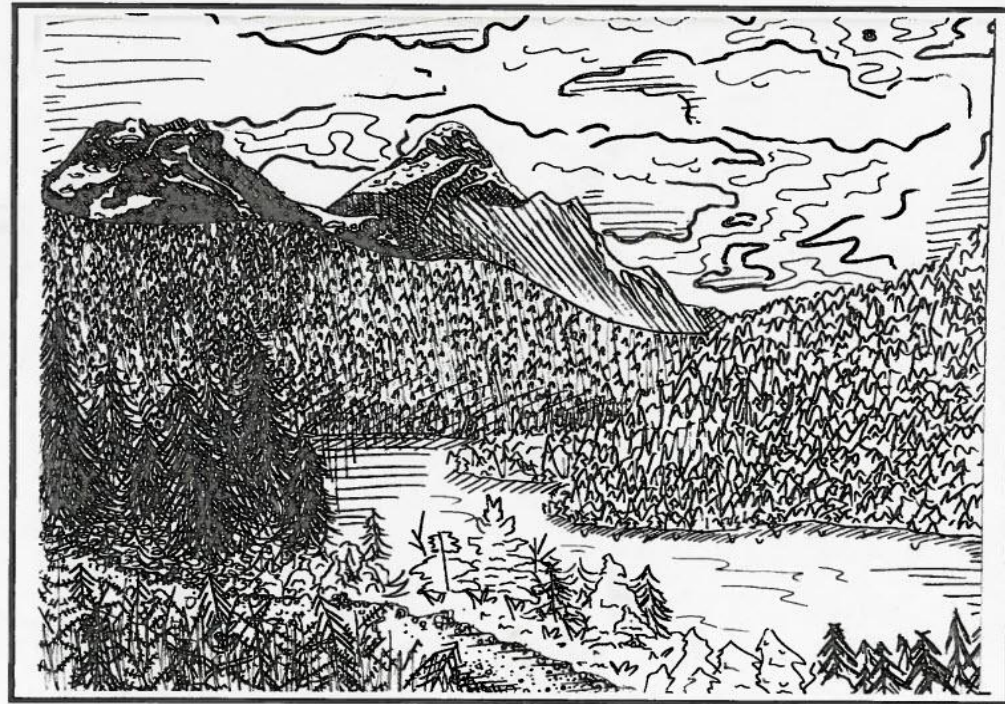
Assignment 1: Expressive landscape in ink:



Assignment 2: Landscape or interior of a house with bamboo or calligraphy pen:



Assignment 4: Scene created with ink washes and pen/ink details:



Booklet 4 Style

25 pts. Assignment 1: Written comparison

Be sure student has chosen a pair of artists from list.

- Each art element discussion (a to j) should be thorough. Each is worth 2.5 pts.
- No research necessary. Student should be able to discuss points from looking at the paintings.

50 pts. Assignment 2. Pastiche. (Directions somewhat unclear. Is being revised.)

- The artwork should be a direct copy.
- Artist and artwork should be identified.
- Quality and accuracy of copy.
- Effort.
- Is medium appropriate for the pastiche?
- If artwork being copied is in colour, then the pastiche should be in colour.

25 pts. Assignment 3. Your style.

- Effort.
- Creativity.
- Use of Elements of Art and Principles of Design.

Booklet #4 Exemplars:

Assignment 2: A Pastiche (imitation of another artistic style):

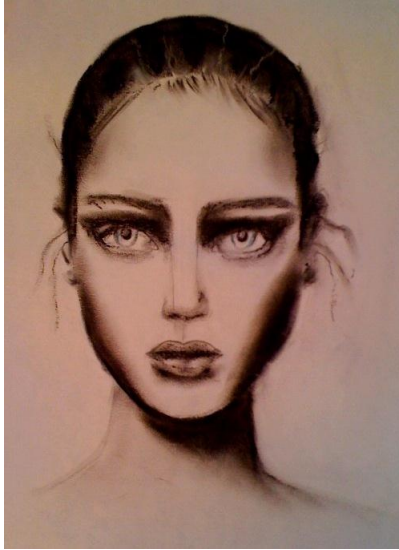


(Leger – “The City”)



(Morrisseau – “Windigo”)

Assignment 3: Drawing in your own style:



Booklet 5 Personal Style

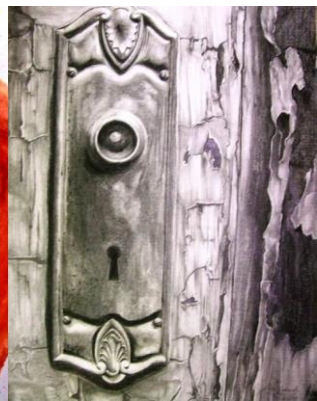
100 pts. Four drawings on One Theme

- Theme needs to be consistent, not too broad.
- How well is theme developed? How deeply explored?
- Use of different media.
- Originality.
- Creativity.
- Effort.
- No smaller than 8.5x11".

Booklet #5 Exemplars:

Assignments 1 to 4: Four drawings on one theme

Alice in Wonderland Theme:



Booklet 6 NW Coast Design

100 pts. Design a NW Coast-style mask.

- Mask not animal.
- Craftsmanship/neatness.
- Black, red, and blue-green in proper proportions.
- No other types of design elements.
- Negative shapes should be as interesting as positive shapes.
- Use of NW Coast design elements.
 - Form line
 - Ovoids
 - U and Split-U forms
 - S forms
 - Where form lines connect there should be circles, T, or Y negative shapes.

Booklet #6 Exemplars:

Assignment 1: Northwest Coast Mask Design:



Booklet 7 Relief Sculpture

100 pts. Clay or mixed media relief sculpture

- Originality.
- Creativity.
- Subject matter/no stereotypes.
- Did they take care in wrapping and sending sculpture or did it come in smithereens? Shows respect for their own work.
- If it is clay is it fired? Otherwise it will probably come in pieces as greenware clay is very fragile.
- Painted. (Sometimes not necessary depending on subject and how it's treated.)
- Textures.
- Elements of Art and Principles of Design.
- Is it truly a relief sculpture or something else?
- Can have other things added as it can be mixed media. If so are the materials appropriate to the artistic statement?
- Effort.
- Photos may be sent but should be in focus, show process.

Booklet #7 Exemplars:

Assignment 1: Relief Sculpture:



Booklet 8 Assemblage Sculpture

80 pts. Assignment 1. Create a 3-D Assemblage Sculpture.

- Craftsmanship.
- Effort.
- Creativity.
- Are materials appropriate to artistic statement?
- Use of Elements of Art and Principles of Design.

20 pts. Assignment 2. Written Response

- Title
- Artistic statement.
- How have materials used contributed to effectiveness of sculpture?
- Insight/perception, ability to discuss one's own work.
- Effort.

Booklet #8 Exemplars:

Assignment 1: 3D Assemblage Sculpture:



Booklet 9 Design and Compositions

100 pts. Interview yourself. Can be in many different formats: written, scrapbook, several drawings with text, Power Point, etc.

- Completeness of topics. If some questions are too personal, such as Spiritual Life, respect student's privacy.
- Thoroughness of discussion of each topic.
- Perception/depth of discussion.
- If visuals are provided what is their quality and the quality of their presentation?

Booklet #9 Exemplars:

Assignment 1: Self-Interview:

NOTE: There are too many varied possibilities to provide an exemplar. However, as a suggestion, utilizing PowerPoint is an effective way to achieve the requirements of this assignment, since each slide can be used to respond to each indicated category, as well as you can include a title page, and easily include photos and images. As a reminder, any images that you use from the Internet need to be cited appropriately.

Booklet 10 Colour

20 pts. Assignment 1. Colour Wheel

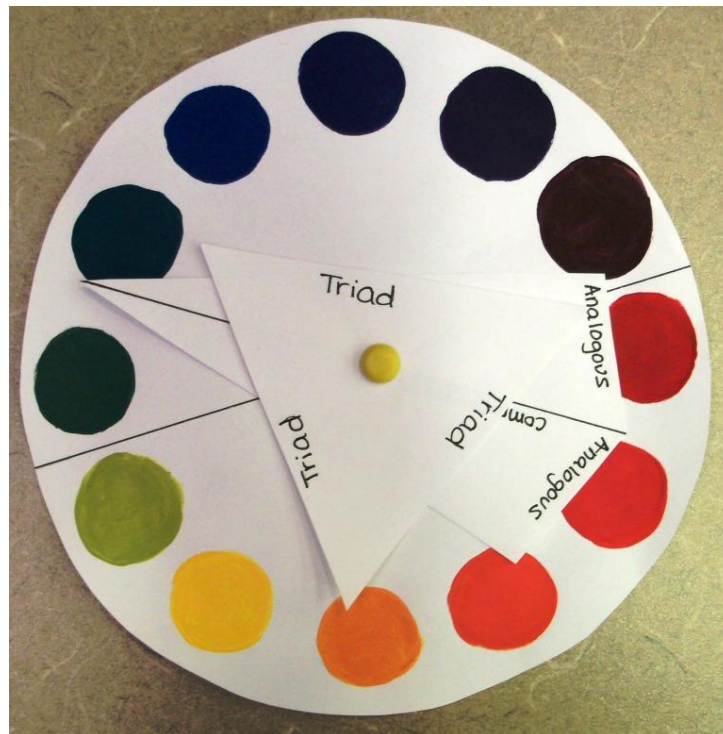
- Craftsmanship.
- Quality of colours mixed.
- Completeness.

80 pts. Assignment 2. Applying Colour Theory

- Proficient Use of limited palette: monochromatic, analogous or complementary colour scheme. No extraneous colours.
- Creativity.
- Effort.
- Skillful use of media.
- Use of Elements of Art and Principles of Design.
- Does colour scheme contribute to artistic statement.
- Explanation/written statement. ~5 pts.

Booklet #10 Exemplars:

Assignment 1: Colour Wheel:



Assignment 2: Colour Theory Painting



Complementary Colour Scheme



Complementary Colour Scheme – Blue & Orange



Analogous Colour Scheme – “Analogous colors are colors that neighbor each other on the color wheel. For this study, I chose to use blue and its entire range from blue, blue violet, red violet, and red and tints of these. I used a dash of orange for the rope, which causes a ton of interest because it is a compliment to blue. I found out that analogous colors can sometimes give artwork a lack of interest or create a calming feeling. Sounds kind of boring! So, that is why I put that bold orange rope in this piece and also the boat was going to float away if I didn't tie it down!”

Booklet 11 Image Making

90 pts. Assignment 1. Triadic or Split Complementary Colour Scheme

- Should portray emotion or mood. Colour should be used in this regard.
- Proficient Use of limited palette: triadic or split complementary colour scheme. No extraneous colours.
- Creativity.
- Effort.
- Skillful use of media.
- Use of Elements of Art and Principles of Design.

10 pts. Assignment 2. Symbolic Use of Colour

- Perception and depth of understanding about colour choices for their particular artwork.

Booklet #11 Exemplars:

Assignment 1: Triadic or Split Complementary Scheme Painting



Split Complementary Scheme Painting



Triadic Scheme Painting – “This color study is a Triadic color scheme that is based on three colors that are evenly spaced on the color wheel, namely orange, purple and green.”

Booklet 12 Watercolour Techniques

20 pts. Assignment 1. Watercolour techniques

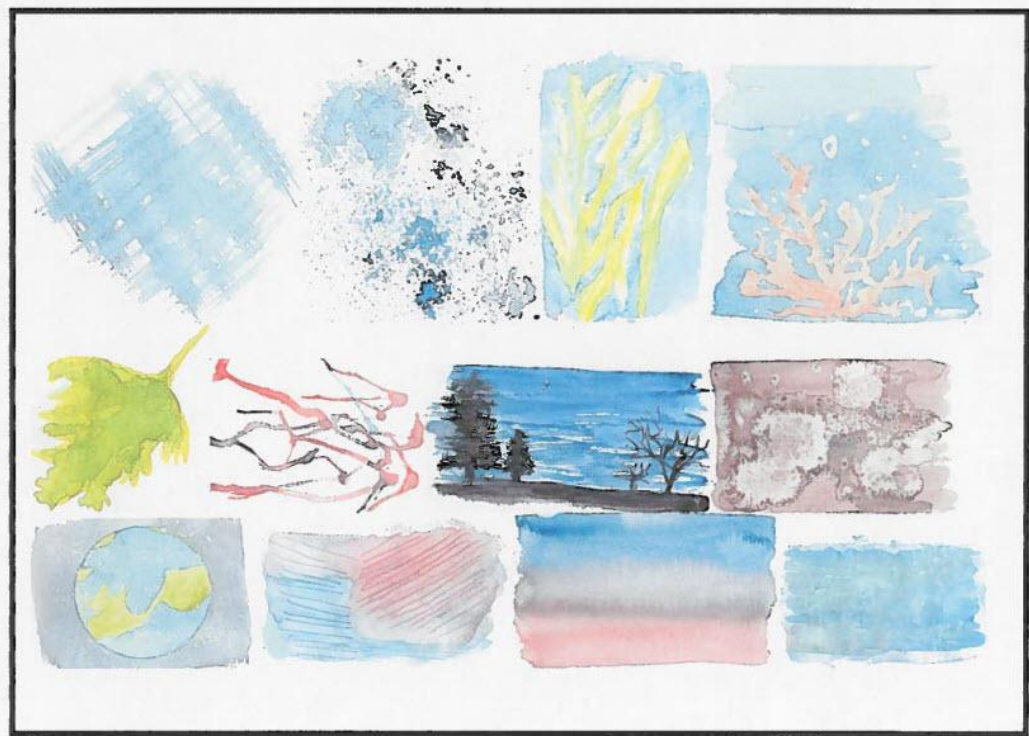
- Effort.
- Use of colour. Simple/complex. Colour blending on paper rather than all premixed is best.
- Depth/Level of experimentation with techniques.

80 pts. Assignment 2. Nature study in watercolour

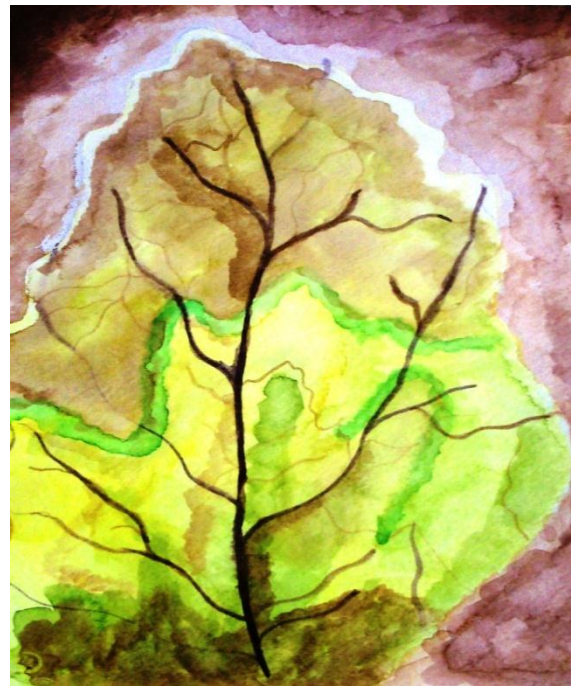
- Use of wet-into-wet technique.
- Use of glazing.
- Use of dry brush.
- Edge softening.
- Any additional techniques are above and beyond.
- Full composition.
- From life/no stereotypes.

Booklet #12 Exemplars:

Assignment 1: 10 Watercolour Techniques



Assignment 2: Watercolour Painting from Nature:



Booklet 13 Watercolour Landscape

25 pts. Assignment 1. Four thumbnail sketches.

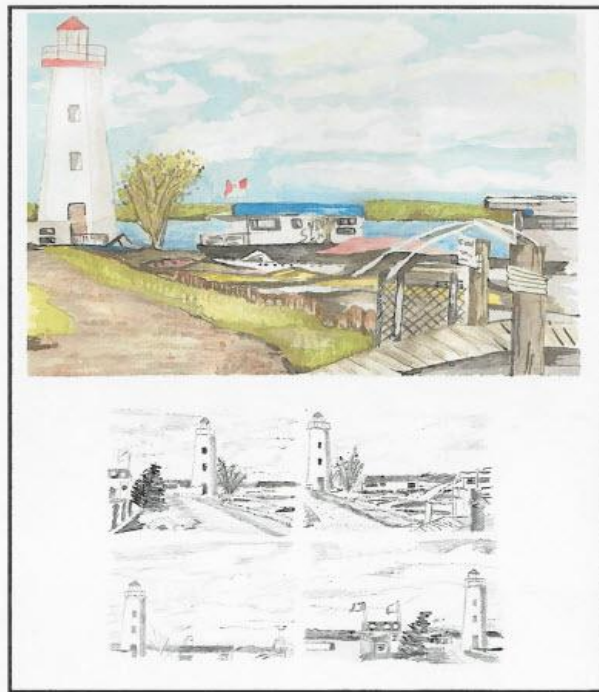
- Use of value to develop a centre of interest.
- Effort.
- Creativity.
- From life/no stereotypes.

75 pts. Watercolour landscape.

- Use of watercolour techniques from previous lesson. Variety.
- Use of Elements of Art and Principles of Design.
- Use of space. Foreground, middle-ground, background.
- Use of expressive line with watercolour brush when detailing.
- No pigment lifting from overworking or working when previous layer is still wet.
- Development of Centre of Interest at a Golden Section point.
- Use of a variety of browns, greens, blues rather than just one flat colour.
- Development of details and contrast in foreground.
- Softened edges, especially in background.
- Use of graded wash for sky.

Booklet #13 Exemplars:

Assignment 1 & 2: 4 Thumbnail sketches & Watercolour Landscape



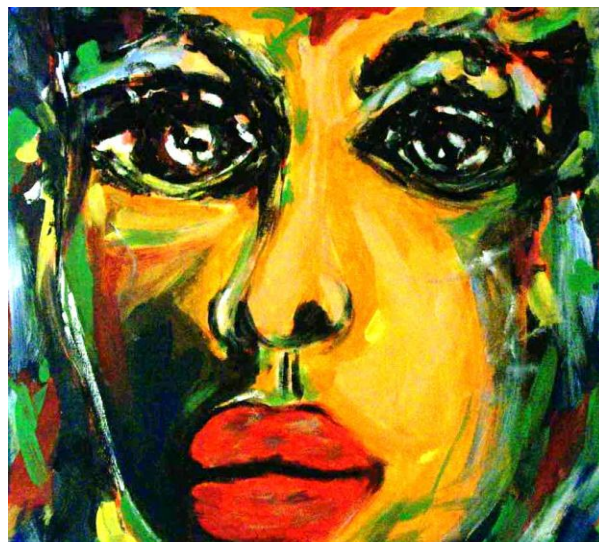
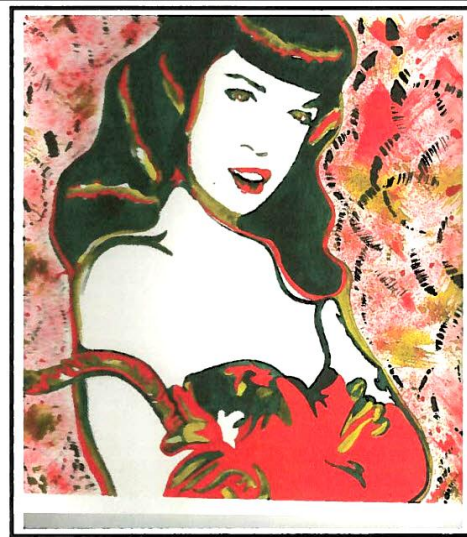
Booklet 14 Development of European Art

100 pts. Assignment: a painting in the Fauvist style.

- Subject should be a still life.
- Are colours naturalistic, Fauvist, or something else?
- Use of colour schemes from previous lessons: complementary, split complementary, triadic, analogous.
- Craftsmanship.
- Use of Elements of Art and Principles of Design.
- No smaller than 18x24".
- Creativity.
- Complexity.
- Effort.
- At least one wet medium if mixed media.

Booklet #14 Exemplars:

Assignment 1: A Painting in the Fauvist Style



Booklet 15 20th Century Art

30pts. Assignment 1: Art Styles

Each of these items is worth about four points.

- A. Balla: Cubism
- B. Magritte: Surrealism
- C. Oldenburg: Pop Art
- D. Kokoschka: Expressionism
- E. Kandinsky: Abstract Expressionism
- F. Rothko: Colour Field
- G. Pratt: Photo Realism
- H. Colville: Social Realism

70 pts. Create an artwork in your own style.

- Originality.
 - Creativity.
 - Effort.
 - Use of Elements of Art and Principles of Design.
 - Paragraph
-
- Where student's work fits into Art History spectrum, (can have several influences).
 - How masters have influenced this student. What style characteristics could they incorporate into their own works?
 - How they could improve their work.
 - Thoroughness of discussion.

Booklet #15 Exemplars:

Assignments 1 & 2: Since both assignments are written submissions, there are no visual exemplars needed.

Booklet 16 Your Life as a Daily Event

100 pts. Assignment: Present a view of your life as a "daily event."

- Originality.
- Creativity.
- Choice of media as appropriate to artistic statement being made in artwork.
- Effort.
- Use of everyday objects.
- Any symbolism?
- Use of colour harmonies from previous lessons.
- Use of Art Elements and Principles of Design.

Booklet #16 Exemplars:

Assignment 1: Present a View of your Life as a "Daily Event"



Booklet 17 Four Step Art Analysis Process

70 pts. Feldman's Art Analysis

- Has student provided the artwork from lesson 15 or a photo of it? If not, refer to notes about that artwork in STAR. Ideally you will be marking both lessons.
- Has student chosen one of the works provided in the list to write their comparison?
- Student should write this as a report in point form on separate paper, not just fill in under the headings in the lesson booklet.
- Thoroughness of discussion of points.
- A. 1-14 2pts. each. (Comes to about 30 pts.)
- B. 15 pts.
- C. 15 pts.
- D. 10 pts.
- Look for perception, understanding, thoroughness, openness to go beyond initial personal opinion.

30 pts. Choose an artwork that you don't like. Discuss.

- Intelligent discussion about good qualities artwork has even though they don't like it.
- Questions: Student should know the difference between objective and subjective. Objective questions should deal with Elements of Art and Principles of Design. Subjective questions can deal more with opinion and preferences. AWW

Booklet #17 Exemplars:

Assignments 1 & 2: Since both assignments are written submissions, there are no visual exemplars needed.

Booklet 18 Artistic Integrity

20 pts. Assignment 1: Reflective Essay on Artistic Goals

- Artists they admire.
- Issues they would like to explore through art.
- Perception:
 - Discussion on how they could improve and grow as an artist.
 - Strengths.
 - Preferred media.
 - Understanding of how they use Elements of Art and Principles of Design.

80 pts. Assignment 2: Exhibition or Portfolio Presentation

For both exhibition and portfolio:

- Mounted or matted work.
- Labeling of work with name, title, media, date.
- If photographs are submitted they need to be in focus and show process and groupings of show.
- Evidence of work divided up into groupings.
- All previous work from course needs to be in portfolio or exhibition.
- At least three completed Questionnaires.
- Extra work besides course requirements can be given extra marks.

Portfolio

- Table of contents.
- Portfolio should be in groupings that are also chronologically arranged so as to show growth.
- Dividers between sections of portfolio.
- Reflective writing.
- Portfolio needs to be sturdy case of some kind.

Exhibition

- Choice of venue should be appropriate, not just someone's home.

Booklet #18 Exemplars:

Assignment 1: Since this assignment is a written submission, there are no visual exemplars needed.

Assignment 2: Exhibition or Portfolio Presentation

NOTE: There are too many varied possibilities to provide an exemplar.

Review the assignment suggestions for the many possible ways you can complete either the exhibition or portfolio presentation of your Art 30 work.

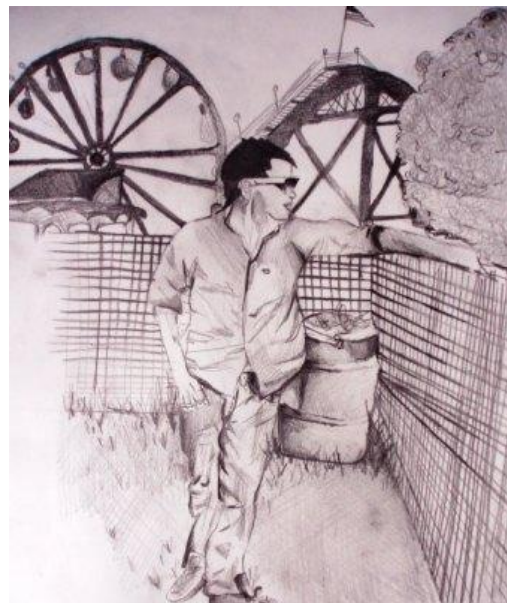
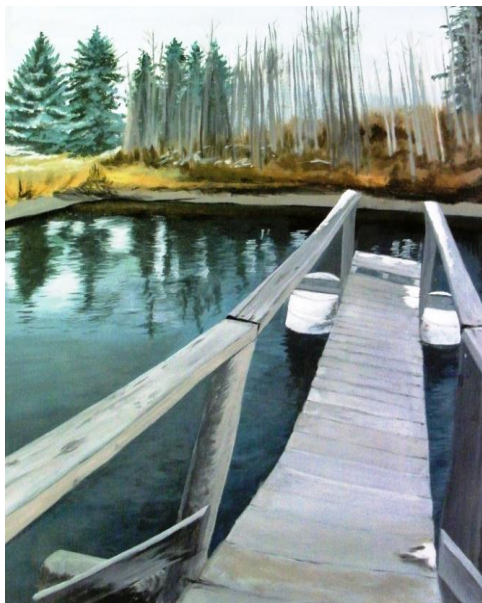
Booklet 19 Canadian Art in the 20th Century.

Assignment: Create an art work showing the spirit of where you live.

- At least 18x24" unless created on computer.
- Can be any medium or mixed media.
- Effort.
- Creativity.
- Use of Elements of Art and Principles of Design.
- Originality.

Booklet #19 Exemplars:

Assignment 1: Create an Artwork that shows the "Spirit of Where you Live"



Booklet 20 Social and Political Influences

20 pts. Assignment 1: Written response: political, social or local issue.

- Discussion should include:
 - Art elements and design principles, how they are used to explore issue/message in the artwork.
 - What the message is.
 - How artist's style contributes to message.
 - How medium contributes to message.

80 pts. Assignment 2: Symbolic self portrait.

- Can be any medium or mixed media.
 - Use of symbolism.
 - Use of colour symbolism.
 - Use of Art Elements and Design Principles.
 - Originality.
 - Effort.
 - Creativity.
 - Student should shine in this assignment and use ideas from the course.
- Summative assignment.

Booklet #20 Exemplars:

Assignment 1: Since this assignment is a written submission, there are no visual exemplars needed.

Assignment 2: Self-Portrait that contains Symbolic Imagery, which represents different aspects of your life.

