

ALBERTA DISTANCE LEARNING CENTRE
FNA3400: ART 30
EXPRESSIVE DRAWING
Assignment Booklet 3

Student's Questions and Comments

FOR STUDENT USE ONLY
<p>(if label is missing or incorrect)</p> <p>File Number:</p> <p>_____</p>

Apply Assignment Label Here

Name	Address	City/Town	Province	Postal Code

Please use the pre-printed label for this course and Assignment Booklet.

FOR ADLC USE ONLY
<p>Assigned to</p> <p>_____</p> <p>Marked by</p> <p>_____</p> <p>Mark _____ %</p> <p>Date received</p> <p>_____</p>

SUMMARY

	Possible Marks	Your Marks
Assignment 1	30	
Assignment 2	30	
Assignment 3	10	
Assignment 4	30	
TOTAL	100	

<p>Teacher's Comments:</p>	<p>_____</p> <p style="text-align: center;">Teacher's Signature</p>
-----------------------------------	--

CANADIAN CATALOGUING IN PUBLICATION DATA

Art 30

Art 30 - Lesson 3: Expressive Drawing

Assignment Booklet 3

Alberta Distance Learning Centre

ISBN 1-894989-36-8

Copyright 2018 Alberta Distance Learning Centre

4601 - 63 Avenue

Barrhead, Alberta Canada T7N 1P4

All rights reserved. No part of this courseware may be reproduced, stored in a retrieval system, or transmitted in any form or by any means – electronic, mechanical, photocopying, recording, or otherwise – without written permission from Alberta Distance Learning Centre.

Printed in Canada

Alberta Distance Learning Centre has made every effort to acknowledge original sources and to comply with copyright law. If errors or omissions are noted, please contact Alberta Distance Learning Centre so that necessary amendments can be made.

For Users of Alberta Distance Learning Centre Courseware

Much time and effort involved in preparing learning materials and activities that meet curricular expectations as determined by Alberta Education. We ask that you respect our work by honouring copyright regulations.

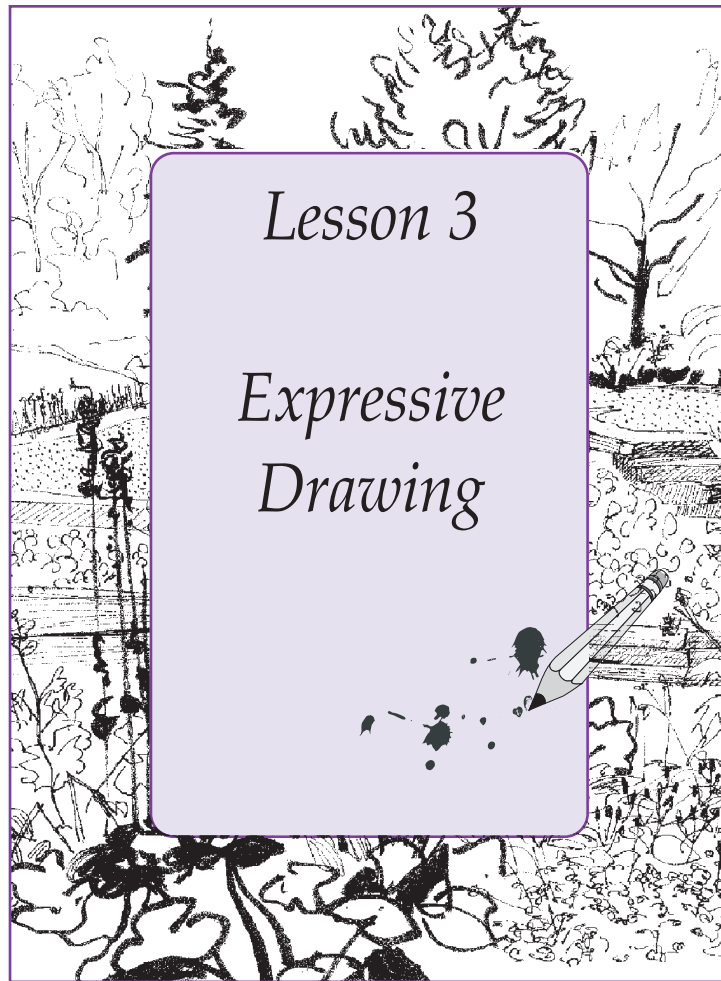


Alberta Distance Learning Centre website:

<http://www.adlc.ca>

The Internet can be a valuable source of information. However, because publishing to the Internet is neither controlled nor censored, some content may be inaccurate or inappropriate. Students are encouraged to evaluate websites for validity and to consult multiple sources.

ART 30



ASSIGNMENT BOOKLET 3

Instructions for Submitting Assignment Booklets

1. Submit Assignment Booklets regularly and only one Assignment Booklet at one time. This allows your teacher to provide comments you can apply to subsequent work.
2. Check the following before submitting each Assignment Booklet:
 - Are all assignments complete?
 - Have you edited your work to ensure accuracy of information and details?
 - Have you proofread your work to ensure correct grammar, spelling, and punctuation?
 - Did you complete the Assignment Booklet cover and attach the correct label?

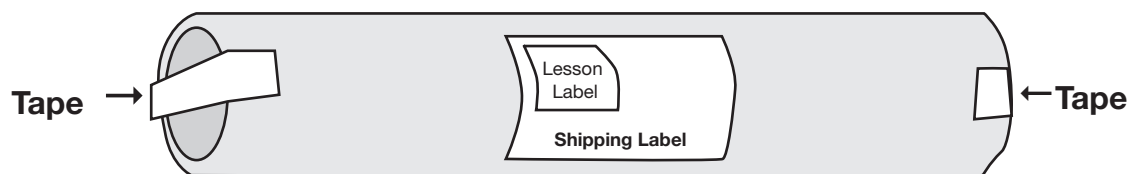
Preparing the Assignment Booklet

Ensure that the lesson number on the label is the number on the Assignment Booklet. Peel the corresponding preprinted label for the Assignment Booklet from the backing and apply it to the appropriate space on the cover page.

- Never use tape or staples to attach the label to the Assignment Booklet.
- Do not put the preprinted label on the outside of the mailing envelope.

Preparing the Mailing Envelope or Mailing Tube

- The mailing envelopes provided are pre-addressed to ADLC. Attach your return address.
- Some courses provide mailing tubes. Roll your assignment(s) and Assignment Booklet and insert them into a mailing tube. Seal the tube and apply the correct label to a shipping label provided. Affix the shipping label to the outside of the tube. When your submission is returned, you can re-use the mailing tube for subsequent lessons.



Mailing Tube

© ADLC

Submitting to an ADLC Campus

If you reside near an ADLC office (Barrhead, Edmonton, Calgary, or Lethbridge), you may drop your submissions directly at the office.

Using Postal Mail

Determine sufficient postage by having the envelope or tube weighed at a post office. (Envelopes less than two centimetres thick receive the most economical rate.)

Art 30

Assignment Booklet 3

Advice

Your success on the assignment in this booklet determines your mark for this module. Your responses give your teacher an indication of your understanding of the course.

- Before attempting to answer the assigned questions, please read all the relevant course material carefully and completed the self-correcting activities in the module booklet.
- Proceed slowly and carefully through the assignments.
- If you encounter difficulties, review the pertinent section notes.
- If you are still having problems, please contact the course teacher at the Alberta Distance Learning Centre for assistance.
- The marks possible for each individual exercise are indicated.
- May you enjoy success in your studies!

Warning

- Failure to complete all questions and/or poor responses due to obvious lack of effort may result in your teacher returning the assignment booklet marked “incomplete”. No grading will be awarded until such exercises are completed to the teacher’s satisfaction.
- You are encouraged to discuss the various aspects of the course with others, but all work submitted should be your own.
- If there is a large discrepancy between the assignment score and the final exam score, the teacher has the discretion to assign a final mark based solely on the examination results.

Our Pledge to You

Everyone at the Alberta Distance Learning Centre is committed to helping you achieve your educational goals. We happily assist students who are sincere in their desire to learn. You may reach us by phone, fax, e-mail, voice mail, postal mail, or at an Alberta Distance Learning Centre office.

We want to help you achieve and enjoy success.

Format

You are encouraged to **use a word processor** for your written work.

- Format your work using an easy-to-read 12-point serif font such as Times New Roman.
- Include your full name and student file number as a document header.
- Double-space your final copy.
- Staple your printed work to this Assignment Booklet.

Avoid plagiarism by acknowledging all sources you use. Contact your teacher if you are uncertain how to document sources.

Although you are encouraged to work collaboratively and discuss various aspects of this course with others, **all submitted work must be your own.**

Our Pledge to Students

Alberta Distance Learning Centre is committed to helping students achieve their educational goals. We look forward to assisting students who are sincere in their desire to learn. Students may contact their course teacher(s) by phone, e-mail, fax, postal mail, or in person at an Alberta Distance Learning Centre office.

Barrhead

4601 - 63 Avenue

Barrhead, Alberta T7N 1P4

Phone 780-674-5333

Toll-free 1-866-774-5333

Fax 1-866-674-6977

C₃ LESSON THREE

Note: Assignments 1 – 4 should be no smaller than 8 1/2”x11”.

**Value
30**

Assignment 1: Use pens and brush to draw an expressive landscape in ink.

Use a real landscape. If it is too cold to go outside to sketch, draw the scene you see from one of your windows.

**Value
30**

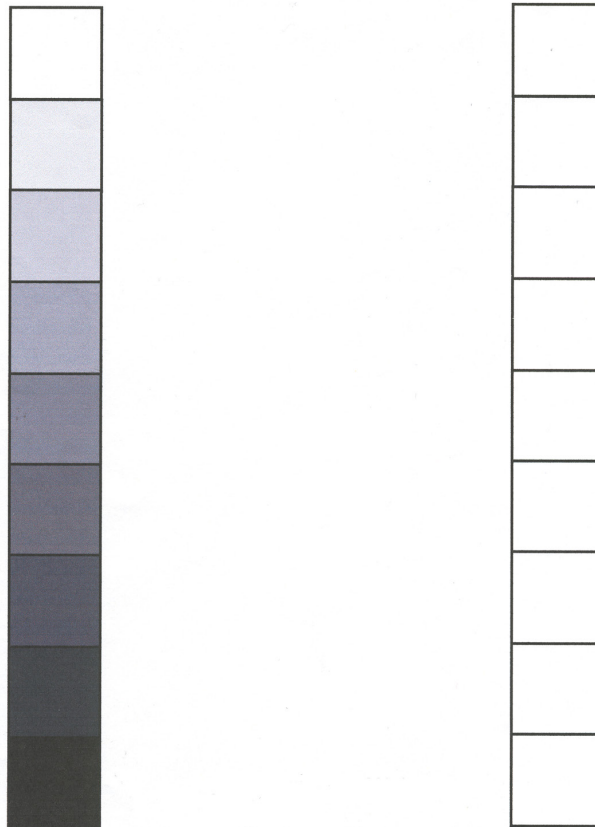
Assignment 2: Use bamboo or calligraphy pen to draw a landscape or interior of a house.

Vary textures and values.

**Value
10**

Assignment 3: Use the strip provided to make a value strip of your own using progressively more drops of ink into dilution.

There should be nine steps from white to black.



**Value
30****Assignment 4: Use ink washes and pen and ink details to draw a scene (landscape or interior).**

Use a brush to draw a picture (landscapes or interiors are always good subject matter) with the different strengths of ink washes. When your ink painting is done, let it dry. Then go into the drawing again with a pen to enliven it with structure and details.

Points to Ponder

1. How many different textures and qualities have I created in my expressive landscape?
2. Have I drawn from life or used old stereotypes?
3. Have I used a real calligraphy pen or a felt pen?
4. How many types of textures and qualities have I created in my calligraphy pen drawing?
5. Have I inked nine squares with values from black to white in an even sequence, with no jumps in value between any two boxes?
6. How many different shades have I used in my ink wash drawing?
7. How much effort did I put into my assignments?

Reminder: Visit <http://artdesignstudies.weebly.com/art-30.html> to view student visual exemplars for each Art 30 lesson (just scroll down past the Picassohead submissions), which may inspire and assist you with your assignments.

Mailing Instructions

Send Assignments 1, 2, 3, and 4 in a lesson envelope with the labelled Assignment Booklet, or submit your submission via the Online Submission Instructions (see specifically the Art 30 instructions).

End of Lesson 3 Assignment

ADLC

Alberta Distance
Learning Centre

adlc.ca
1-866-774-5333
info@adlc.ca

Alberta Distance Learning Centre
Box 4000 4601 – 63 Avenue
Barrhead, Alberta T7N 1P4

Revised April 2018