



ALBERTA
DISTANCE
LEARNING
CENTRE

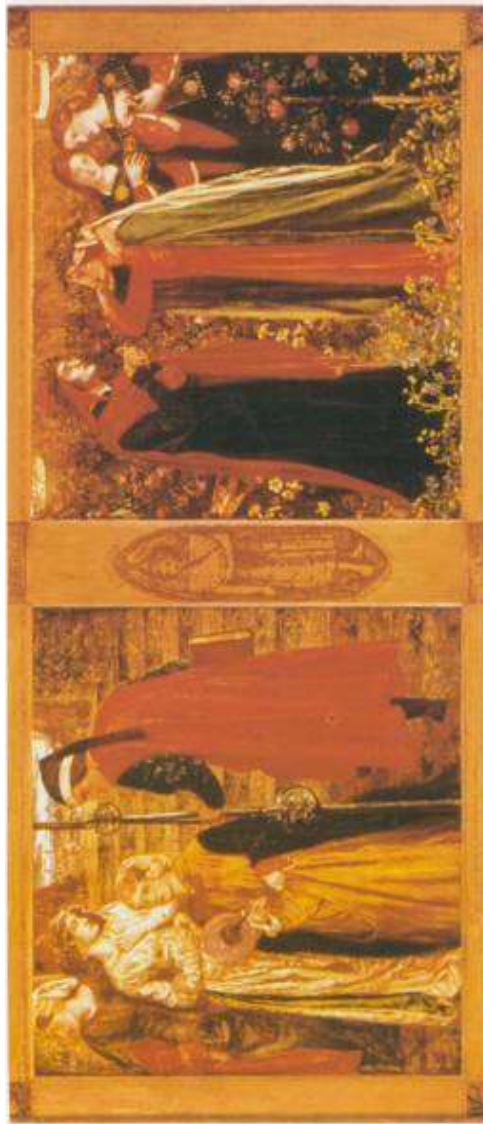
Art 30 Booklet of Reproductions



Art 30 – Booklet of Reproductions

NOTE: Since the **Booklet of Reproductions** that is referred to in your course material is no longer in print, please use this .pdf document to locate the corresponding image indicated in your course material. The numbers in this document correspond to the images indicated in your course material.

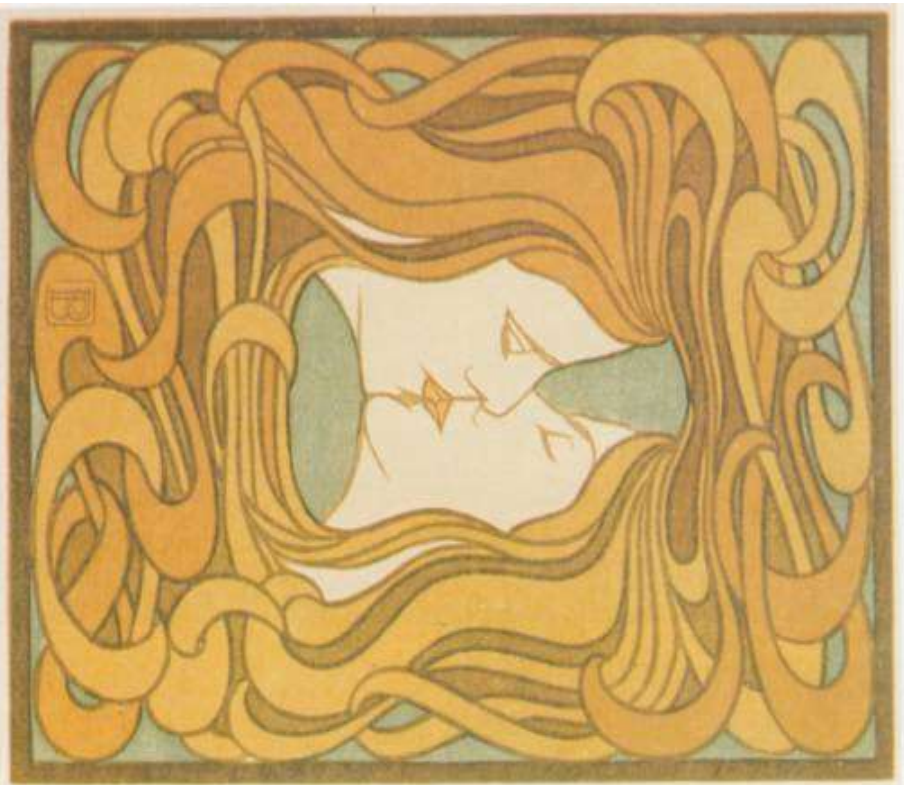




1. Dante Gabriel Rossetti, 1828-82, Great Britain. *The Salutation of Beatrice*. Oil – two panels, 74.9 x 80.0 cm. National Gallery of Canada, Ottawa. Sightlines 12329.

2. Right. Hokusai, 1760-1849, Japan. *A Portrait of an Actor, Ichikawa Ehizo in the Role of a Brigand*, 1791. Print.





3. Peter Behrens, 1868-1940, Germany. *The Kiss*, c 1896. Coloured woodcut, 10" x 8". The Museum of Modern Art, New York. Sightinglines 10774.



4. Emile Gallé, 1846-1904, France. *Group of Vases*, c 1900. Glass. Collection various European Museums. Sightinglines 8210.



5. Jacques-Louis David, 1748-1825, France. *Oath of the Horatii*, 1784. The Louvre, Paris. ART Resource, N.Y. Sightinglines 2489.



■ 6. Edouard Manet, 1832-1883, France. *The Absinthe Drinker*, 1859. Oil, 70" x 40 1/2". Ny Carlsberg Glyptotek, Copenhagen, Denmark. Museum Photo.



■ 7. Mary Cassatt, 1845-1926, U.S.A. *The Bath*, c 1891. Oil on canvas, 39 1/2" x 26". The Art Institute of Chicago (Robert A. Waller Fund). © Cassatt 1990 VIS*ART Copyright Inc. Sighlines 11052.



■ 8. Vincent van Gogh, 1853-90, Netherlands, *Iris*, c 1890. Oil on canvas, 73.7 x 93.1 cm. The Metropolitan Museum of Art, New York. Gift of Adele R. Levy, 1958. *Signiflines* 9225.



■ 10. René Lalique, France, *Handmirror, Necklace, Two Brooches*. Various European Collections. *Signiflines* 8238.



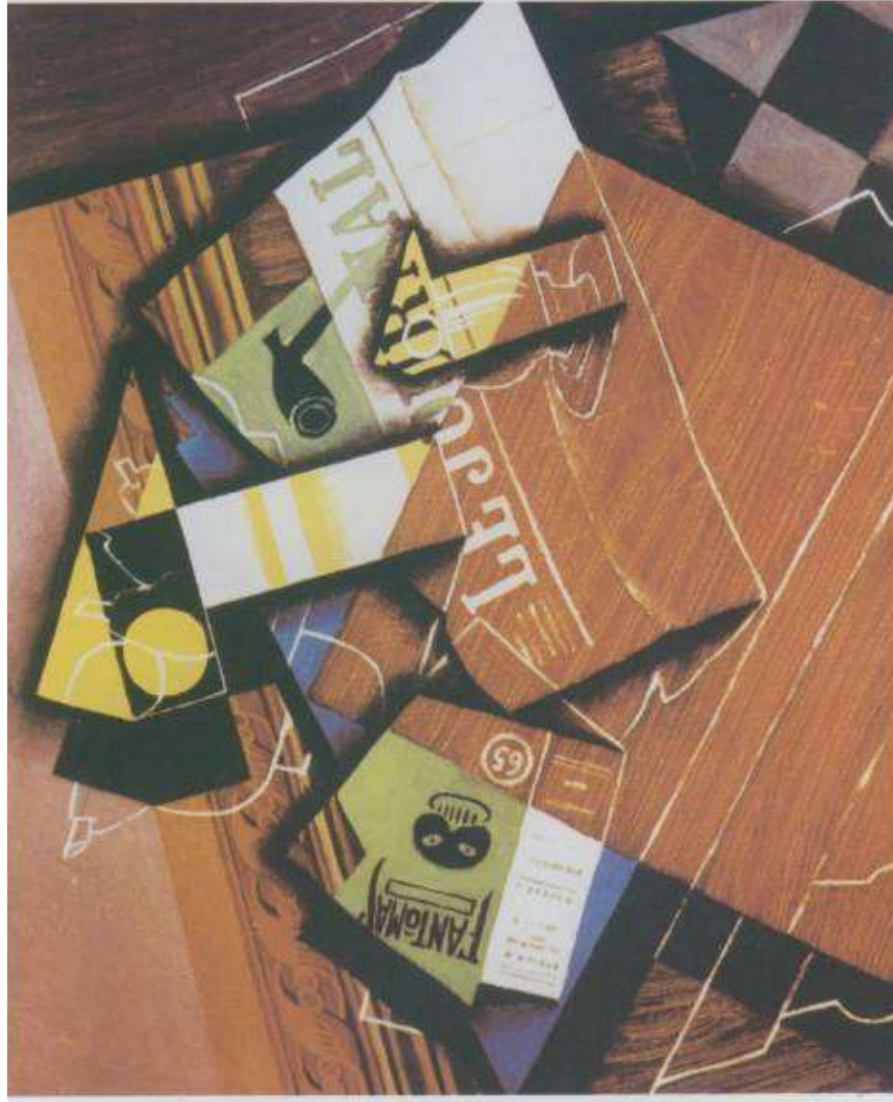
■ 9. Lower left, Hokusai, 1760-1849, Japan, *Iris*, early nineteenth century.

■ 11. Lower right, Pablo Picasso, 1881-1973, Spain, *Les Femmes d'Alger*, 1907, 8' x 7'8". The Museum of Modern Art, New York. Acquired through the Lillie P. Bliss Bequest. © Picasso 1991 VIS-ART Copyright Inc. *Signiflines* 11371.





■ 12. Pablo Picasso, 1881-1973, Spain. *Ma Jolie*, 1911. Oil on canvas 39 1/2" x 25 3/4". The Museum of Modern Art, New York. © Picasso 1991 VIS'ART Copyright Inc. Sightlines 11367.



■ 13. Juan Gris, 1887-1927, Spain. *Still Life (Fantomas)*, 1915. Oil on canvas 23 1/2" x 28 1/4". National Gallery of Art, Washington D.C. Chester Dale Fund.



■ 14. Pablo Picasso, 1881-1973, Spain. *Still Life with Chair Caning*, 1912. Collage, 10 1/2" x 13 3/4". Musée Picasso, Paris (photo Giraudon) © Picasso 1991 VIS*ART Copyright Inc.



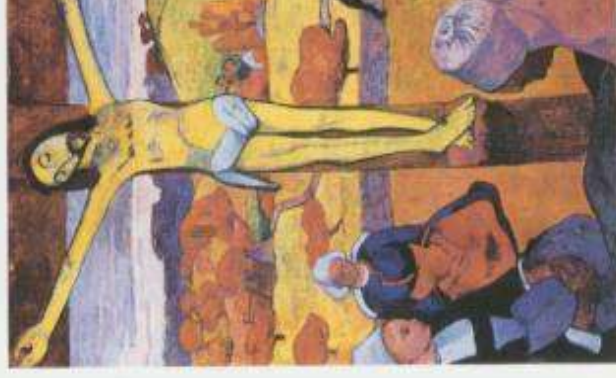
■ 15. Marcel Duchamp, 1887-1968, U.S.A. *Nude Descending a Staircase, No. 2*, 1912. Oil on canvas, 58" x 35". The Philadelphia Museum of Art, Louise and Walter Arensberg Collection. © Duchamp 1991 VIS*ART Copyright, Inc.

■ 16. Flight, Georges Braque, 1882-1963, France. *Le Guerdon*, 1921-2. Oil on canvas 75" x 27 3/4". The Metropolitan Museum of Art, New York. Gift of Mrs. Bertram Smith. © Braque 1991 VIS*ART Copyright Inc.



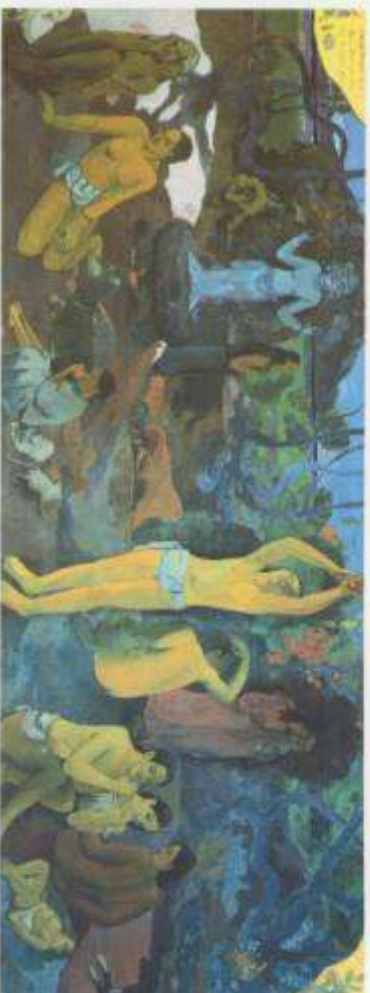


- 17. Upper left. Lyonel Feininger, 1871-1956, U.S.A. Harbor Mole, 1913. 31 3/4" x 39 3/4". Collection, Mr. and Mrs. John Drew, Pittsburgh. © Feininger 1991 VIS*ART Copyright Inc.
- 18. Upper right. Joseph Stella, 1880-1946, U.S.A. Brooklyn Bridge, 1917-18. 84" x 76". Yale University Art Gallery, New Haven, Connecticut. Gift of the Société Anonyme. © Stella 1991 VIS*ART Copyright Inc. Sightlines 11459.
- 19. Lower left. Amedeo Modigliani, 1884-1920, Italy. Anna Zborowska, 1917. Oil on canvas, 51 1/4" x 32". The Museum of Modern Art, New York. Lillie P. Bliss Collection. Sightlines 11325.
- 20. Lower right. Paul Gauguin, 1848-1903, France. The Yellow Christ, 1889. Oil on canvas, 36 3/8" x 28 3/4". The Albright-Knox Art Gallery, Buffalo, New York.





■ Paul Gauguin, 1848-1903, France. *Pastorales Tahitiennes*, 1893. Invas, 34 2/3" x 45 1/5". Leningrad, Hermitage.



■ 22. Paul Gauguin, 1848-1903, France. *Where Do We Come From? What Are We? Where Are We Going? (D'où venons-nous? Que sommes-nous? Où allons-nous?)*. Oil on canvas, 139.1 x 374.6 cm. Tompkins Collection.



■ 23. Paul Gauguin, 1848-1903, France. *Tahitian Women*. Canvas, 69 x 90 cm. Museum of Impressionism, Paris. ART Resource, N.Y. Sightlines 4127.



■ 24. Paul Gauguin, 1848-1903, France. *The Day of the God (Mahana No Atia)*, 1894. Oil on canvas, 68.3 x 91.5 cm. The Art Institute of Chicago. Helen Birch Bartlett Memorial Collection. © 1990 The Art Institute of Chicago. All Rights Reserved.



- 25. Upper left. Paul Gauguin, 1848-1903, France. *Women at the River*, 1891. Woodcut on endgrain boxwood, printed in colour, with the help of stencils, block: 8 1/16" x 14" (20.5 x 35.5 cm). Collection, The Museum of Modern Art, New York. Gift of Abby Aldrich Rockefeller. Sightlines 8823.
- 26. Upper right. Paul Gauguin, 1848-1903, France. *Haymaking in Brittany*. Museum of Impressionism, Paris, France. ART Resource, N.Y. Sightlines 2694.
- 27. Lower right. Paul Gauguin, 1848-1903, France. *Tahitian Landscape*, c. 1894. Monotype heightened with watercolour on woven paper, 21.0 x 28.5 cm. Private collection, Toronto. Art Gallery of Ontario. Sightlines 12119.

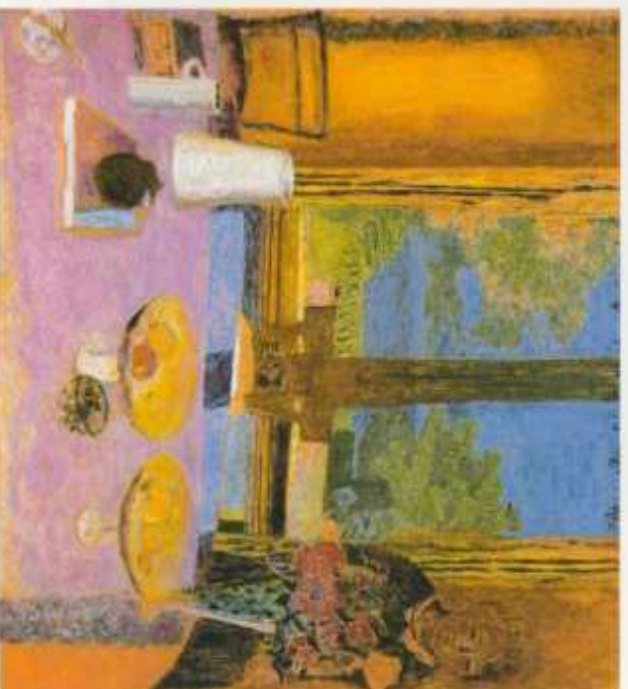




■ 28. Above: Pierre Bonnard, 1887-1947, France. *The Breakfast Room*, c 1930-31. Oil on canvas, 63" x 44". Museum of Modern Art, New York. © Bonnard 1991 VIS*ART Copyright Inc. *Sightlines* 9042.

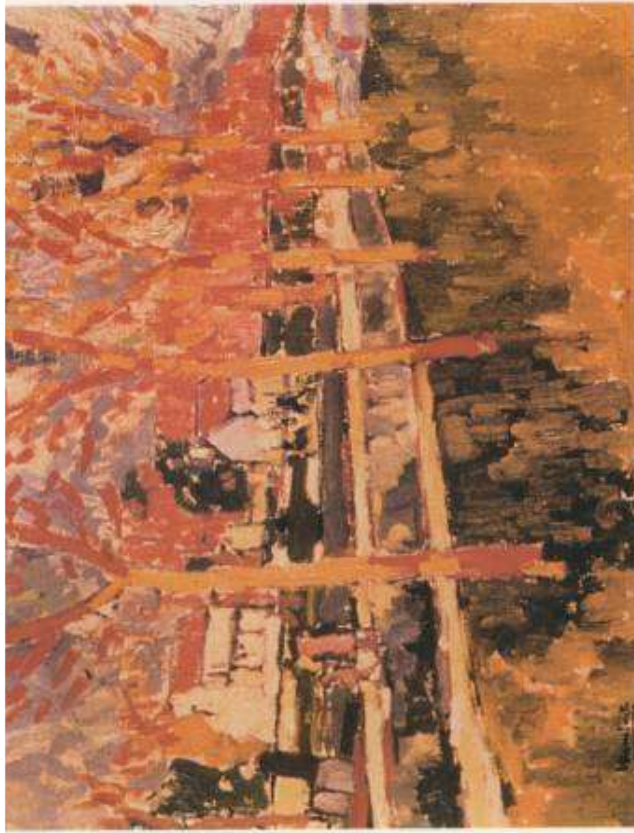
■ 29. Upper right: Edouard Vuillard, 1867-1940, France. *Self-Portrait*, 1892. Oil on board, 14" x 11". Collection Mr. and Mrs. Sidney F. Brody, Los Angeles.

■ 30. Lower right: Pierre Bonnard, 1887-1947, France. *Dining Room on the Garden*, 1934-35. Oil on canvas 50" x 53 1/4" (126.8 x 135.3 cm). Solomon R. Guggenheim Museum, New York. Gift, Solomon R. Guggenheim, 1938 Photograph by Carmelo Guadagno © Bonnard 1991 VIS*ART Copyright Inc.





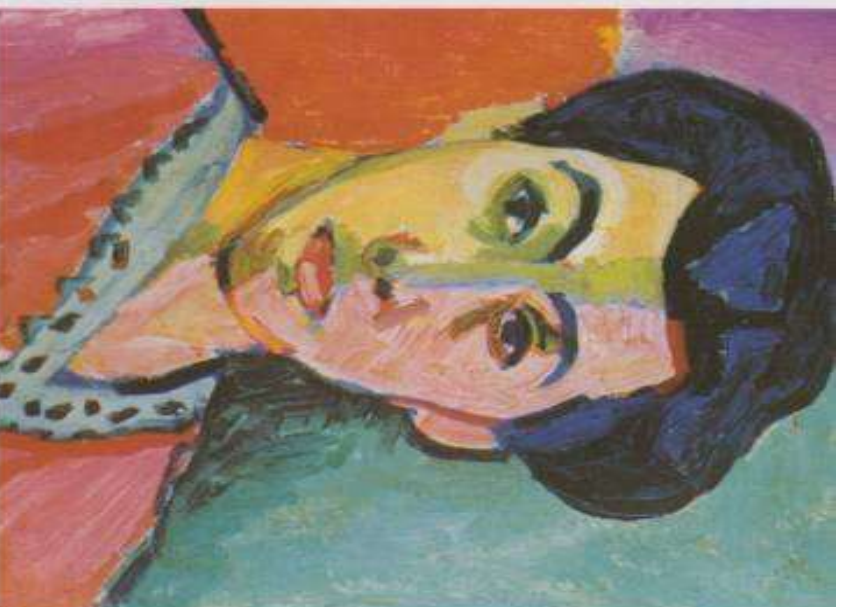
■ Art 31 - Booklet of Reproductions



- 31. Upper left. André Derain, 1880-1954, U.S.A. *The Turning Road, L'Estaque*, 1906. Oil on canvas 50 1/2" x 76 1/2". Museum of Fine Arts, Houston. John A. and Audrey Jones Beck Collection. © Derain 1991 VIS*ART Copyright Inc.
- 32. Upper right. Maurice de Vlaminck, 1876-1958, France. *Les Écluses à Bougival (The Locks at Bougival)*, 1906. Oil on canvas, 54.3 x 64.8 cm. National Gallery of Canada, Ottawa. © de Vlaminck 1991 VIS*ART Copyright Inc. Sightlines 12424.
- 33. Lower left. Henri Matisse, 1869-1954, France. *The Joy of Life (Sketch)*, 1905. 18" x 21 1/2". Statens Museum for Kunst, Copenhagen. Copyright 1990 Succession H. Matisse/ARS, New York.



■ 34. Henri Matisse, 1869-1954, France. *Woman with the Hat*, 1905. Oil on Canvas, 32" x 23 3/4". Collection, Mrs. Walter A. Haas, San Francisco. Copyright 1990 Succession H. Matisse/ARS, New York.

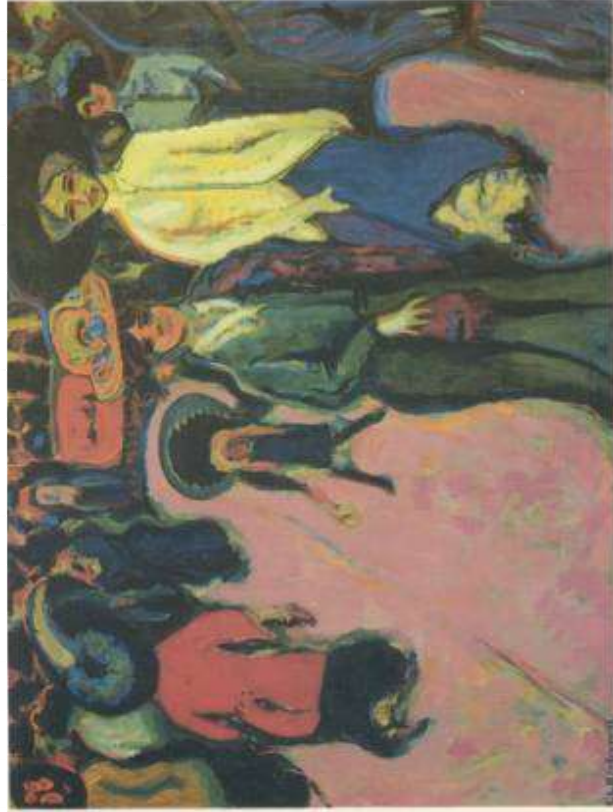


■ 35. Above. Henri Matisse, 1869-1954, France. *Green Stripe (Madame Matisse)*, 1905. Oil and tempera on canvas, 15 7/8" x 12 7/8". Statens Museum for Kunst, Copenhagen. Rump Collection. Copyright 1990 Succession H. Matisse/ARS, New York.

■ 36. Upper right. Ernst Ludwig Kirchner, 1880-1938, Germany. *The Red Cocotte*, 1914-25. Oil on canvas, 47 1/4" x 35 1/2". Staatsgalerie, Stuttgart.

■ 37. Lower right. Ernst Ludwig Kirchner, 1880-1938, Germany. *Street, Berlin*, 1913. 47 1/2" x 35 7/8" (120.6 x 91.1 cm). The Museum of Modern Art, New York. Purchase. *Sightlines* 11252.



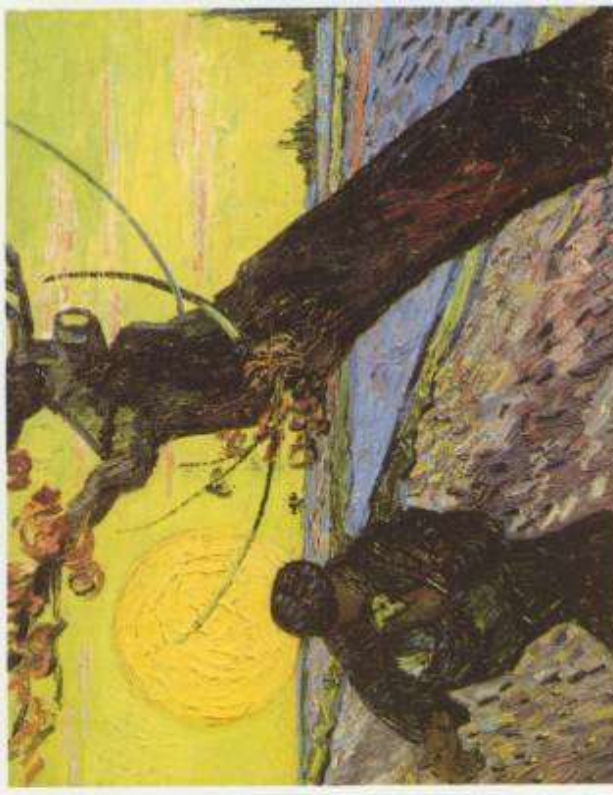


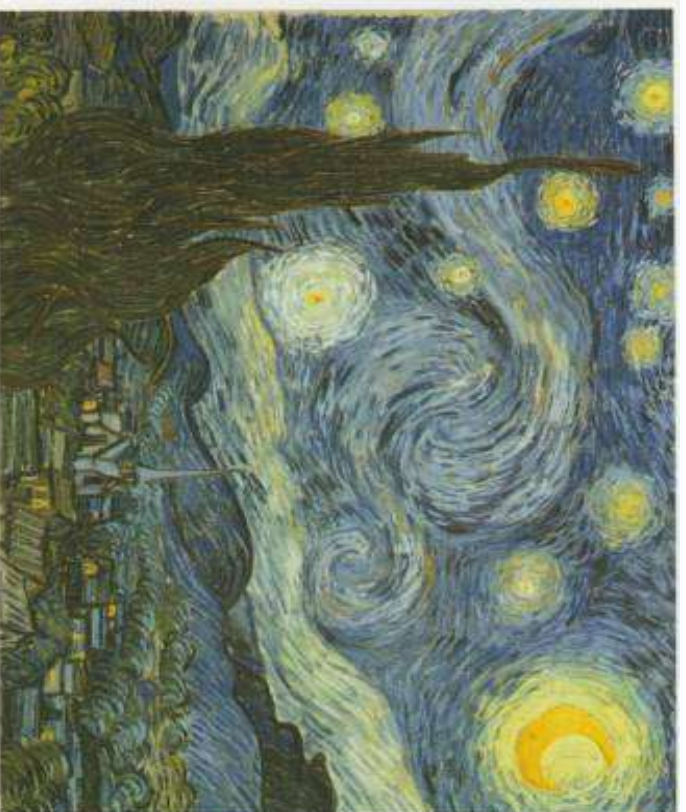
30. Upper left. *Street, Dresden*, 1880-1938, Germany. *Street, Dresden*, 1907. Oil on canvas, 59 1/4" x 78 7/8". Collection, The Museum of Modern Art, New York. Purchase. Sightlines 9347.

39. Upper right. Vincent van Gogh, 1853-90, Netherlands. *Self-Portrait*, 1889. Oil on canvas, 25 1/2" x 21 1/2". Jeu de Paume, Paris. Sightlines 3074.

40. Lower left. Vincent van Gogh, 1853-90, Netherlands. *The Potato Eaters*, 1885. 32 1/4" x 45". Vincent van Gogh National Museum, Amsterdam (V.W. van Gogh Collection).

41. Lower right. Vincent van Gogh, 1853-90, Netherlands. *The Sower*, 1888. Oil on canvas, 12 1/2" x 15 1/4". Stedelijk Museum, Amsterdam. Vincent van Gogh Foundation, Vincent van Gogh Museum, Amsterdam.

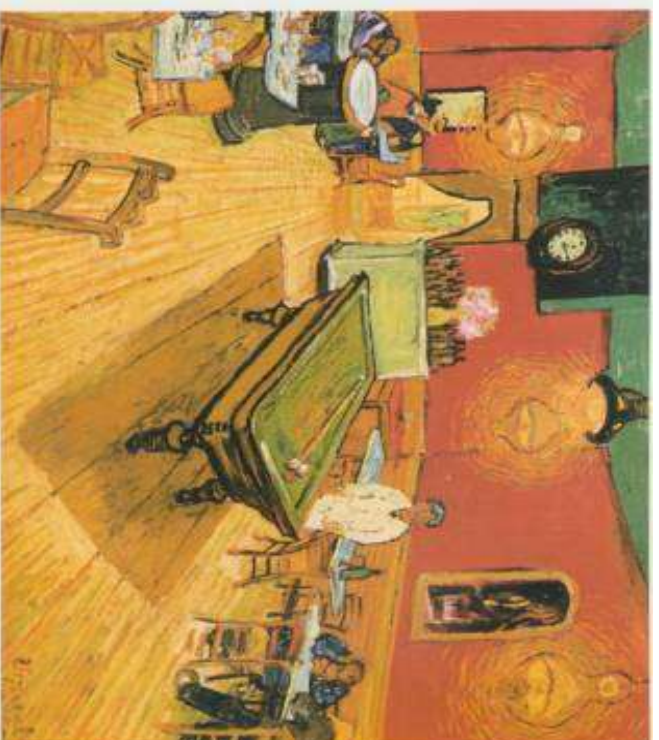


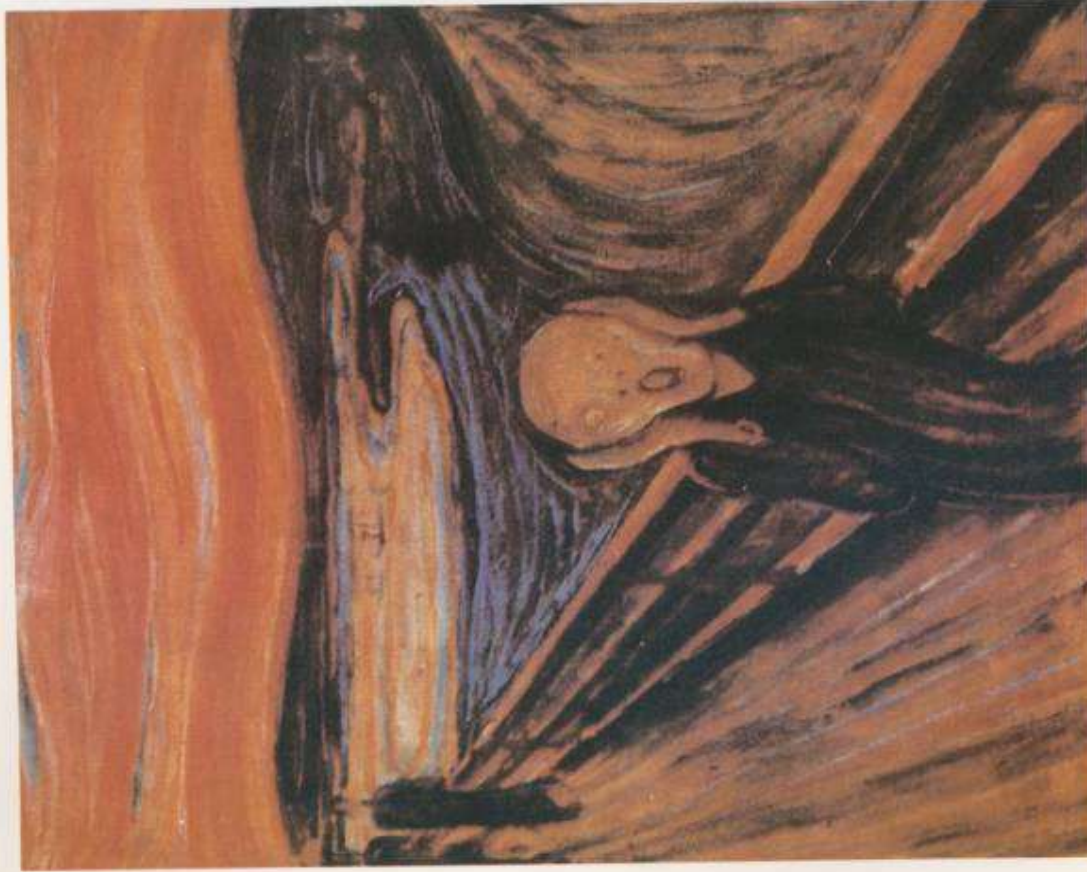


■ 42. Above. Vincent van Gogh, 1853-90, Netherlands. *The Starry Night*, 1889. Oil on canvas, 29" x 36 1/4". Collection, The Museum of Modern Art, New York. Acquired through the Lillie P. Bliss Bequest. Photograph © The Museum of Modern Art, N.Y. *Sightlines* 9224.

■ 43. Upper right. Vincent van Gogh, 1853-90, Netherlands. *The Night Café*, 1888. Oil on canvas, 27 1/2" x 35". Yale University Art Gallery, New Haven, Connecticut. Bequest of Stephen C. Clark. Yale University Art Gallery. *Sightlines* 9227.

■ 44. Lower right. Oskar Kokoschka, 1886-1980, Austria. *The Tempest or The Bride of the Wind*, 1914. Oil on canvas, 71 1/4" x 86 5/8". Kunstmuseum, Basel. © Kokoschka 1991 VIS'ART Copyright Inc.





■ 45. Edvard Munch. 1883-1944, Norway. *The Scream*, 1893. Oil on cardboard, 36" x 29". Nasjonalgalleriet, Oslo.

■ Art 31 - Booklet of Reproductions



■ 46. George Grosz. 1893-1959, Germany. *Metropolis*, 1917. Oil on cardboard, 26" x 19". The Museum of Modern Art, New York. © Grosz 1991 VIS*ART Copyright Inc. Sightlines 11200.



■ 47. Upper left, Vasily Kandinsky, 1866-1944, Russia. *First Abstract Watercolor*, 1910. Watercolor and ink, 19 1/4" x 25". Collection Mme. Nina Kandinsky, Neuilly-Sur-Seine, France. © Kandinsky 1990. VIS*ART Copyright Inc.



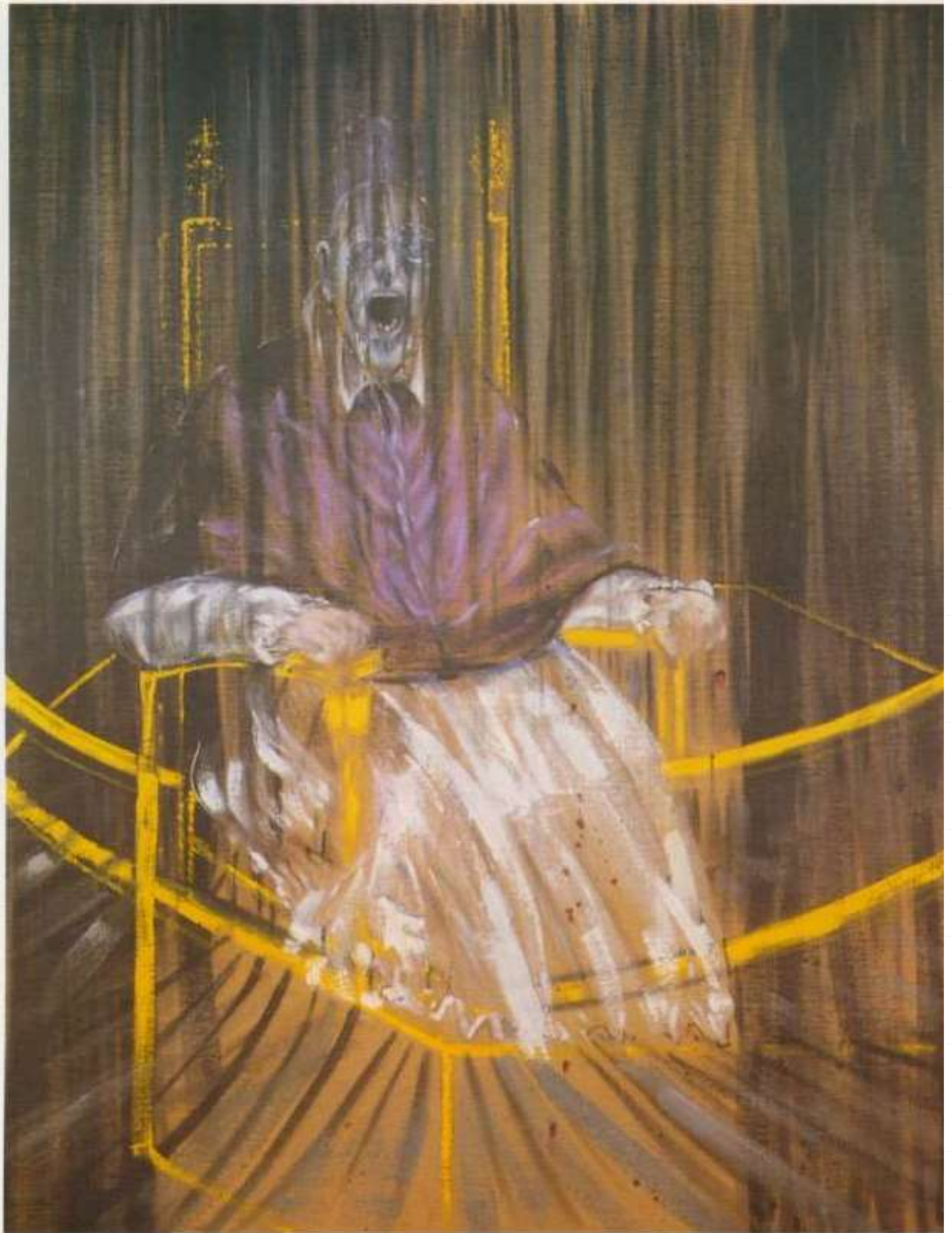
■ 48. Upper right, Vasily Kandinsky, 1866-1944, Russia. *Black Lines No. 189*, 1913. Oil on canvas, 51" x 51 5/8". (129.4 x 131.1 cm.). Solomon R. Guggenheim Museum, New York. Gift, Solomon R. Guggenheim, 1937. Photograph by David Heald. © Kandinsky 1990. VIS*ART Copyright Inc.



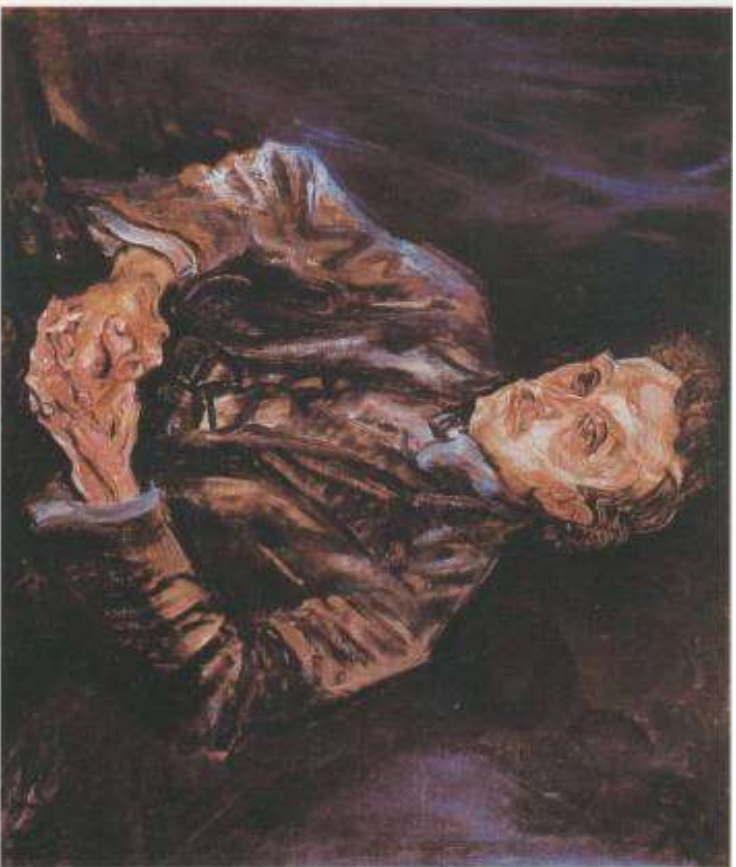
■ 49. Jackson Pollock, 1912-1956, U.S.A. *Lavender Mist*, 1950. Oil, enamel, and aluminum paint on canvas, 74" x 91". Collection, Alfonso, East Hampton, New York. © Pollock 1990 VIS*ART Copyright Inc.



■ 50. Lee Krasner, 1911-____, U.S.A. *The Guardian*, 1960. 53" x 58". Whitney Museum of American Art, New York. © Krasner 1991 VIS*ART Copyright Inc.



■ 51. Francis Bacon, 1909-____, Britain. *Study After Velásquez's Portrait of Pope Innocent X, 1953*. Oil on canvas, 60 1/4" x 46 1/2". Reproduced with permission of the artist, Francis Bacon; the Marlborough Gallery, London; and the Des Moines Art Center, Iowa. Sightlines 10999.



■ 52. Oskar Kokoschka, 1886-1980, Austria. *Portrait of Adolf Loos*, 1909. 29 1/8" x 35 7/8". Staatliche Museen, Berlin. © 1991 VIS*ART Copyright Inc.



■ 53. Georges Rouault, 1871-1958, France. *The Old King*, 1916-37. 30 1/4" x 21 1/4". Carnegie Institute, Pittsburgh. © Rouault 1991 VIS*ART Copyright Inc.



■ 54. Upper left. Paula Modersohn-Becker, 1867-1907, German. *The Old Woman by the Poorhouse Duckpond*.

■ 55. Lower left. Henri Rousseau, 1844-1910, France. *I Myself: Portrait-Landscape*, 1890. Oil on canvas. 143 x 110.3 cm. Private National Gallery/ART Resource, N.Y.

■ 56. Upper right. Käthe Kollwitz, 1867-1945, Germany. *Self-Portrait with a Pencil*. Charcoal drawing with a pencil. Washington, D.C. National Gallery of Art, the Rosenwald Collection. © Kollwitz 1912. VIS*ART Copyright Inc.

■ 57. Lower right. Marc Chagall, 1889-1985, France. *Self-Portrait: Seven Fingers*. 1912. Oil on canvas. 4'1 5/8" x 3'6 1/8" (1.26 x 1.07 m). Stedelijk Museum, Amsterdam. © Chagall 1912. VIS*ART Copyright Inc.





■ 58. Upper left. Henri Rousseau, 1844-1910, France. *The Dream*, 1910. Oil on canvas, 6'8 1/2" x 9'9 1/2" (204.5 x 298.5 cm). Collection, The Museum of Modern Art, New York. Gift of Nelson A. Rockefeller. Sightlines 9591.

■ 59. Upper right. Salvador Dalí, 1904-1989, Spain. *The Persistence of Memory*, 1931. Oil on canvas 24.1 x 33 cm. The Museum of Modern Art, New York. (anonymous gift). © Dalí 1991 VIS-ART Copyright Inc.

■ 60. Lower left. René Magritte, 1898-1967, Belgium. *The Human Condition I*, Oil on canvas, 39 1/2" x 31 1/2". Private collection France. © Magritte 1991 VIS-ART Copyright Inc.

■ 61. Lower right. René Magritte, 1898-1967, Belgium. *Castle of the Pyrenees*, 1959. Oil on canvas, 87 5/8" x 50 5/8". Collection, H. Torczyner, New York. © Magritte 1991 VIS-ART Copyright Inc. Sightlines 11303.





■ 62. René Magritte, 1898-1967, Belgium. *False Mirror*, 1928. Oil on canvas, 21 1/4" x 31 7/8". The Museum of Modern Art, New York. © Magritte 1991
VIS*ART Copyright Inc. Sightlines 9405.



■ 64. Claude Monet, 1840-1926, France. *Haystacks in Snow*, 1891. Oil on canvas, 26" x 38". The Metropolitan Museum of Art, N.Y. Bequest of Mrs. H. O. Havemeyer, 1929. The H. O. Havemeyer Collection. (29.100.109)
Sightlines 9467.



■ 63. René Magritte, 1898-1967, Belgium. *Listening Chamber*, 1953. Oil on canvas, 31 1/2" x 39 3/8". William N. Copley Collection.
© Magritte 1991 VIS*ART Copyright Inc. Sightlines 9404.



■ 65. Berthe Morisot, 1841-95, France. *The Sisters*, 1869. Oil on canvas, 52.1 x 81.3 cm (20 1/2" x 32"). The National Gallery of Art, Washington, D.C.
Gift of Mrs. Charles S. Carstairs, 1952.



66. Upper left. Edgar Degas, 1834-1917, France. *The Dancing Class*. Oil. Museum of Impressionism, Paris. ART Resource, N.Y. Sightlines 2951.

67. Upper centre. Karen Percy, Olympic Medal Winner, 1989. Canapress Photo Service.

68. Right. Pierre Auguste Renoir, 1841-1919, France. *The Boatmen's Lunch*, 1876. Oil on canvas, 51 3/8" x 66 1/2". The Louvre (Jeu Paume), Paris.

69. Far right. Andy Warhol, 1930-1987, U.S.A. *8 Heinz...Boxes*, 1964. Collection, Hartford Yang, Aldrich Museum of Contemporary Art, Ridgefield, CT. © Warhol 1991 VIS-ART Copyright Inc. Sightlines 11971.





■ Art 31 - Booklet of Reproductions



- 70. Upper left. Claes Oldenburg, 1929-____, U.S.A. *Dixies, Cup and Candies*, 1962. Canvas, 13" x 13", Collection, Hanford Yang, Aldrich Museum of Contemporary Art, Ridgefield, CT. © Oldenburg 1991 VIS*ART Copyright Inc. *Sightlines* 9933.
- 71. Lower left. Claes Oldenburg, 1929-____, U.S.A. *Giant Hamburger*, 1962. Painted sailcloth stuffed with foam, height 132 cm. Art Gallery of Ontario. © Oldenburg 1991 VIS*ART Copyright Inc. *Sightlines* 12278.
- 72. Right. Claes Oldenburg, 1929-____, U.S.A. *Proposal... Typewriter Eraser*, 1970. Coloured mixed media, 58" x 24" x 36". Janis Gallery, Aldrich Museum of Contemporary Art, Ridgefield, CT. © Oldenburg 1991 VIS*ART Copyright Inc. *Sightlines* 11838.



■ 73. Far left. Robert Delaunay, 1882-1941, France. *Eiffel Tower*, 1911. Oil on canvas, 79 1/2" x 54 1/2" (202 x 138.4 cm.). Solomon R. Guggenheim Museum, New York. Gift, Solomon R. Guggenheim, 1937. Photograph by David Heald. © Delaunay 1990 VIS*ART Copyright Inc. Sightlines 11093.

■ 74. Left. Robert Delaunay, 1882-1941, France. *The Red Tower*, 1911-1912. Oil on canvas, 49 1/4" x 35 3/8" (125 x 90.3 cm.). Solomon R. Guggenheim Museum, New York. Photograph by David Heald. © Delaunay VIS*ART Copyright Inc.

■ 75. Lower left. Robert Delaunay, 1882-1941, France. *Homage to Blérif*, 1914. Oil on canvas, 76 1/2" x 50 1/2". Kunstmuseum, Basle, Emmanuel Hoffman Foundation. © Delaunay 1990 VIS*ART Copyright Inc.

■ 76. Lower right. Robert Delaunay, 1882-1941, France. *Eiffel Tower*, 1911. Ink/pencil on cardboard, 21 1/4" x 19 1/4". The Museum of Modern Art, New York. © Delaunay 1990 VIS*ART Copyright Inc. Sightlines 11092.





■ 77. Far left. Claude Monet, 1840-1926, France. *St. Lazare Station, 1877*. Oil on canvas, 24" x 31". Collection of Mr. & Mrs. David Rockefeller, New York. *Sightlines* 9465.



■ 78. Left. Fernand Léger, 1881-1955, France. *The Mechanic, 1920*. Oil on canvas, 115.5 x 89.3 cm. National Gallery of Canada. © Léger 1991 VIS*ART Copyright Inc. *Sightlines* 12691.



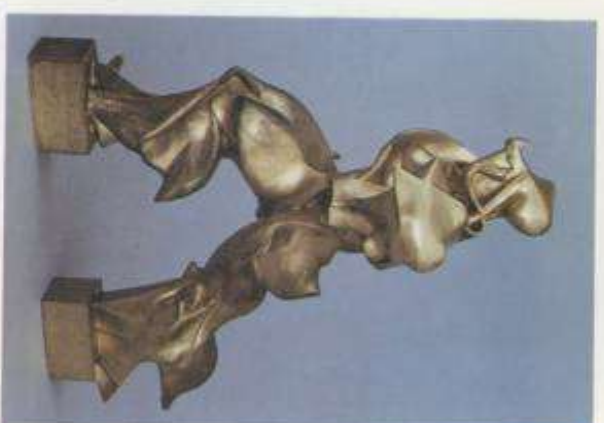
■ 79. Fernand Léger, 1881-1955, France. *The City, c1919*. Oil on canvas, 90 3/4" x 117 1/4". Philadelphia Museum of Art; A.E. Gallatin Collection. Accession No. 52-61-58. © Léger 1991 VIS*ART Copyright Inc. *Sightlines* 9377.



■ 80. Joseph Mallord William Turner, 1775-1851, Britain. *Snowstorm: Steamboat off a Harbour's Mouth, 1842*. Oil on canvas, 91.5 x 122 cm. Tate Gallery, London. ART Resource, N.Y.



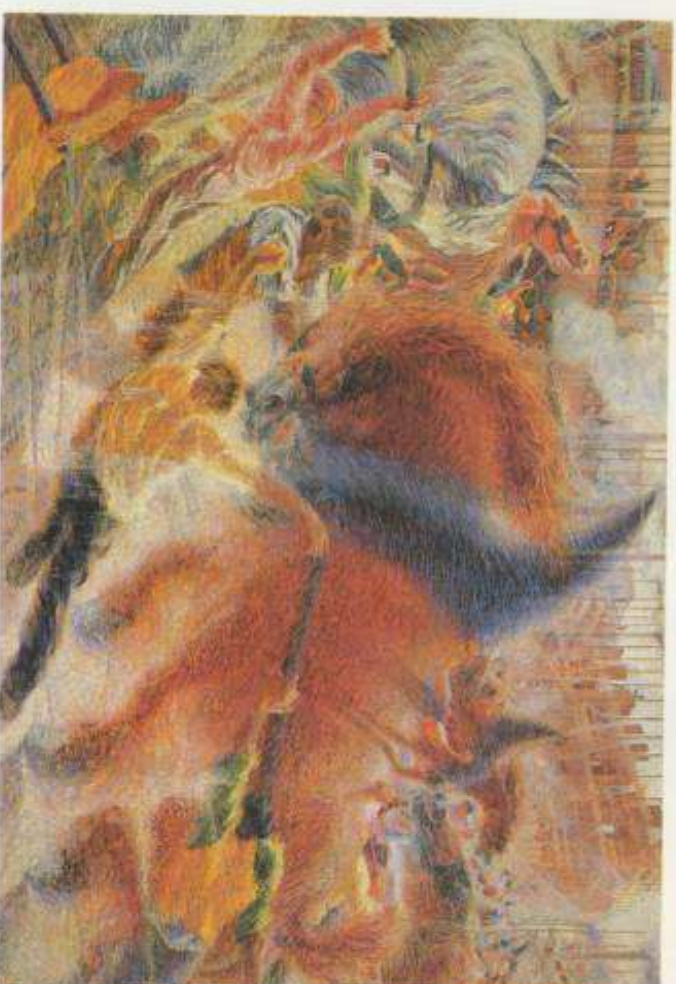
■ 81. Upper left. Umberto Boccioni, 1882-1916, Italy. *Development of a Bottle in Space*, 1912. Silvered bronze (cast 1913). 15" x 23 3/4" x 12 7/8" (38.1 x 60.3 x 32.7 cm). Collection, The Museum of Modern Art, New York. Artistide Mailloir Fund. Signiflines 9786.

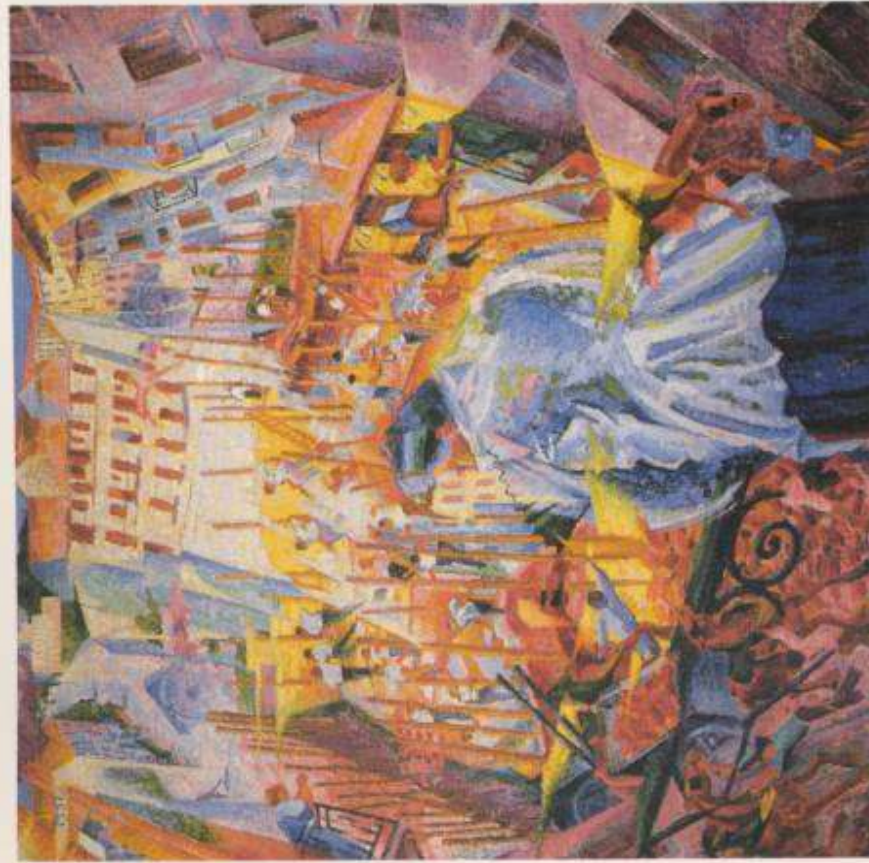


■ 82. Lower left. Umberto Boccioni, 1882-1916, Italy. *Dynamism of a Soccer Player (dynamismo di un footballer)*, 1913. Oil on canvas, 6'4 1/8" x 6'7 1/8" (Collection, The Museum of Modern Art, New York. The Sidney and Harriet Janis Collection. Signiflines 9038.

■ 83. Upper right. Umberto Boccioni, 1882-1916, Italy. *Unique Forms of Continuity in Space*, 1913. Bronze (cast 1931), 43 7/8" x 34 7/8" x 15 3/4" (111.2 x 88.5 x 40 cm). Collection, The Museum of Modern Art, New York. Acquired through the Lillie P. Bliss Bequest. Signiflines 11579.

■ 84. Lower right. Umberto Boccioni, 1882-1916, Italy. *The City Rises*, 1910. Oil on canvas, 6' 6 1/2" x 9' 10 1/2" (199.3 x 301 cm). Collection, The Museum of Modern Art, New York. Mrs. Simon Guggenheim Fund.

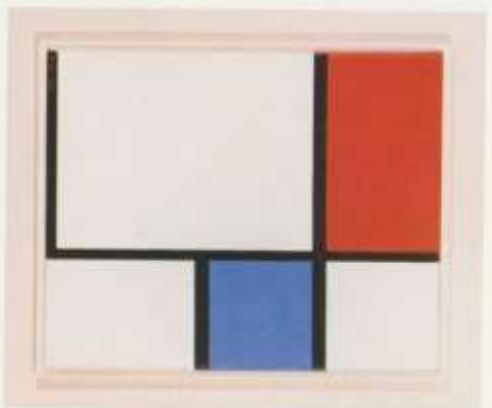




■ 85. Umberto Boccioni, 1882-1916, Italy. *The Noise of the Street Reaches into the House*, 1912. Oil on canvas, 100 x 100.5 cm. Sprengel Museum, Hanover.

■ 86. Right. Piet Mondrian, 1872-1944, U.S.A. *Church at Zoutelande*, 1909-10. Oil on canvas, 90.7 x 62.2 cm. Canadian Centre for Architecture, Montreal. Photo Art Gallery of Ontario. © Mondrian 1991 VIS'ART Copyright Inc. Sightlines 12742.





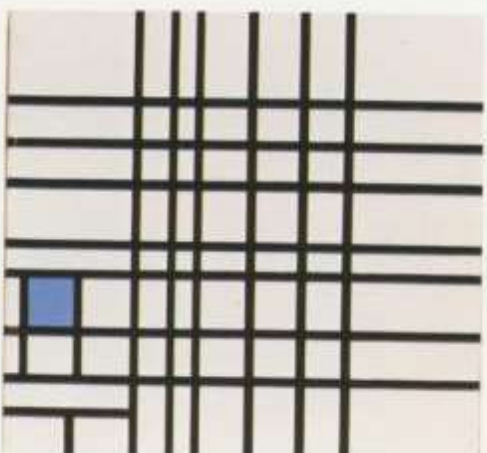
■ 87. Piet Mondrian, 1872-1944, U.S.A.
Composition, 1925. Oil on canvas,
15 7/8" x 12 5/8". The Museum of
Modern Art, New York. © Mondrian
1991 VIS*ART Copyright Inc.
Sightlines 11328.



■ 89. Piet Mondrian, 1872-1944, U.S.A.
Composition in Brown and Gray, c 1913.
Oil on canvas, 33 3/4" x 29 3/4". The
Museum of Modern Art, New York.
© Mondrian 1991 VIS*ART Copyright Inc.
Sightlines 11327.



■ 91. Piet Mondrian, 1872-1944, U.S.A. *Evening Sky*,
1907-08. Oil on paper, 64.0 x 74.0 cm. Art Gallery of
Ontario. © Mondrian 1991 VIS*ART Copyright Inc.
Sightlines 12247.



■ 88. Piet Mondrian, 1872-1944, U.S.A.
Composition, 1936-42. Oil on canvas,
62.0 x 60.5 cm. National Gallery of
Canada. © Mondrian 1991 VIS*ART



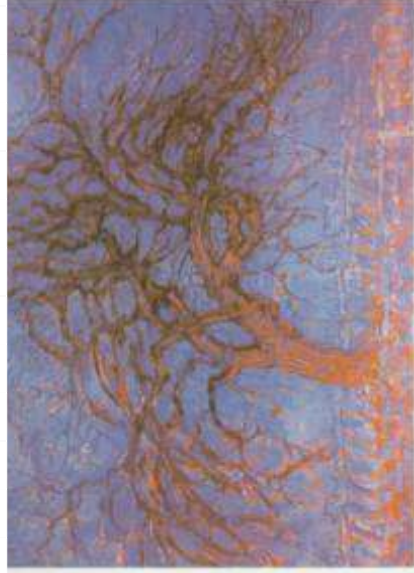
■ 90. Piet Mondrian, 1872-1944, U.S.A. *Dune IV*,
1909-10. Oil on canvas, 33.0 x 46.0 cm.
Gemeentemuseum, The Hague. © Mondrian 1991
VIS*ART Copyright Inc. *Sightlines* 12248.



■ 92. Piet Mondrian, 1872-1944, U.S.A. *Farm at Duivendrecht*,
1905-07. Charcoal on paper, 46.4 x 60 cm.
Art Gallery of Ontario. © Mondrian 1991 VIS*ART Copyright
Inc. *Sightlines* 12249.



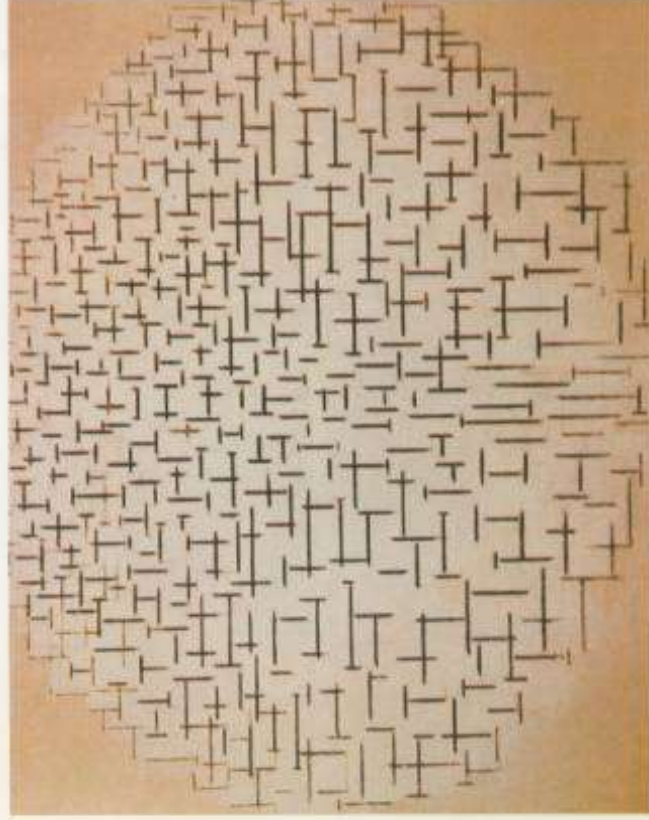
■ 93. Piet Mondrian, 1872-1944, U.S.A. *Pier and Ocean*, 1914. Charcoal and watercolor, 34 5/8" x 44". The Museum of Modern Art, New York. © Mondrian 1991 VIS*ART Copyright Inc. Sightlines 9453.



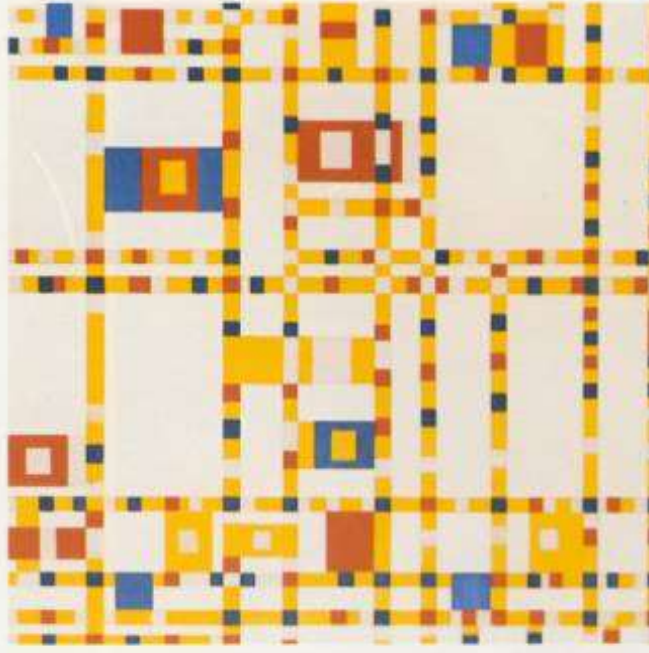
■ 94. Piet Mondrian, 1872-1944, U.S.A. *The Red Tree*, 1908. Oil on canvas, 27 1/2" x 40". Gemeentemuseum, The Hague. © Mondrian 1991 VIS*ART Copyright Inc.



■ 95. Piet Mondrian, 1872-1944, U.S.A. *The Gray Tree*, 1912. Oil on canvas, 31" x 42 1/4". Gemeentemuseum, The Hague. © Mondrian 1991 VIS*ART Copyright Inc.



■ 96. Piet Mondrian, 1872-1944, U.S.A. *Pier and Ocean*, 1915. Oil on canvas, 34 1/2" x 45 1/4". Gemeentemuseum, The Hague. © Mondrian 1991 VIS*ART Copyright Inc.



■ 97. Piet Mondrian, 1872-1944, U.S.A. *Broadway Boogie Woogie*, 1942-43. Oil on canvas, 50" x 50". The Museum of Modern Art, New York. © Mondrian 1991 VIS*ART Copyright Inc.



■ 98. Giacomo Balla, 1871-1958, Italy. *Speeding Automobile*, 1912. Oil, 22" x 27". The Museum of Modern Art, New York. Signatures 8933.



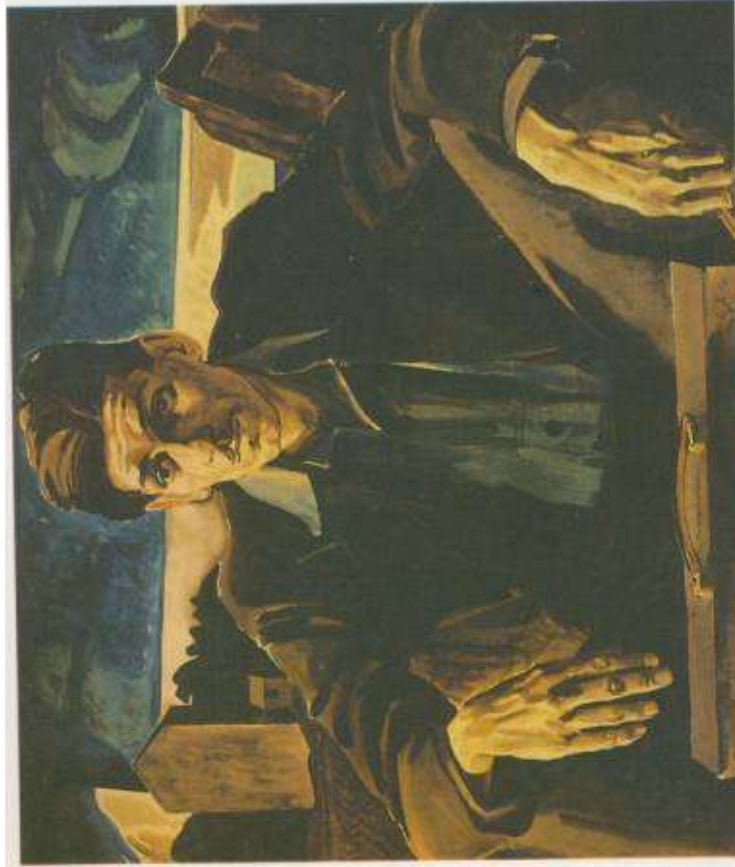
■ 100. Giacomo Balla, 1871-1958, Italy. *Dynamism of a Dog on a Leash*. Oil on canvas, 35 1/2" x 43 1/4". Albright-Knox Gallery, Buffalo. Bequest of A. Conger Goodyear.



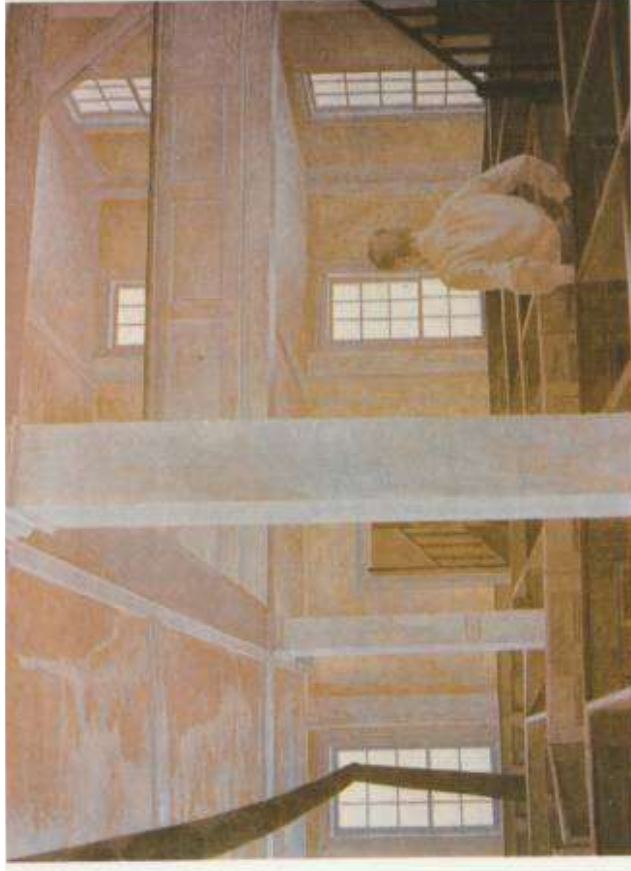
■ 99. Gino Severini, 1883-1966, Italy. *Red Cross Train Passing Village*, 1915. Oil on canvas, 35" x 45 3/4". Solomon R. Guggenheim Museum, New York. © Severini 1991 VIS-ART Copyright Inc. Signatures 9627.

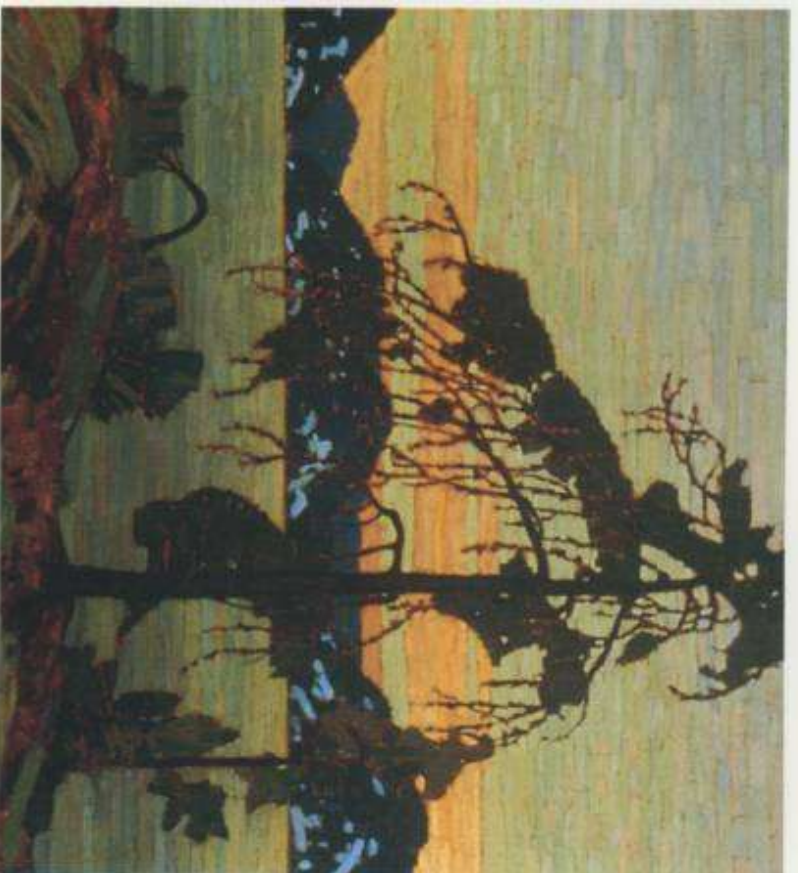


■ 101. Fernand Léger, 1881-1955, France. *The Cardplayers*, 1917. Oil on canvas, 50 1/2" x 76". Kröller-Müller Museum, Otterlo. © Léger 1991 VIS-ART Copyright Inc.



- 102. Above. Charles Comfort, 1900-____, Canada. Young Canadian, 1932. Watercolour on paper, 88.8 x 103.6 cm.
- 103. Upper right. Alex Colville, 1920-____, Canada. Visitors Are Invited to Register, 1954. Gouache, 28 1/4" x 23 1/4" (72 x 59 cm). Saskatoon Gallery and Conservatory Corporation. © Colville 1990 VIS*ART Copyright Inc.
- 104. Lower right. Andre Bieler, 1896-____, Canada. Gatineau Madonna, 1940. Tempera on pressured board, 92.0 x 107.4 cm. National Gallery of Canada. Sightlines 13085.





■ 105. Above. Tom Thomson, 1877-1917, Canada. *The Jack Pine*, 1916-17. Oil on canvas, 127.9 x 139.8 cm. National Gallery of Canada. *Sightlines* 14595.

■ 106. Upper right. Homer Watson, 1855-1936, Canada. *The Flood Gate*, 1900. Canvas, 32 1/2" x 46 3/4". National Gallery of Canada. *Sightlines* 14701.

■ 107. Lower right. Maurice Cullen, 1866-1934, Canada. *Lewis from Québec*, 1906. Oil on canvas, 76.7 x 102.2 cm. Art Gallery of Ontario. Gift from the Albert H. Robson Memorial Subscription Fund, 1946. *Sightlines* 13324.

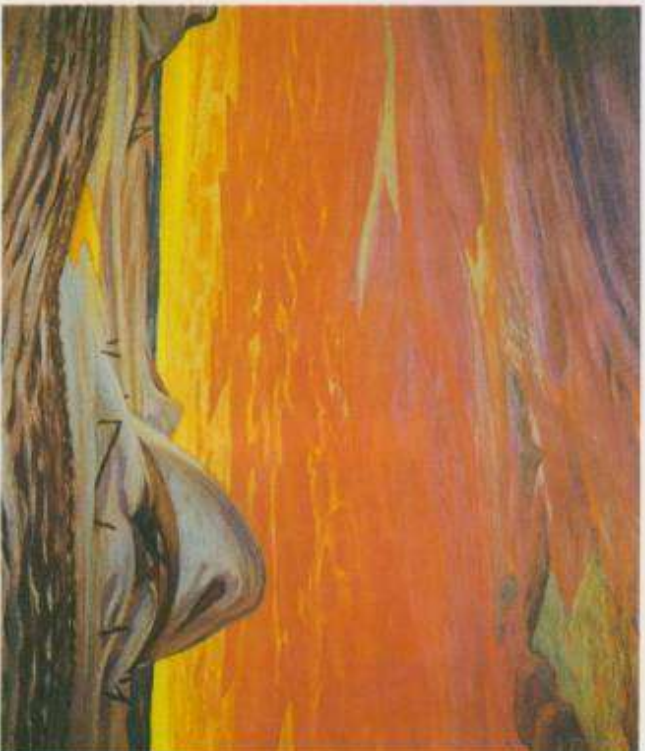




■ 108. Lawren S. Harris, 1885-1970, Canada. *Lake and Mountains*. Oil on canvas, 130.8 x 160.6 cm, 1927-28. Art Gallery of Ontario, Toronto. Gift from the Fund of T. Eaton Co. Ltd. for Canadian Works of Art, 1948. Reprinted with permission from the Harris family.



■ 109. Emily Carr, 1871-1945, Canada. *Among the Firs*, c 1930-40. Oil, 36" x 30". Collection of the Glenbow Museum, Calgary, Alberta. 56.2.2. Sightlines 14891.



■ 110. Upper left, Illingworth Kerr, 1905-1989, Canada. *Strawstacks, March Thaw*, 1935. Oil, 30 1/4" x 36 3/4". With permission of Executor Dr. John Snow.

■ 111. Upper right, Gordon Smith, 1919-____, Canada. *West Coast M-5*, 1974. Acrylic on canvas, 183 x 152 cm. Toronto Dominion Bank Collection, Toronto. Reproduced with permission of the artist.

■ 112. Lower left, William Kurelek, 1927-1977, Canada. *The Ukrainian Pioneer #3*, 1971. Mixed media on plywood, 152 x 122 cm. Collection of the House of Commons, Ottawa. Courtesy The Isaacs Gallery, Toronto.

■ 113. Lower right, William Kurelek, 1927-1977, Canada. *The Ukrainian Pioneer #6*, 1971. Mixed media on plywood, 152 x 122 cm. Collection of the House of Commons, Ottawa. Courtesy The Isaacs Gallery, Toronto.





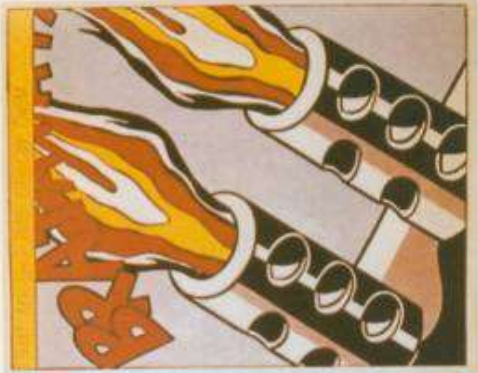
■ 114. A.Y. Jackson, 1882-1974, Canada. *Alberta Rhythm*, 1948. Oil on canvas, 97.8 x 120.0 cm. Private collection, Toronto. Art Gallery of Ontario. *Sightlines* 13766.

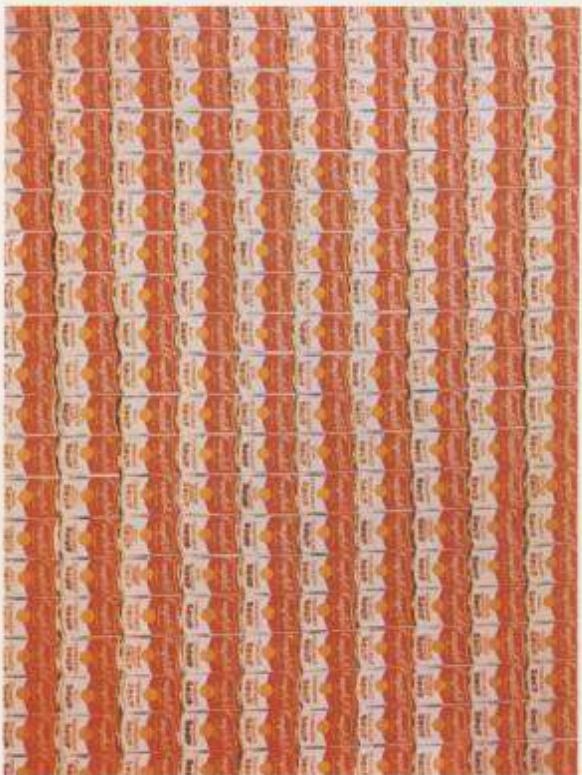


■ 115. Roy Lichtenstein, 1923-____, U.S.A. *Drowning Girl*, 1963. Oil and synthetic polymer paint on canvas 67 5/8" x 66 3/4". The Museum of Modern Art, New York. Philip Johnson Fund and Gift of Mr. and Mrs. Bagley Wright. © Lichtenstein 1991 VIS'ART Copyright Inc.



■ 116. Roy Lichtenstein, 1923-____, U.S.A. *As I Opened Fire*, 1974. Magna on canvas, 68" x 168 1/4". Stedelijk Museum, Amsterdam. © Lichtenstein 1991 VIS'ART Copyright Inc.

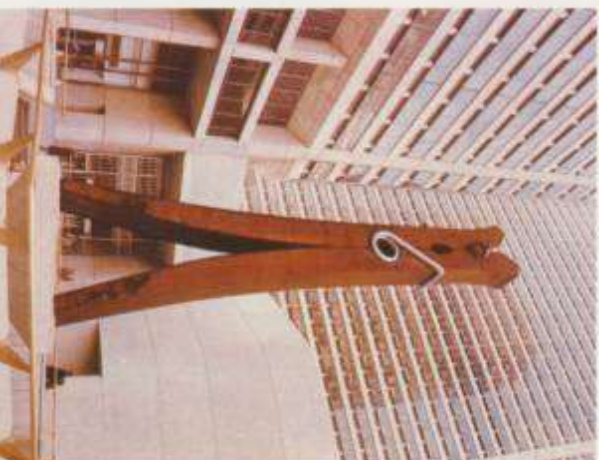




■ 117. Andy Warhol, 1930-1987, U.S.A., 200 Campbell Soup Cans, 1962. Oil on canvas, 72" x 100". Private Collection. © Warhol 1991 VIS*ART Copyright Inc.



■ 118. Claes Oldenburg, 1929-____, U.S.A., *Soft Typewriter (Model Ghost)*, 1963. Mixed materials, 9" x 28" x 26". Karl Stroher Collection, Germany. © Oldenburg, 1991 VIS*ART Copyright Inc.

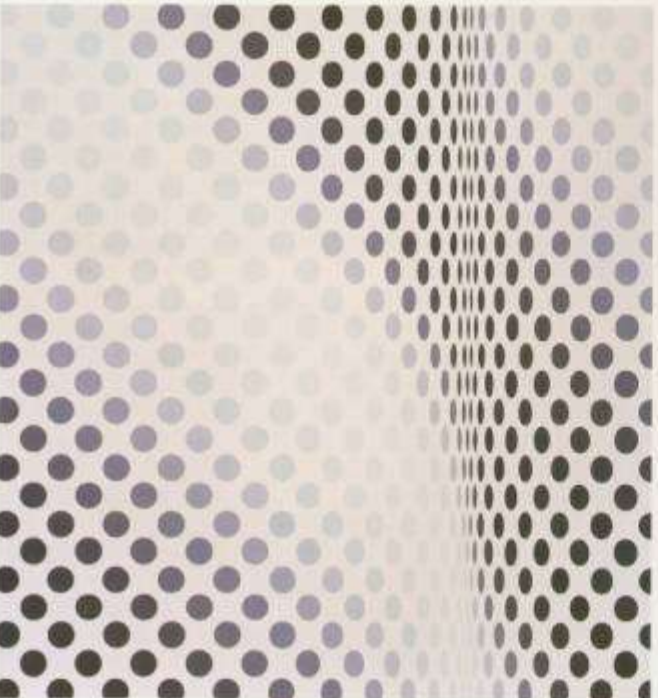
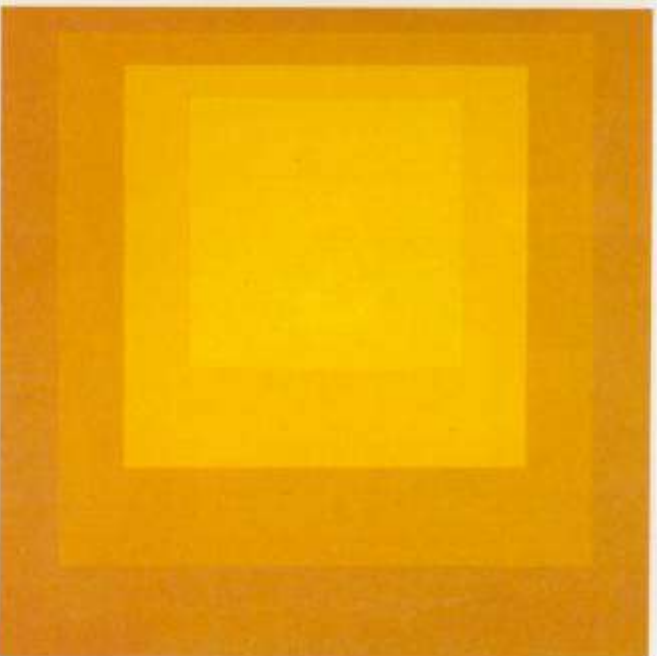
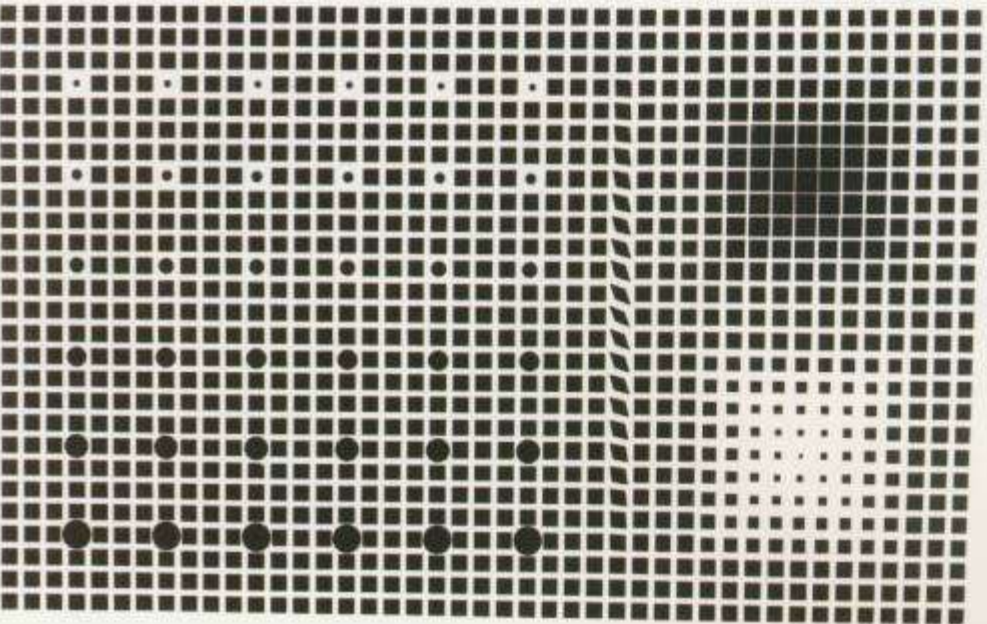


■ 119. Far left, Andy Warhol, 1930-1987, U.S.A., *Marilyn Monroe Diptych*, 1962. Oil on canvas, in two panels, 82" x 114". Tate Gallery, London. © Warhol, 1991 VIS*ART Copyright Inc.

■ 120. Left, Claes Oldenburg, 1929-____, U.S.A., *Clothespin*, Philadelphia, 1976. Height 540". Leo Castelli Gallery, New York.



- 121. James Rosenquist, 1933-____, U.S.A. *The F-111*, 1965. Oil on canvas with aluminum, in four parts, 120" x 1032". Private Collection, New York. © Rosenquist 1991 VIS*ART Copyright Inc.



122. Upper left. Josef Albers. 1888-1976. U.S.A. *Homage to the Square: Departing in Yellow*. Tate Gallery, London. © Albers 1991 VIS*ART Copyright Inc.

123. Upper right. Stuart Davis. 1894-1963. U.S.A. *Odol*. 1924. Oil on canvas. 24" x 18". Private Collection, Courtesy Andrew Crispo Gallery, New York. © Davis 1991 VIS*ART Copyright Inc.

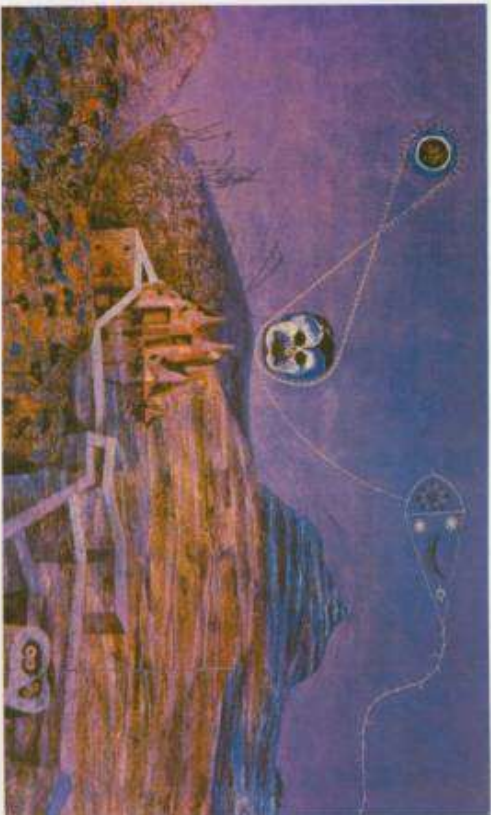
124. Lower left. Victor Vasarely. 1908-1997. Hungary. *Supermovae*. 1959-61. Tate Gallery, London. © Vasarely 1991 VIS*ART Copyright Inc.

125. Lower right. Bridget Riley. 1931-2022. Britain. *Hesitate*. 1964. Tate Gallery, London. ART Resource, N.Y.



- 126. Far left. Guido Molinari, 1933-____, Canada. *Rhythmic Mutation No. 9*, 1965. Acrylic on canvas, 203.2 x 152.4 cm. The National Gallery of Canada, Ottawa. © Molinari, 1980 VIS*ART Copyright Inc.
- 127. Near left. Robert Cottingham, 20 C, Britain. *Roxy*, 1972. Oil on canvas, 78" x 78". Serpentine Gallery, London.
- 128. Lower left. Ken Danby, 1940-____, Canada. *Pulling Out*, 1968. 32" x 44". Collection of Mr. A. Latner. Moos Gallery, Toronto. With permission of the artist.
- 129. Lower right. Mary Pratt, 1935-____, Canada. *Split Grise*, 1979. Oil on board, 55 x 63.2 cm. Collection, C.I.L. Courtesy of the artist.





- 130. Upper left, Alfred Pellin, 1906-1988, Canada. *Jardin Mauve*, 1958. Oil on canvas, 140 x 186.5 cm. Private Collection, Montreal. Reproduced with the permission of Madeleine Pellin.
- 131. Upper right, Auguste Rodin, 1840-1917, France. *Monument to Balzac*, 1897. Height 9'3". The Museum of Modern Art, New York. Artists Rights Society. Sighlines 11892
- 132. Lower right, Louise Nevelson, 1900-____, U.S.A. *Sky Cathedral*, 1958. Wood, 343.9 x 305.4 x 45.7 cm. Collection, The Museum of Modern Art, New York. Gift of Mr. and Mrs. B. Midwoff.
- 133. Lower left, Irene Whittome 20 C, Canada. *The White Museum II*, 1975. Mixed media, each 219.1 x 25.4 x 15.8 cm. Art Gallery of Ontario. Reproduced with permission of the artist.





■ 134. Left, Marisol, 1930-____, U.S.A. *The Family*, 1962. Painted wood and other materials in three sections, 82 5/8" x 65 1/2". Collection, The Museum of Modern Art, New York.
© Marisol 1991 VIS*ART Copyright Inc. Sightlines 11787.

■ 135. Upper right. Georges Rouault, 1871-1958, France. *In the Old Fauberg Kitchen*. © Rouault 1991 VIS*ART Copyright Inc.

■ 136. Lower right. Jachareff Christo, 1935-____, U.S.A. *The Museum of Modern Art Packaged, Project for New York*. Scale model 1968. Fabric, twine, polyethelene, wood and paint, 16" x 48 1/8" x 24 1/8". Copyright Christo 1968. Collection, The Museum of Modern Art, New York. Gift of Mrs. Dominique de Menil. © Christo 1991 VIS*ART Copyright Inc. Sightlines 9831.

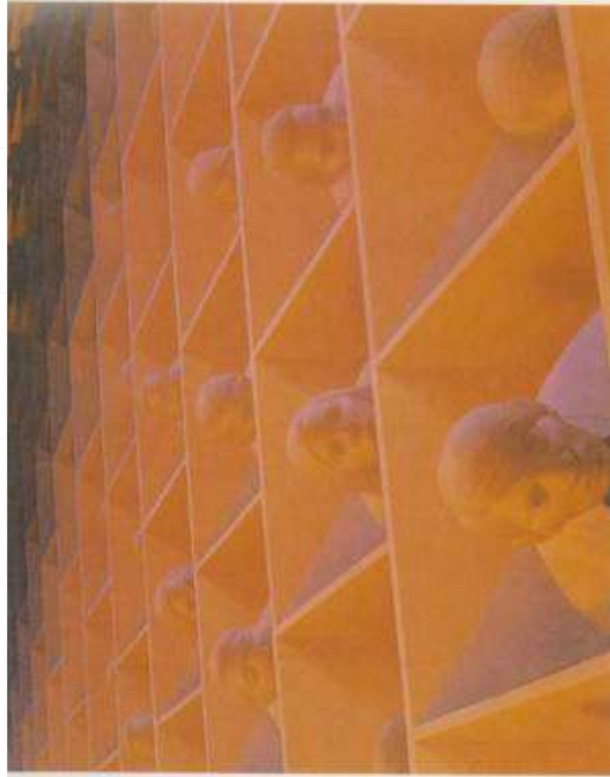


■ 137. Above. Georges Rouault, 1871-1958, France. *The Flight into Egypt I*. © Rouault 1991 VIS*ART Copyright Inc.

■ 138. Upper right. George Tooker, 1920-____, U.S.A. *The Subway*, 1950. Tempera, 18" x 36". Collection of Whitney Museum of American Arts. By permission of the artist, George Tooker. *Signatures* 9687.

■ 139. Lower right. Georges Rouault, 1871-1958, France. *The Flight into Egypt II*. © Rouault 1991 VIS*ART Copyright Inc.





■ 140. George Tooker, 1920-____, U.S.A. *Landscape with Figures*, 1966. Egg tempera on gesso panel, 26" x 30". Private Collection. By permission of the artist, George Tooker.



■ 141. Otto Rogers, 1935-____, Canada. *Fields of Flowers*, 1958. Colour serigraph graphic, 50.3 x 73.3 cm. Art Gallery of Hamilton. Used with permission of the artist. Sightlines 14456.



■ 142. Otto Rogers, 1935-____, Canada. *Silver Field*. Canvas, charcoal, acrylic, collage 30.7 x 122.5 cm. Art Gallery of Hamilton. Used with permission of the artist. Sight



■ 143. Otto Rogers, 1935-____, Canada. *Mondrian and the Prairie Landscape*, 1978. Acrylic on canvas, 152.4 x 152.4 cm. Edmonton Art Gallery. Used with permission of the artist. Sightlines 14455.



■ 144. Upper left, Otto Rogers, 1935-____, Canada. *Summer Moon Storm*, 1965. Oil on canvas/graphic, 158.8 x 159.0 cm. Art Gallery of Hamilton. Used with permission of the artist. *Sightlines* 14453.

■ 145. Lower left, Otto Rogers, 1935-____, Canada. *Sunset Stillness*, 1966. Oil on printed cotton canvas, 152.4 x 152.4 cm. Collection of the Mendel Art Gallery, Saskatoon. Used with permission of the artist.

■ 146. Upper right, Georgia O'Keeffe, 1887-1959, U.S.A. *Jack-in-the-Pulpit III*, 1930. Oil on canvas, 40" x 30". © O'Keeffe 1991 VIS*ART Copyright Inc.

■ 147. Lower right, Georgia O'Keeffe, 1887-1959, U.S.A. *Jack-in-the-Pulpit IV*. Oil on canvas, 40" x 30". © O'Keeffe 1991 VIS*ART Copyright Inc.

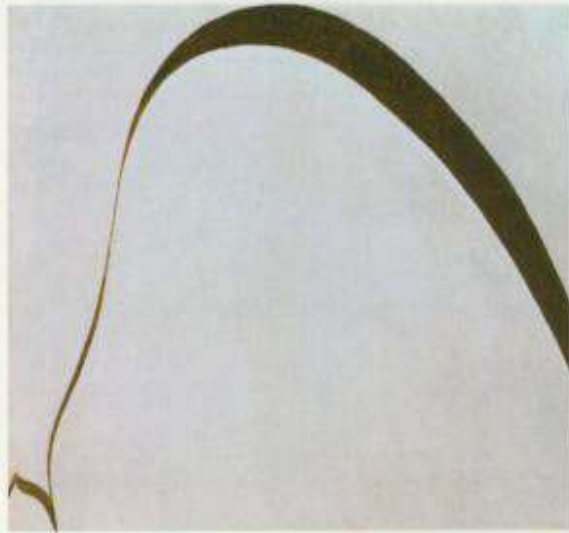




■ 148. Georgia O'Keeffe, 1887-1959, U.S.A. *Jack-in-the-Pulpit V*. Oil on canvas, 48" x 30". © O'Keeffe 1991 VIS*ART Copyright Inc.



■ 149. Georgia O'Keeffe, 1887-1959, U.S.A. *Red and Yellow Cliffs*, 1940. Oil on canvas, 24" x 36". © O'Keeffe 1991 VIS*ART Copyright Inc.



■ 150. Georgia O'Keeffe, 1887-1959, U.S.A. *Winter Road*. Oil on canvas, 22" x 18". © O'Keeffe 1991 VIS*ART Copyright Inc.

- 151. Upper left, Otto Rogers, 1935-____, Canada. *Light Above*, 1979. Acrylic on canvas, 152.0 x 168.0 cm. Rothman's of Canada. Used with permission of the artist.

- 152. Upper right, Georgia O'Keeffe, 1887-1959, U.S.A. *Light Coming on the Plains II*, 1917. Water colour, 12" x 19". Arnon Carter Museum, Fort Worth, Texas. Photograph by L. Lorenz. © O'Keeffe 1991 VIS*ART Copyright Inc.
- 153. Lower left, Jean Dominique Ingres, 1780-1867, France. *Oedipus and the Sphinx*, begun 1808, retouched for exhibition 1825. The Louvre, Paris. ART Resource, N.Y. *Sighlines* 2824.
- 154. Lower right, Joseph Mallord Turner, 1775-1851, Britain. *Rain, Steam and Speed*, 1843. *The Great Western Railway*. Oil, 35 3/4" x 48". Reproduced by Courtesy of the Trustees, National Gallery, London. (Photo Louis Lanieppe, Paris.)



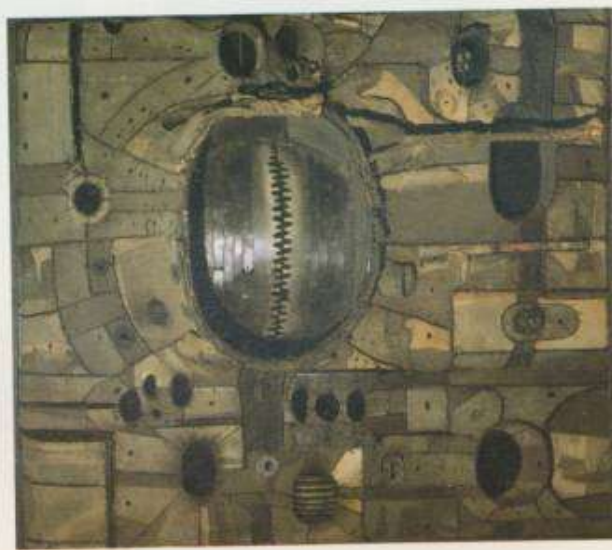


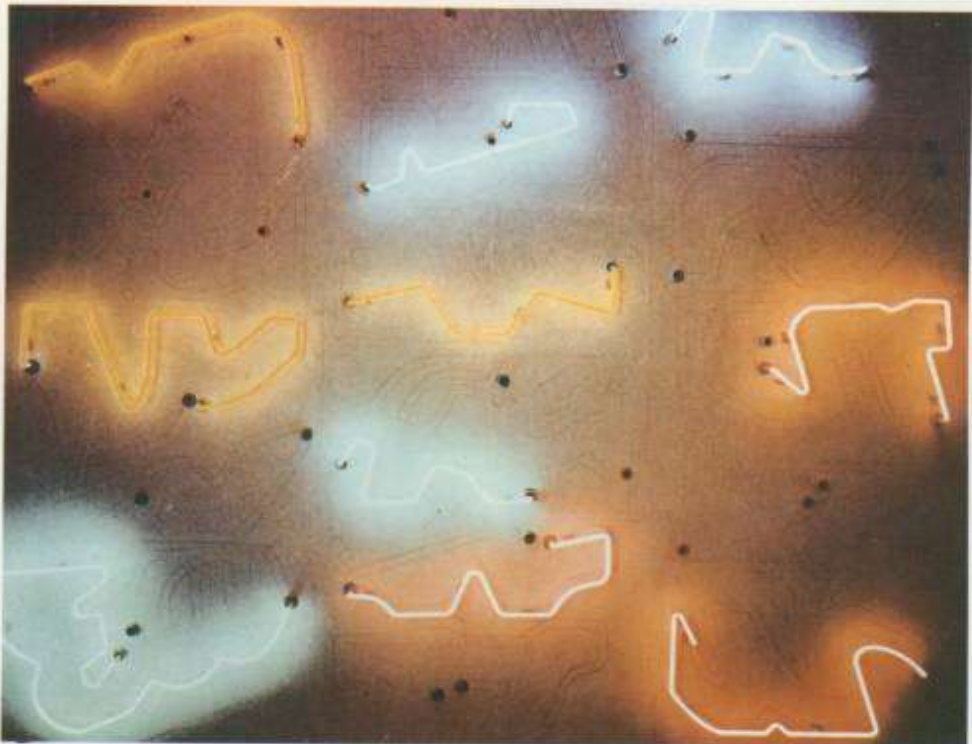
■ 155. Upper left. Giacomo Balla, 1871-1958, Italy. *Swifts: Paths of Movement, Dynamic Sequences*, 1913. Oil on canvas, 96.8 x 120 cm. Collection, The Museum of Modern Art, New York. Purchase. Sightlines 8994.

■ 156. Lower left. Lee Bontleou, 1931-____, U.S.A. *Untitled*, 1961. Welded metal and canvas, 182.9 x 168.3 x 66 cm. Collection of Whitney Museum of American Art, 61.41. New York. Reproduced with the permission of Whitney Museum of American Art. Photo by Geoffrey Clements.

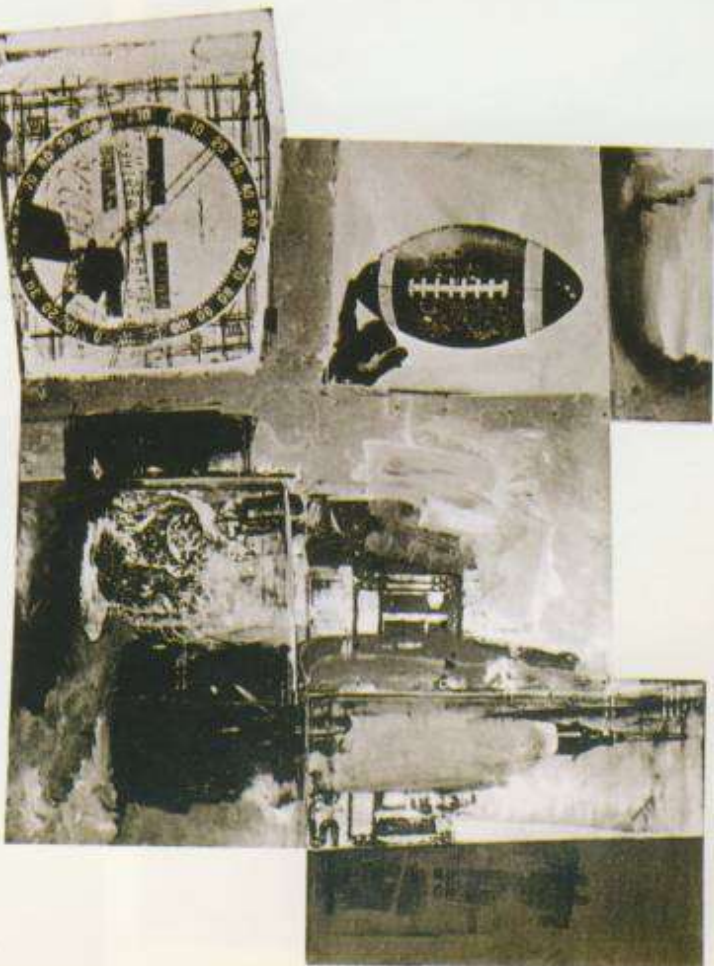
■ 157. Upper right. Judy Pfaff, 1946-____, Britain. *Apples and Oranges*, 1966. Mixed media, 287 x 488 x 183 cm. Collection, High Museum of Art, Atlanta, Georgia. Courtesy Holly Solomon Gallery, New York. With permission of the artist.

■ 158. Lower right. Sylvia Scott, 20 C, Canada. *Weather Report*, 1969. Mixed media, 112 x 112 x 30 cm. Courtesy of the Canada Council Art Bank.





■ 159. Chryssa, 1931-____, U.S.A. *That's All* (Centre Panel of Triptych), 1970-73. Neon, plexiglass, electrodes, asbestos, paper, 108 x 96 cm. The Metropolitan Museum, New York. Gift of Nathan Brody. © Chryssa 1991 VIS*ART Copyright Inc.



■ 160. Robert Rauschenberg 1925-____, U.S.A. *Junction*, 1963. Oil and silk screen ink on metal and canvas, 45 1/2" x 61 1/2". Collection of Christopher Rauschenberg. © Rauschenberg 1991 VIS*ART Copyright Inc.



a.



d.



g.



j.



b.



e.



h.



k.



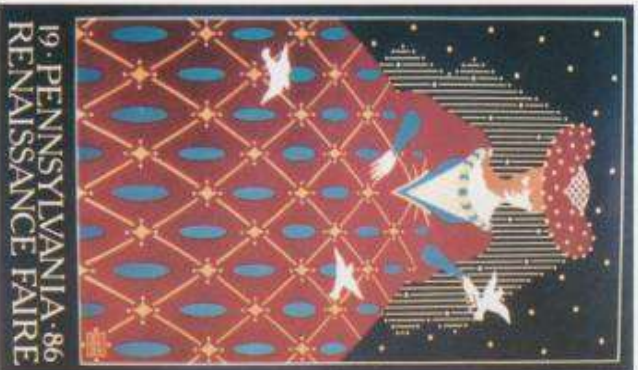
c.



f.



i.



■ 162. Pennsylvania Renaissance Poster, *Communication Arts Magazine*, November, 1987. Courtesy of Mazza Vineyards Inc.



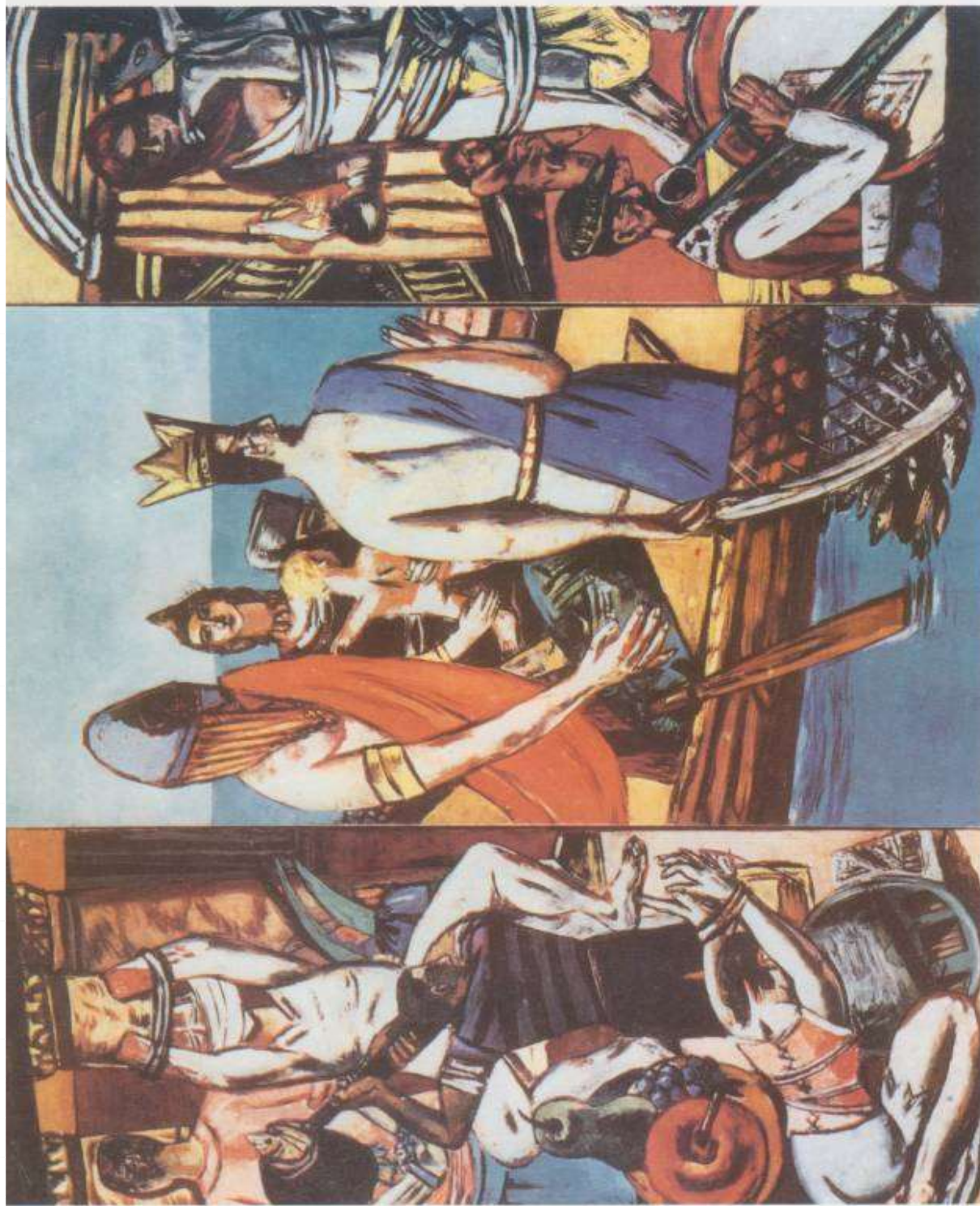
■ 163. Academy Theatre Poster, Italy, *Communications Arts Magazine*, November, 1987. Used with permission of *Communication Arts*.



■ 164. Brigham Young University Poster, *Communication Arts Magazine*, November, 1987. Permission given by Brigham University.



■ 165. Hollywood Legend and Reality Poster, *Communication Arts Magazine*, November, 1987. Used with permission of *Communication Arts*.



■ 166. Max Beckmann, 1884-1950, Germany. *Departure, 1932-33*. Triptych, oil on canvas, side panels each 84 3/4" x 39 1/4", Centre panel 84 3/4" x 45 3/8". Collection, The Museum of Modern Art, New York. Given Anonymously. © Beckman 1991 VIS'ART Copyright Inc.

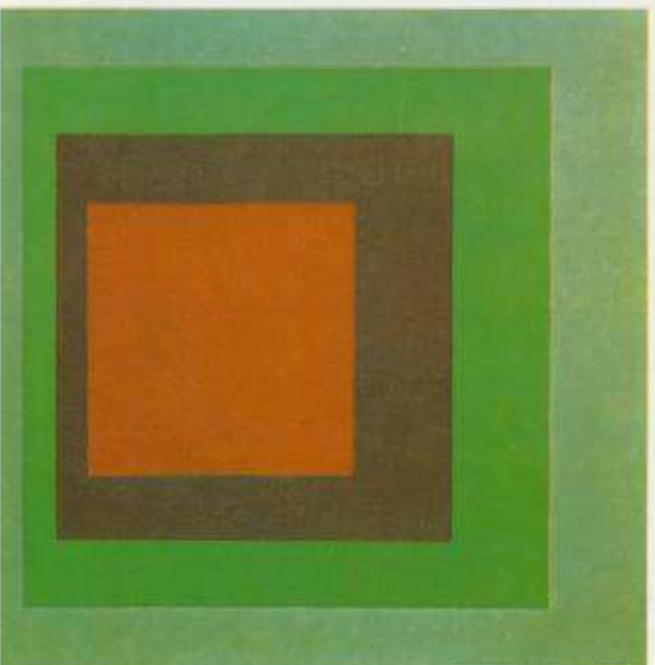


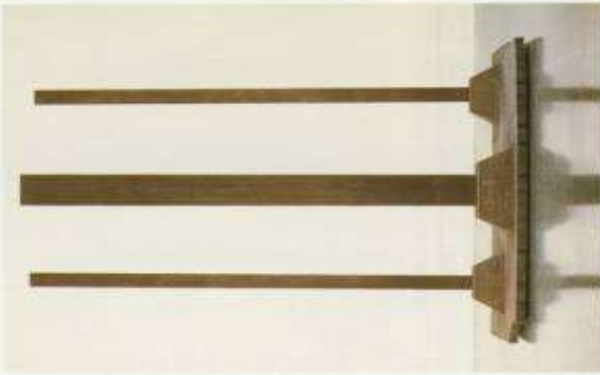
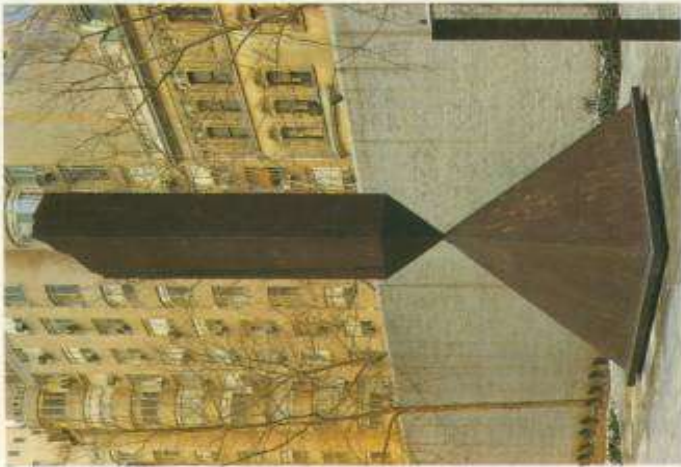
■ 167. Upper left, Enrico Prampolini, Italy. *Mussolini's Blackshirts*, 15 April, 1919, 1933. Mural for Mostra della Rivoluzione Fascista.

■ 168. Lower left, Josef Albers, 1888-1976, U.S.A. *Homage to the Square: Broad Call*, 1967. Oil on canvas board, 48" x 48". The Museum of Modern Art, New York. Janis Collection. © Albers 1991 VIS*ART Copyright Inc. Sightlines 8969.

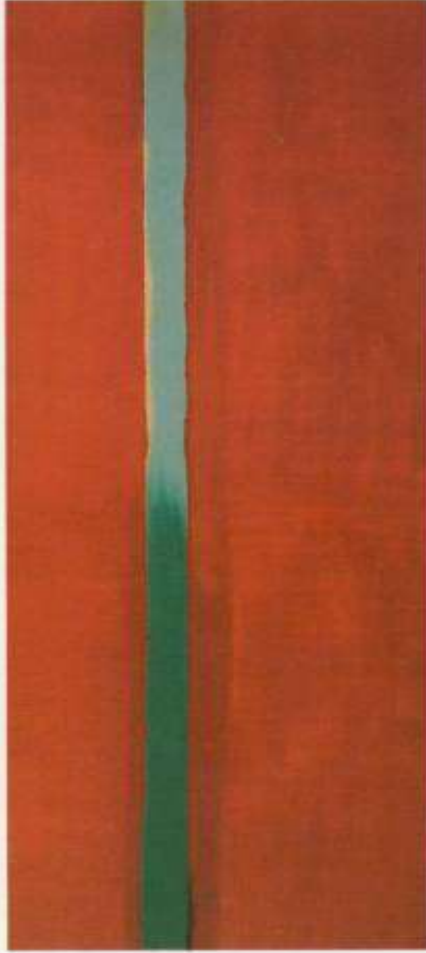
■ 169. Upper right, Josef Albers, 1888-1976, U.S.A. *Homage to the Square: Ascending*, 1953. Oil on composition board, 43 1/2" x 43 1/2". Whitney Museum of American Art, New York. © Albers 1991 VIS*ART Copyright Inc. Sightlines 10971.

■ 170. Lower right, Josef Albers, 1888-1976, U.S.A. *Homage to the Square: Curious*, 1963. Oil on canvas, 76 x 76 cm. Collection, R. Alistair McAlpine, London. © Albers 1991 VIS*ART Copyright Inc.





■ 173. Above. Barnett Newman, 1905-70, U.S.A. *Concord*, 1949. Oil on canvas. Collection of Mrs. Betty Parsons. Reproduced courtesy of Annalee Newman insofar as her rights are concerned. *Sightlines* 9496.

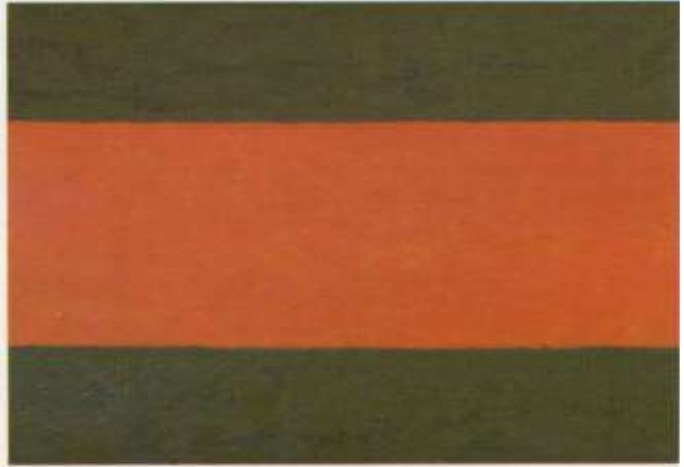


■ 171. Upper left. Barnett Newman, 1905-70, U.S.A. *Broken Obelisk*, 1963-69. Cor-ten steel, 774.5 x 320 x 320 cm. Collection, The Museum of Modern Art, New York. Reproduced courtesy of Annalee Newman insofar as her rights are concerned. *Sightlines* 11821.

■ 172. Upper center. Barnett Newman, 1905-70, U.S.A. *Here II*, 1965. Hot rolled cor-ten steel, 261.6 x 200.6 cm. National Gallery of Canada. Reproduced courtesy of Annalee Newman insofar as her rights are concerned. *Sightlines* 12773.

■ 174. Lower right. Barnett Newman, 1905-70, U.S.A. *Horizon Light*, 1949. Oil on canvas, 30" x 72". Collection of Mr. and Mrs. Thomas Sills, New York. Reproduced courtesy of Annalee Newman insofar as her rights are concerned. *Sightlines* 9495.

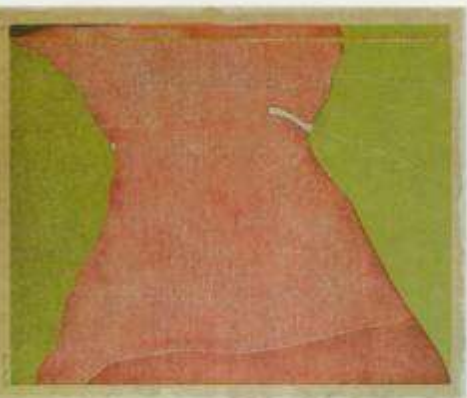
■ 175. Lower left. Barnett Newman, 1905-70, U.S.A. *The Way I*, 1951. Oil on canvas, 101.6 x 76.2 cm. National Gallery of Canada. Reproduced courtesy of Annalee Newman insofar as her rights are concerned. *Sightlines* 12774.





- 176. Above left. Helen Frankenthaler, 1928—, U.S.A. *Blue Territory*, 1955. Oil on canvas, 95" x 410". Collection, Whitney Museum of American Art, New York. Purchase, with funds from the Friends of the Whitney Museum of American Art. Copyright Helen Frankenthaler 1991. *Sightlines* 11164.

- 177. Above right. Helen Frankenthaler, 1928—, U.S.A. *Jacob's Ladder*, 1957. Oil on canvas, 95 3/8" x 59 7/8". Collection, The Museum of Modern Art, New York. Gift of Hyman N. Gluckstein. Copyright Helen Frankenthaler 1991. *Sightlines* 11165.



- 178. Above left. Helen Frankenthaler, 1928—, U.S.A. *Brown Moons*, 1961. Lithograph (from two stones), Edition 23. Published by Universal Limited Art Editions. Collection, The Museum of Modern Art, New York. Gift of Celeste and Armand Bartos Foundation. Copyright Helen Frankenthaler/UJAE 1991. *Sightlines* 8818.

- 179. Above right. Helen Frankenthaler, 1928—, U.S.A. *Canal*, 1963. Acrylic on canvas, 6'9" x 4'9 1/2". Solomon R. Guggenheim Museum, New York. Purchased with the aid of funds from The National Endowment for the Arts, in Washington, D.C., a Federal Agency, matching gift, Evelyn Sharp, 1976. Photograph by David Heald. Copyright Helen Frankenthaler 1991. *Sightlines* 9212.

- 180. Lower left. Helen Frankenthaler, 1928—, U.S.A. *Savage Breeze*, 1974. Woodcut (from eight blocks), Edition: 31. Published by Universal Limited Art Editions. Collection, The Museum of Modern Art, New York. Gift of Celeste Bartos. Copyright Helen Frankenthaler/UJAE. *Sightlines* 10821.

- 181. Lower centre. Helen Frankenthaler, 1928—, U.S.A. *Flood*, 1963. Acrylic on canvas, 10'4" x 11'8". Collection, Whitney Museum of American Art. Copyright Helen Frankenthaler 1991. *Sightlines* 9214.

- 182. Lower right. Helen Frankenthaler, 1928—, U.S.A. *Yellow Clearing*, 1963. Oil on canvas, 4'5 1/2" x 5'9 1/2". Private Collection, New York. Copyright Helen Frankenthaler, 1991. *Sightlines* 9213.



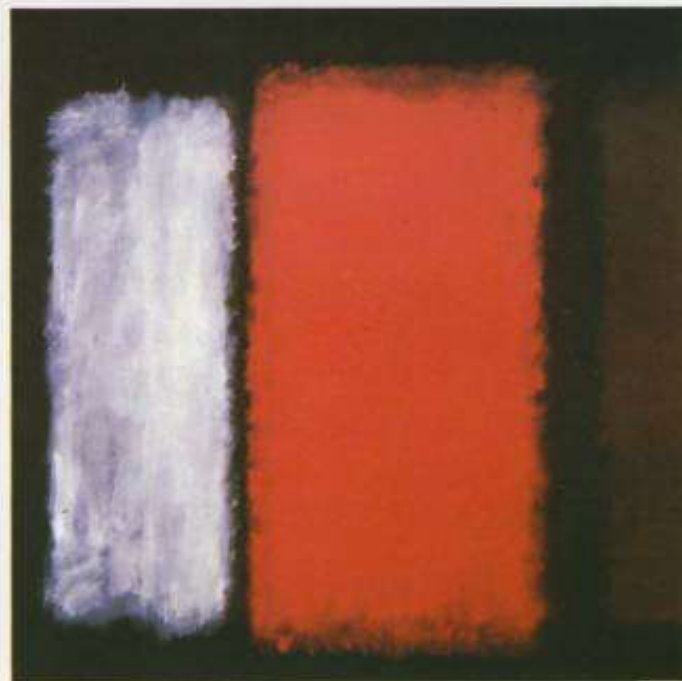
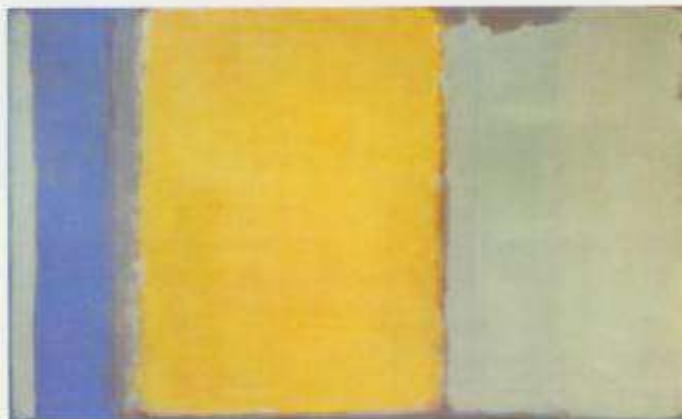


■ 183. Upper left. Mark Rothko, 1903-70, U.S.A. *Magenta, Black, Green on Orange*, 1949. Oil on canvas, 86" x 65". Collection, The Museum of Modern Art, New York. Bequest of Mrs. Mark Rothko through the Mark Rothko Foundation. Copyright 1991 Christopher Rothko and Kate Rothko-Prizel/ARS, New York. *Sightlines* 11409.

■ 184. Lower left. Mark Rothko, 1903-70, U.S.A. *No. 1, White and Red*, 1957. Oil on canvas, 259.1 x 228.6 cm. Art Gallery of Ontario. Copyright 1991 Christopher Rothko and Kate Rothko-Prizel/ARS New York. *Sightlines* 12822.

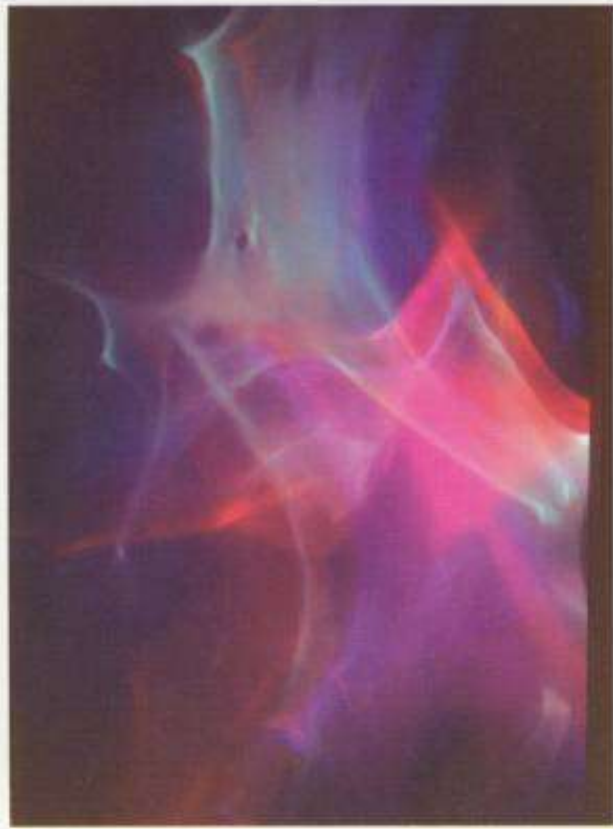
■ 185. Upper right. Mark Rothko, 1903-70, U.S.A. *Tan and Black on Red*, 1957. Oil on canvas, 69" x 53". Collection of Mr. and Mrs. I.D. Grossman, New York. Copyright 1991 Christopher Rothko and Kate Rothko-Prizel/ARS New York. *Sightlines* 11408.

■ 186. Lower right. Mark Rothko, 1903-70, U.S.A. *Number 10*, 1950. Oil on canvas, 90" x 57". Collection, The Museum of Modern Art, New York. Gift of Philip Johnson. Copyright 1991 Christopher Rothko and Kate Rothko-Prizel/ARS New York. *Sightlines* 11407 and 11410.

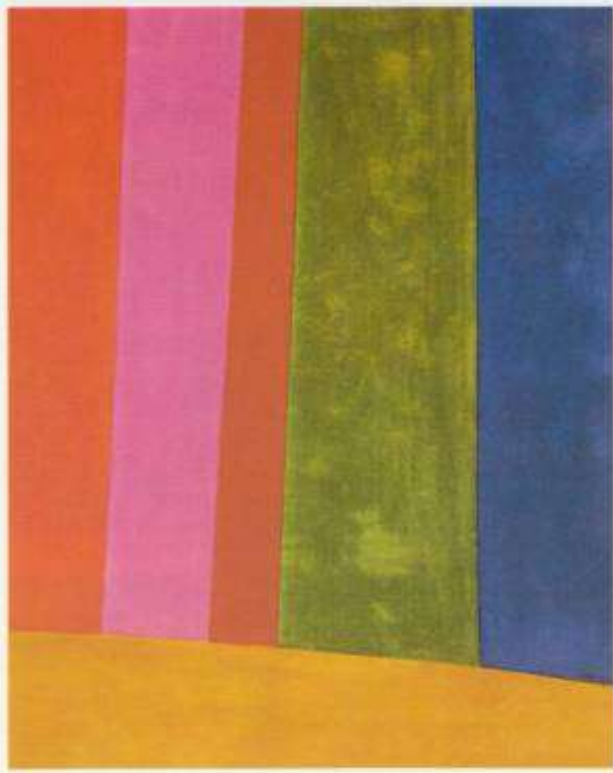


187. (l eft to r ight) Mark Rothk n, 1909-70 U.S.A. The Rothk n Chancel Northwest North and Northwest wall sculpture in the Rothk n Chancel 1909-70 Rothk n Chancel and





■ 188. Thomas Wilfred. *Third Movement*. elliptical from *Lumia Suite*, Op. 158, 1963-64. Lumia composition (projected light on translucent screen). Three movements, lasting 12 minutes, repeated continuously with almost endless variations. Screen, 6' x 8' (182.8 x 243.2 cm). Collection, The Museum of Modern Art, New York. Commissioned by the Museum through the Mrs. Simon Guggenheim Fund.



■ 189. Jack Bush, 1907-1977, Canada. *Dazzle Red*, 1965. Oil on canvas, 206 x 264 cm. Art Gallery of Ontario. Reproduced by permission of the Jack Bush Estate. Copyright 1990. © Bush 1991 VIS*ART Copyright Inc.



■ 190. Lower left. Gul
1932-____, Canada.
Orange-Vert, 1967.
canvas, 203 x 363 c
National Gallery of C
© Molinari 1991 Vis
Copyright Inc.

■ 191. Lower right. M
Snow, 1929-____, Ca
Lac Clair, 1960. Oil
on canvas, 178 x 17
National Gallery of C
Ottawa. © Snow 19
VIS*ART Copyright





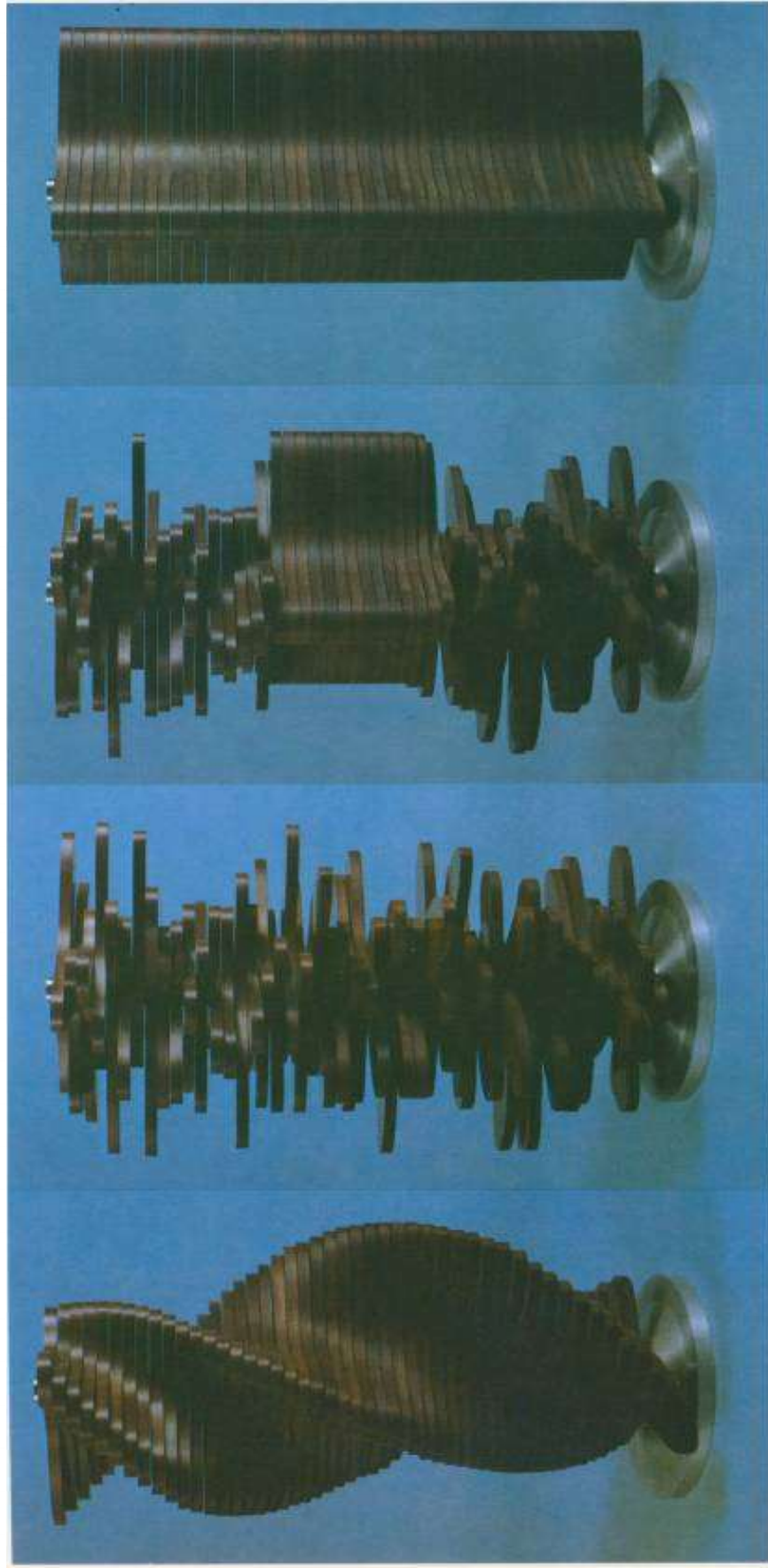
■ 192. Upper left: Victor Vasarely, 1908-1963, Hungary. *Kalota*, 1963. Oil on canvas, 7' x 6'8". The Museum of Modern Art, New York. © Vasarely 1991 VIS*ART Copyright Inc.

■ 193. Upper right: Victor Vasarely, 1908-1963, Hungary. *Vega-Krontosh-Va*, 1971. Tempera on panel, 65 x 65 cm. Los Angeles County Museum of Art. Gift of Mr. and Mrs. Donald Winston through the Contemporary Art Council. Copyright © 1991 Museum Associates, Los Angeles County Museum of Art. All Rights Reserved. © Vasarely 1991 VIS*ART Copyright Inc.

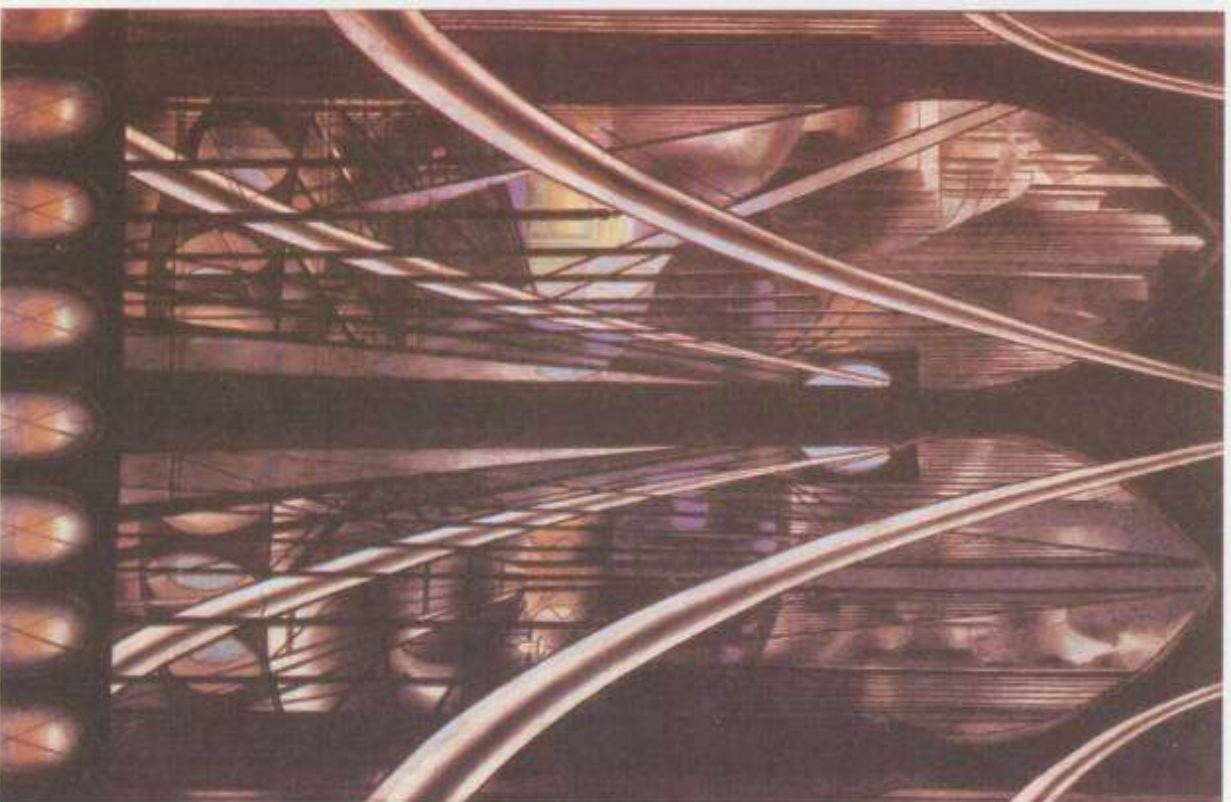
■ 194. Lower left: Bridget Riley 1931-1991, England. *Orphean Elegy I*, 1978. Aquatint on linen, 55 1/4" x 51 1/4". British Council, London. Reproduced with the permission of the artist.

■ 195. Lower right: Joseph Stella, 1880-1946, U.S.A. *Battle of Lights, Coney Island*, 1914. Oil on canvas, 76" x 84 1/2". Yale University Art Gallery. Gift of Collection Societe Anonyme. © Stella 1991 VIS*ART Copyright Inc.





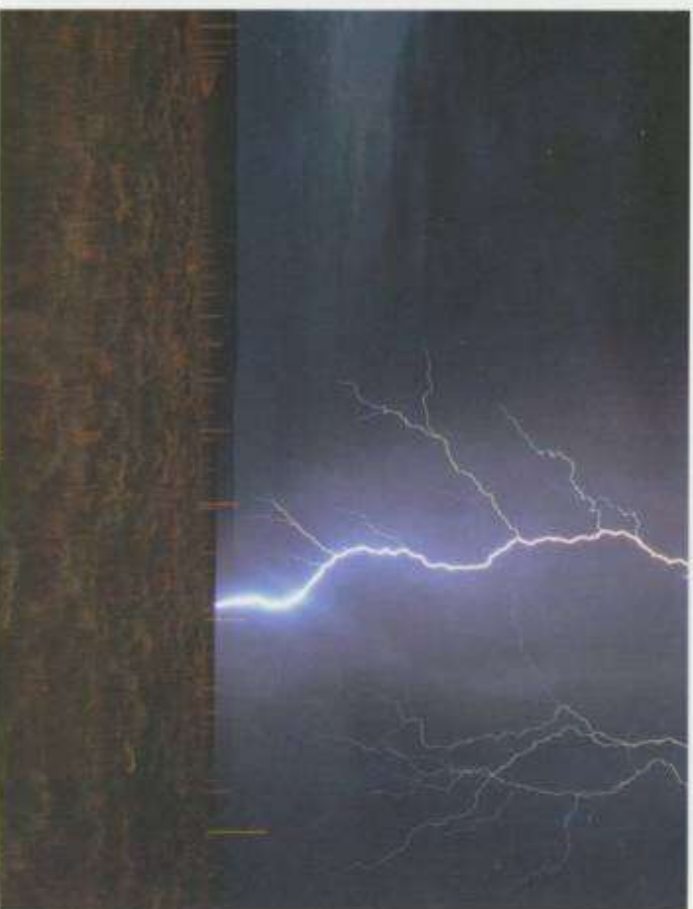
■ 196. Ulysse Comtois, 1931-____, Canada. *Colonne*, 1968. Phenolic laminate and aluminum plate, 70 cm high. Photo Mira Godard Gallery, Toronto. Courtesy, The Bank of Nova Scotia Fine Art Collection.



■ 197. Joseph Stella, 1880-1946, U.S.A., *New York Interpreted V: The Bridge*, 1922. Oil on canvas, 88 1/2" x 54 1/4". Newark Museum. © Stella 1991
VIS*ART Copyright Inc. C081100011450

■ 198. Upper Right. Chryssa, 1933-____, U.S.A., *Amperсанд III*, 1966. Neon lights in Plexiglass, height 30 1/4". Robert E. Abrams Family Collection. © Chryssa 1991 VIS*ART Copyright Inc.

■ 199. Lower right. Walter De Maria, 1935-____, U.S.A., *The Lightning Field*, 1977. A permanent earth sculpture. One mile x one kilometre, 400 stainless steel poles, with solid stainless steel pointed tips, arranged in a rectangular array (16 poles wide x 25 poles long) spaced 220 feet (67.05 metres) apart. Pole tips form an even plane. Average pole height is 20 feet 7 inches (6.27 metres). Work must be seen over a 24 hour period. All reproduction rights reserved. © Dia Art Foundation 1980. Photographer: John Ciletti.





■ 200. Harold Cohen, 1928-____, Britain. *Colored Drawing*. 1982. 20" x 30". Photographer Becky Cohen. Reproduced with permission of the artist.



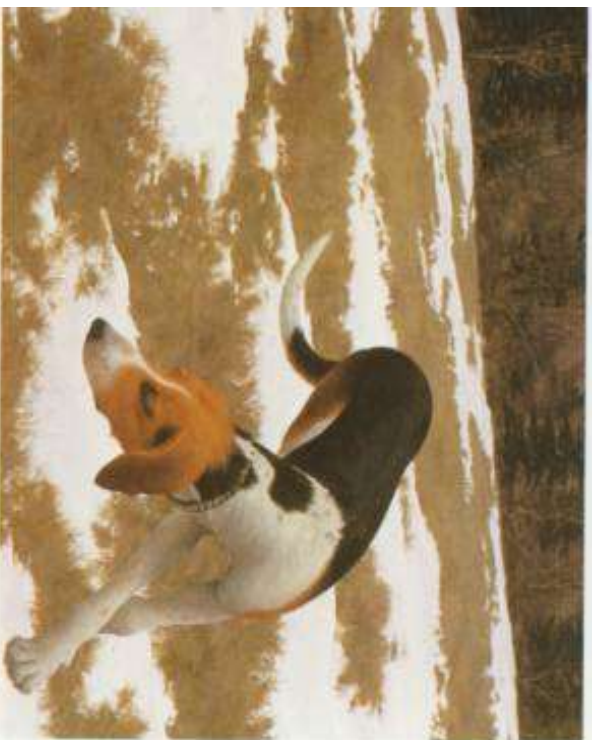
■ 201. Ashevak Kenojuak, 1927-____, Canada. *Spirit of the Raven*, 1979. Stone cut and stencil. 61 x 74 cm. Reproduced with the permission of the West Baffin Eskimo



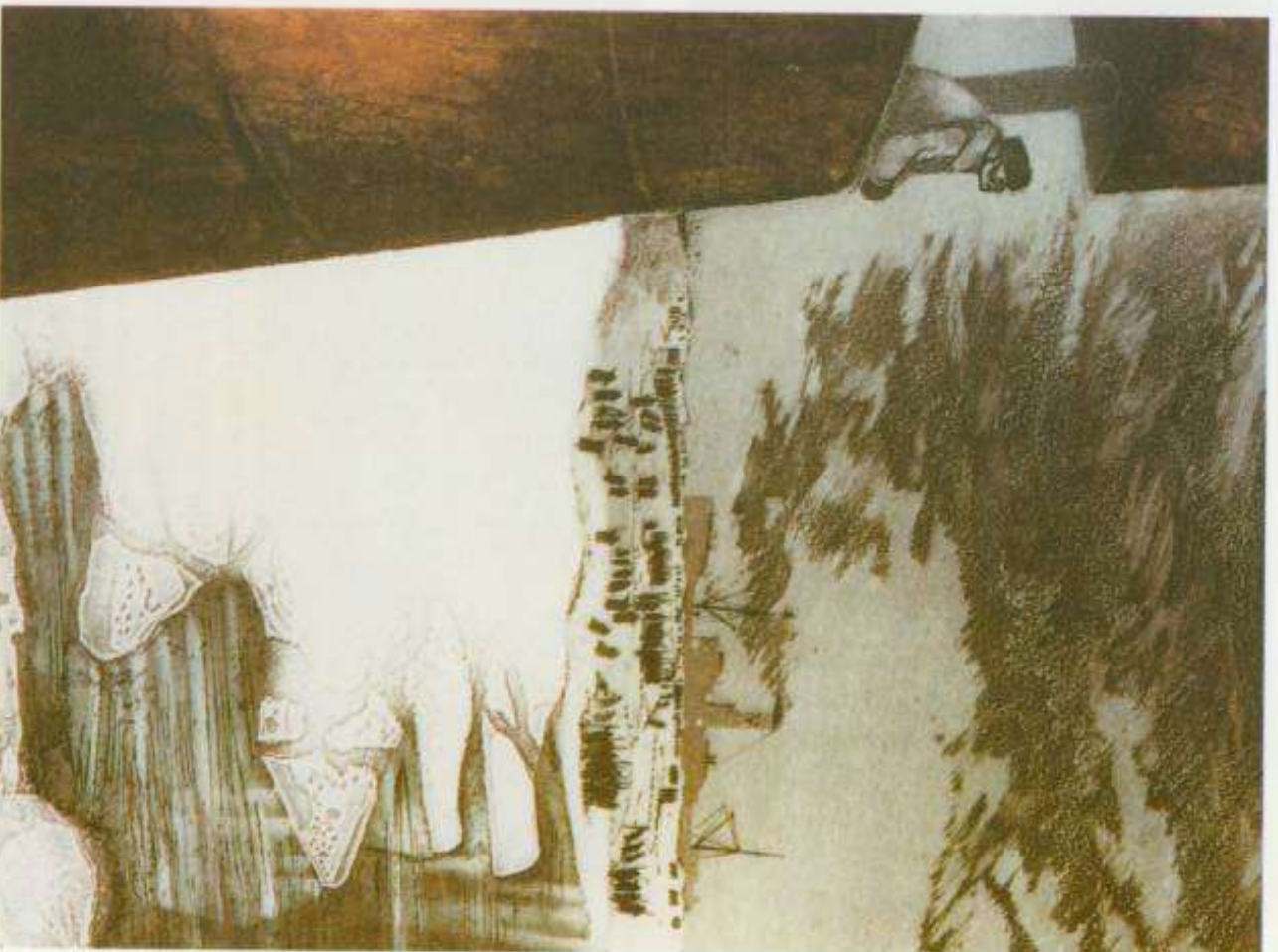
■ 202. Norval Morrisseau, 1923-____, Canada. *Windigo*, c 1964. Tannera on brown paper. 157.5 x 81.3 cm. Courtesy of the



■ 203. Tom Thomson, 1877-1917. Canada. *The Jack Pine*, 1916-1917. Oil on canvas, 127.9 x 139.8 cm. National Gallery of Canada, Ottawa. *Signatures* 14595.



■ Colville, 1920-____. Canada. *Hound in Field*, 1958. Tempera on wood panel, 101.5 cm. National Gallery of Canada, Ottawa. © Colville 1991



■ 204. David Blackwood, 1941-____. Canada. *S.S. Imogene with Crew on Ice*, 1967. Etching, 75 x 50 cm. Masters Gallery Ltd. Calgary. *Reproduction of this article*



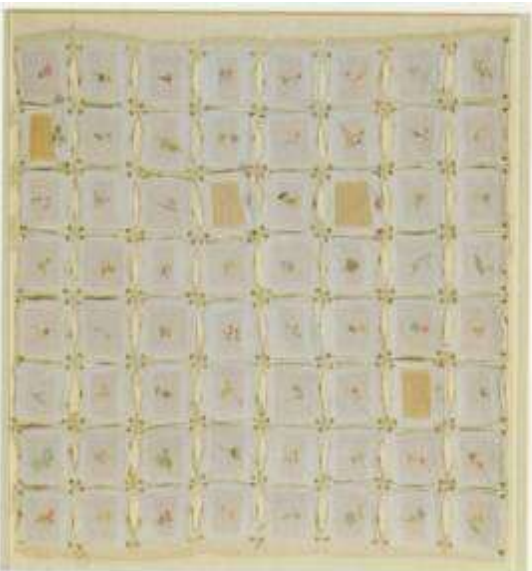
■ 206. Emily Carr, 1871-1945, Canada. *Forest, British Columbia*. Oil on canvas. Vancouver Art Gallery. Photo National Film Board.



■ 207. Emily Carr, 1871-1945, Canada. *Forest Landscape I*. Oil on paper, 91.4 x 61.0 cm. Art Gallery of Ontario. Sightlines 14886.



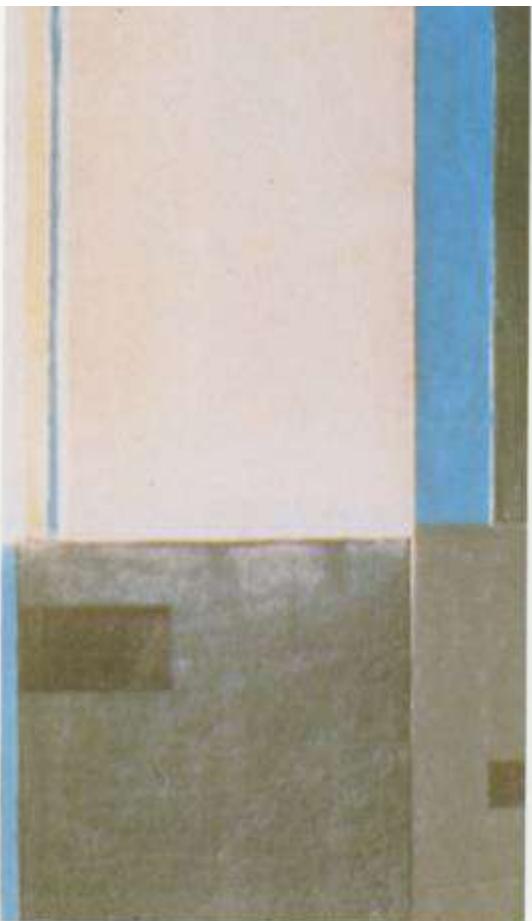
■ 208. William Kurelek, 1927-77, Canada. *Railway Gang in British Columbia*, 1977. From series, *Polish Canadians*. Mixed media on masonite-graphic, 70.8 x 50.5 cm.



■ 209. Joyce Wieland, 1931-____, Canada. *The Water Quilt*, 1970. 64 individual embroidered kapok pillows, 121.8 x 121.8 cm. Art Gallery of Ontario. © Wieland 1991 VIS*ART Copyright Inc. *Sightlines* 14734.



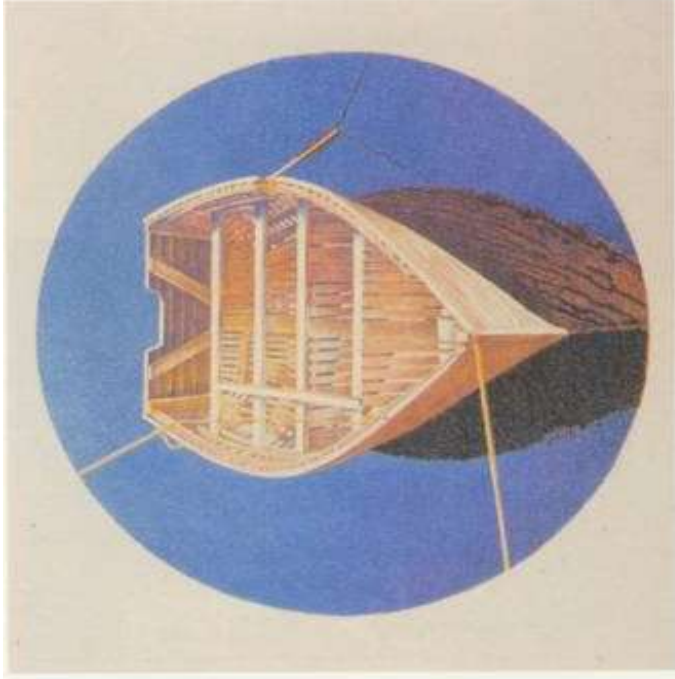
■ 211. Takao Tanabe, 1926-____, Canada. *On the Road to Banff*, 1982. Acrylic, 71.8 x 109.5 cm. Alberta Art Foundation. Reproduced with permission of the artist. *Sightlines* 16749.



Nicoll, 1909-84. Canada. *Prairie Farm*, Collagraph. Alberta Art Foundation. by Janet Mitchell, Executor for the Estate of Marion Nicoll. *Sightlines* 16502.



■ 212. Gordon Smith, 1919-____, Canada. *West Coast #1*, 1974. Acrylic, 152.4 x 182.9 cm. Art Gallery of Ontario. Used with



- 213. Upper left. Patterson Ewen, 1925-____, Canada. *Moon Over Tabernory*, 1981. Acrylic/metal/gouged plywood, 243.8 x 335.89 cm. National Gallery of Canada. Sightlines 13407.
- 214. Upper right. Mary Pratt, 1935-____, Canada. *Tied Boat*, 1980. Original colour lithograph/coloured pencil, 39.7 x 43.4 cm. Art Gallery of Ontario. With permission of the artist. Sightlines 15296.
- 215. Lower left. Maureen Enns, 1943-____, Canada. *Flower Box*. Acrylic on canvas, 118.1 x 150.0 cm. Alberta Art Foundation. With permission of the artist. Sightlines 15813.





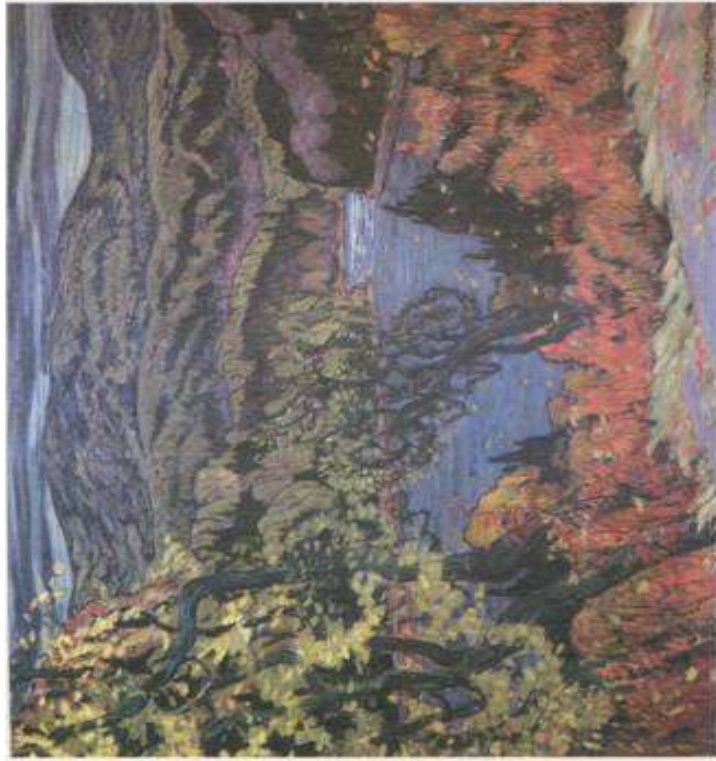
■ 216. Jack Shadbolt, 1909-____. Canada. *Transformations 4*, 1976-77. Mixed/board/triptych/graphic, 152.7 × 101.5 cm. Art Gallery of Hamilton. © Shadbolt 1991 VIS-ART Copyright Inc. *Signiflines* 14511.



■ 217. Janet Mitchell, 1915-____. Canada. *People of the Street*, 1970. Watercolour/paper, 56.0 × 77.0 cm. Alberta Art Foundation. With permission of the artist. *Signiflines* 16398.



■ 218. Alfred Pellán, 1906-1988, Canada. *Floraison*, c 1946. Oil on canvas, 180.4 × 146.1 cm. National Gallery of Canada. By permission of Madeleine Pellán. *Signiflines* 14343.



■ 219. J.E.H. MacDonald, 1873-1932, Canada. *Autumn in Algoma*, 1921. Oil on canvas, 120.7 x 151.1 cm. National Gallery of Canada. Sightlines 14126.



■ 220. Annemarie Schmid Esler, 1937-____, Canada. *Mountain Sleeping*. Ceramic. Courtesy of the artist.



■ 221. Dorothy Knowles, 1927-____, Canada. *Summer Day*, 1969. Acrylic on canvas, 142.2 x 184.4 cm. Collection of the Edmonton Art Gallery. Courtesy of the artist, Dorothy Knowles. *Sightlines* 13969.



■ 222. Don Proch, 1944-____, Canada. *Manitoba Mining Mask*, 1976. Silverpoint and graphite on fiberglass and bone construction, 58 cm high. University of Saskatchewan, Saskatoon. Reproduced with the permission