

Unit 3: Section 2

Immigration to Canada Activity

Introduction

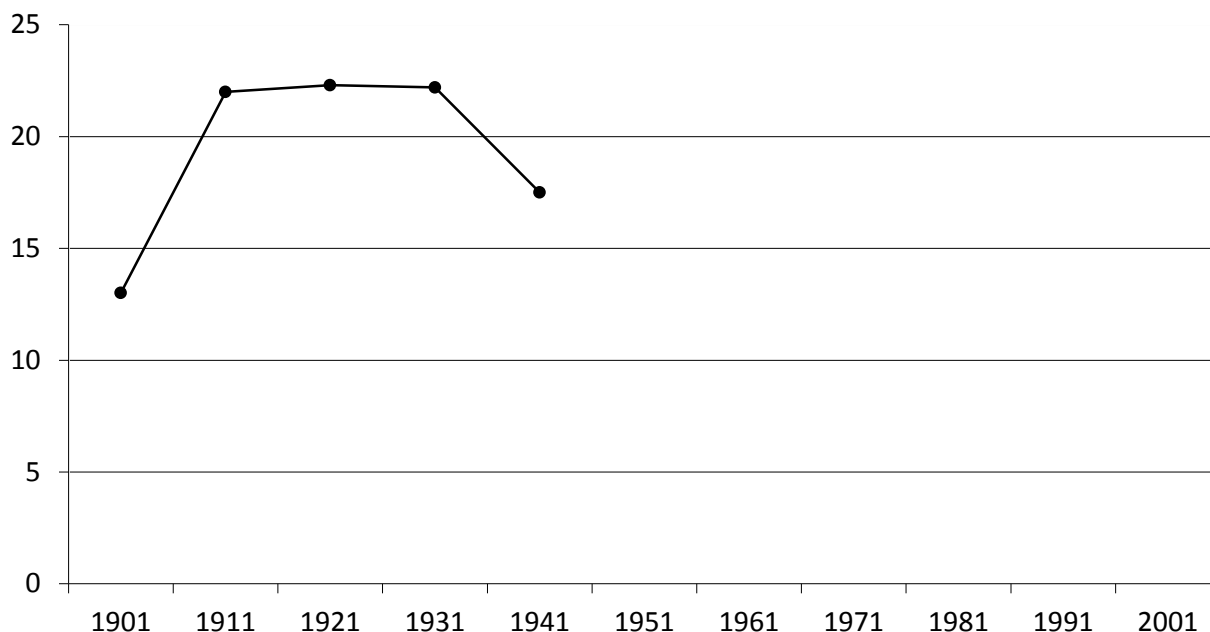
The immigrant population of Canada consists of people who were born in other countries and have been granted the right to live permanently in Canada. Many of these people immigrated many years ago; others have come more recently. The figures from the 2001 Census add to the profile of immigration patterns in Canada that have been built over the years.

In this activity, you will be graphing some immigration statistics. **To complete the activity, follow the instructions at the beginning of each graph.**

Graph 1

The census takes a snapshot of the population at a certain time. The graph below tells us that 13% of the population enumerated in the census of 1901 were immigrants. The remaining 87% of the population were born in Canada. **Use the data found in the chart on the following page to graph the immigration statistics for at least four other census years.** This will allow you to see how the trends in immigration into Canada have fluctuated over the century.

Immigrants as a percentage of the total population, 1901-2001

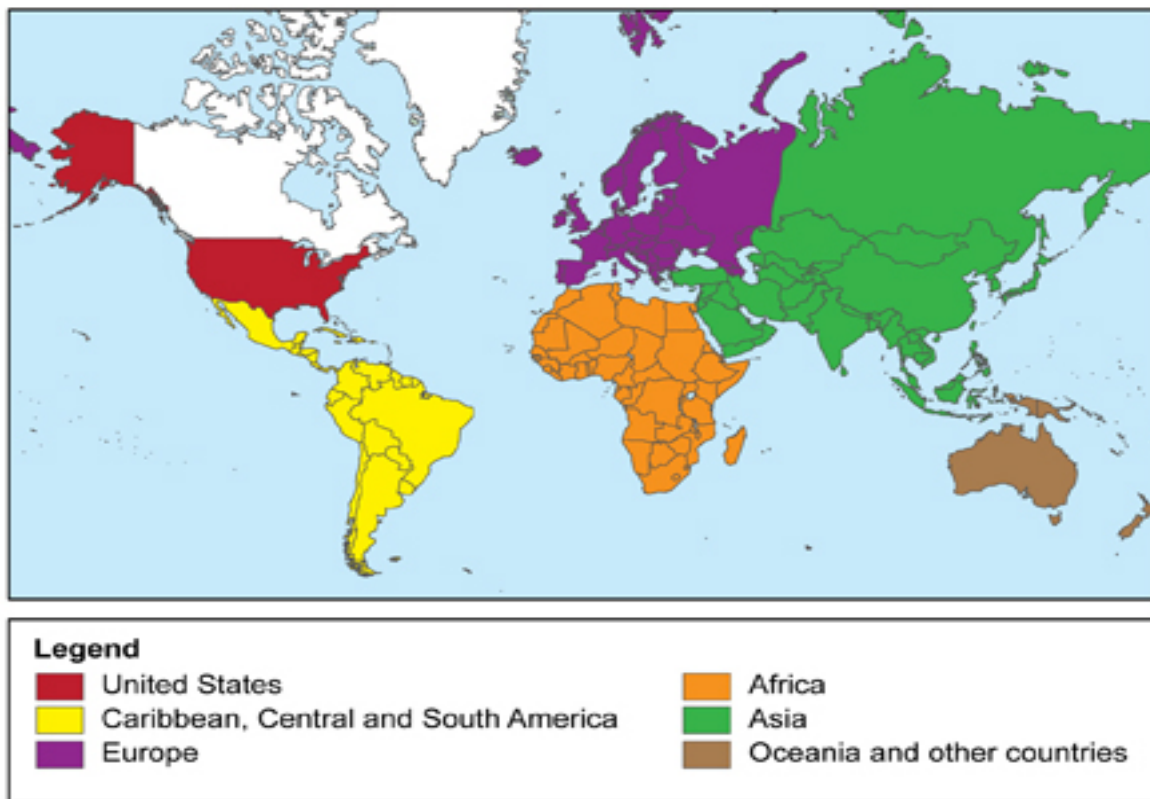


Census Year	Percentage of Immigrants in the Total Population
1901	13,0
1911	22,0
1921	22,3
1931	22,2
1941	17,5
1951	14,7
1961	15,6
1971	15,3
1981	16,0
1991	16,1
2001	18,4

Source: Adapted from *Statistics Canada*, <http://www12.statcan.ca/english/census01/teacher%27s_kit/activity10_chart1.cfm>. 2 June 2009.

Graph 2

The people who have immigrated to Canada have originated from many countries all over the world. Statistics Canada has arranged these countries by source areas. You can see these different source areas on the following map.



Adapted from *Statistics Canada* <http://www12.statcan.ca/english/census01/teacher%27s_kit/activity10_map.cfm>. 2 June 2009

The following chart shows data relating to the various source areas of immigrants to Canada, which you have just seen on the map, during six time periods.

Place of Birth	Total	pre-1961	1961-1970	1971-1980	1981-1990	1991-2001
1. United States	4,4	3,9	6,3	6,7	4,0	2,8
2. Europe	42,0	90,5	69,2	36,2	25,6	19,5
3. Asia	36,5	3,2	12,1	33,3	47,2	58,2
4. Africa	5,2	0,5	3,2	5,8	5,7	7,6
5. Caribbean, Central and South America	11,0	1,4	8,0	16,5	16,5	10,9
6. Oceania and other countries	1,0	0,4	1,2	1,5	1,0	0,8

Adapted from *Statistics Canada* <http://www12.statcan.ca/english/census01/teacher%27s_kit/activity10_table2.cfm>. 2 June 2009.

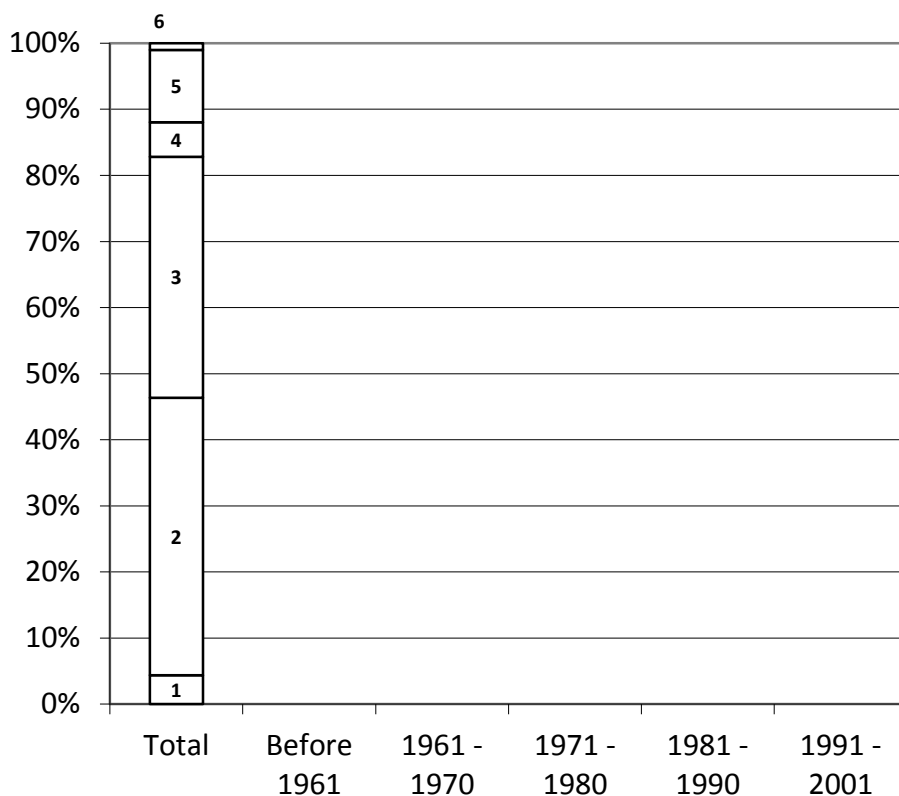
Use the data from the above chart to complete the following graph. The stacked column on the following graph shows the places of birth of all the people who have ever immigrated to Canada.

Colour the various segments of the graph. Use the same colours used in the world map: **red** for United States; **yellow** for Caribbean, Central and South America; **purple** for Europe; **orange** for Africa; **green** for Asia; and **brown** for Oceania and other countries. This column will serve as the legend for the rest of the graph.

Now, again using the data in the chart above, construct the next **five** columns to show the trend for place of birth of each of the remaining time periods listed. Again, colour the segments of the columns according to the legend you have just created. You do not have to include numbers in the segments of your columns.

After you have finished your graph, take note of how the proportions of immigrants from the various areas have fluctuated over time.

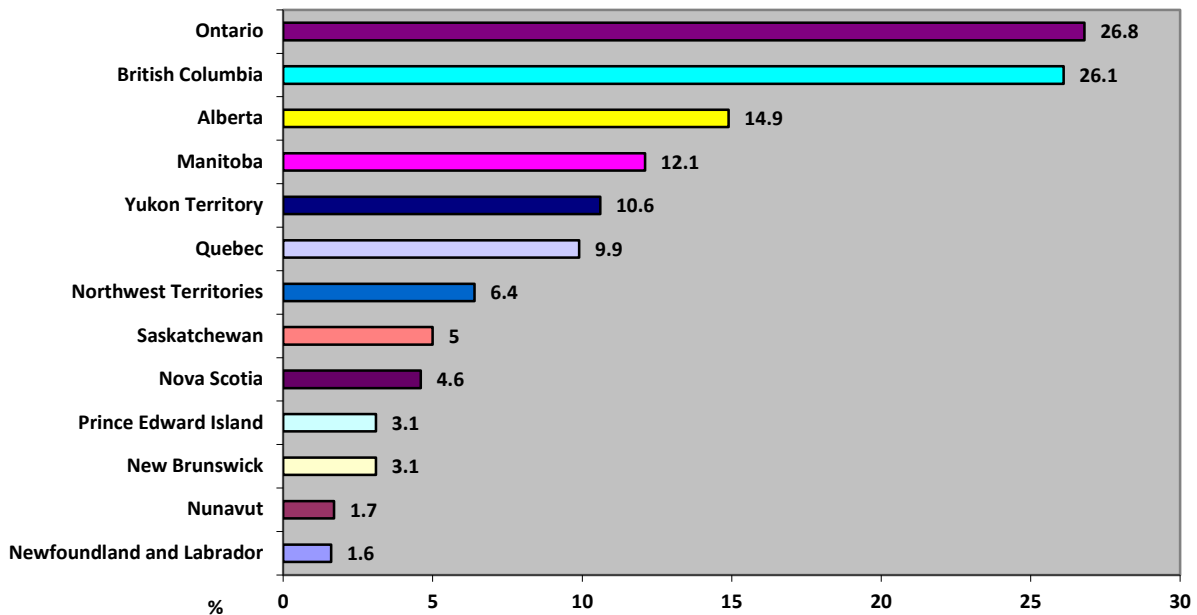
Immigrant population by place of birth and period of immigration



Graph 3

Consider some more specific regions of Canada. In the next two graphs, you will see that immigrants have tended towards certain provinces more than others. The following graph, which has been completed for you, shows the specific figures for each province and territory. Ontario leads with 26.8% of its residents having immigrated from other countries. **What percentage of the total population of your province or territory represents immigrants to Canada?**

Immigrants as a percentage of total provincial population, 2001



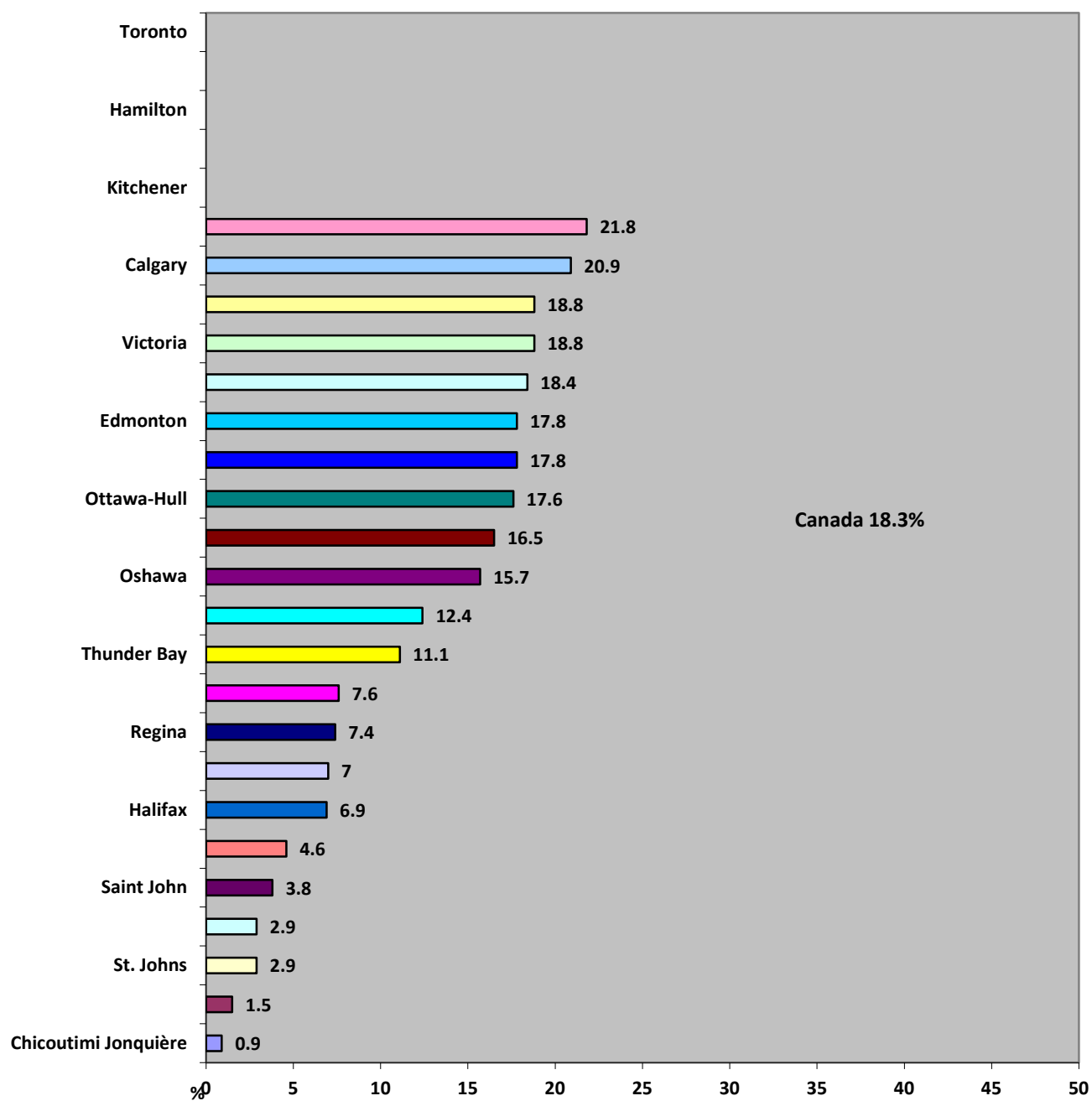
Source: Statistics Canada <http://www12.statcan.ca/english/census01/teacher%27s_kit/activity10_chart3.cfm>. 2 June 2009.

Graph 4

The following graph shows statistics for census metropolitan areas (CMAs). Immigrants have been more attracted to some of these large urban centres than to others. **Use the data from the 2001 Census below to fill in the missing bars to complete the graph.**

CMA	Percentage of total CMA population
Toronto	43.7%
Vancouver	37.5%
Hamilton	23.6%
Windsor	22.3%
Kitchener	22.1%

Immigrants as a percentage of total CMA population, 2001



Adapted from Statistics Canada <http://www12.statcan.ca/english/census01/teacher%27s_kit/activity10_chart4.cfm>. 2 June 2009.

Save your work to your **Activities** folder.

Source: Adapted from Statistics Canada, http://www12.statcan.ca/english/census01/teacher%27s_kit/teacher%27s_guide.cfm, 2 June 2009.

Statistics Canada information is used with the permission of Statistics Canada. Users are forbidden to copy this material and/or disseminate the data, in an original or modified form, for commercial purposes, without the expressed permission of Statistics Canada. Information on the availability of the wide range of data from Statistics Canada can be obtained from Statistics Canada's Regional Offices, its World Wide Web site at <http://www.statcan.gc.ca>, and its toll-free access number 1-800-263-1136.