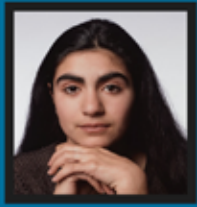


Sabah's 2.3 Text-to-Self Comparison



NOTE: Remember that this paragraph is for example purposes only. Sabah responded to the question "What roles do success and failure play in the pursuit of living well?" for this assignment. You are responding to the question about integrity. Notice how she incorporates both a personal example from her own life and textual evidence from one of the stories using the I.C.E. method.

I (Introduce your evidence) is in purple.

C (Cite your evidence) is in blue.

E (Explain your evidence) is in green.

The successes and failures of our role models play an important role in our own pursuit of living well because we learn how to live based on the behaviours of the people we look up to. Our parents, our teachers, our coaches, famous sports figures or movie stars – these are all people who influence the way we, as children, learn to behave. They are adults in positions of power, and particularly when we're children, we think this means these grown-ups must know the answers about how to live well.

Take writer and professor Dr. Jim Parsons, for example. In his true story called "Every Person Gets Their Due— Especially on Christmas Eve: Unforgettable Memories of a Father's Values," he discusses the importance of his father's actions on how he himself decided to live his life and the values he wanted to have. Parsons writes about how his father trudged through a terrible snowstorm when he realized the family car was out of gas and he might not be able to get his children home in time for Santa Claus to come on Christmas Eve (p. 3). The gas station was closed, being Christmas Eve, so he had to ask the owner to open the station so he could get some gas, and because he wanted to make sure the owner received as much money as possible for his trouble, Parson's father filled up a 5-gallon gas can all the way to the top, even though that would have made the can very heavy to carry (p. 3). This was the kind of man Parsons' father was. "The struggle up the hill with the gas can was the price one paid to live well. As the eldest of the family left alive, this family mythology lives in my bones and I hope in my actions. I still carry with me the values of that Christmas Eve night, sometimes as heavily as my father carried that gas up that hill in the deep snow" (p. 3). Parsons was obviously deeply influenced by his role model's actions and the strong values his father had. Because his father showed him what it meant to be a good person, Parsons had a clear road map to follow.

Your topic sentence answers the assignment question and adds a "because" clause to make it more effective. Nice work!

Here you elaborated a on your topic sentence by explaining the topic sentence in a bit more depth. Well done.

Here you gave the credentials of the person to show the evidence is legitimate, and then used a signal phrase to introduce the evidence in a smooth way. This is the **(I)**ntroduce in I.C.E.

You cited the page number on which the evidence was located. This gives proper credit to your source, the **(C)**ite in I.C.E.

Here you showed how the details and quotations from the story proved the topic sentence, making the evidence even more convincing. That's the **(E)**xplain in I.C.E.

Sabah's 2.3 Text-to-Self Comparison



NOTE: Remember that this paragraph is for example purposes only. Sabah responded to the question "What roles do success and failure play in the pursuit of living well?" for this assignment. You are responding to the question about integrity. Notice how she incorporates both a personal example from her own life and textual evidence from one of the stories using the I.C.E. method.

I (Introduce your evidence) is in purple.

C (Cite your evidence) is in blue.







E (Explain your evidence) is in green.

Just like with Jim Parsons, one of the adults in my life taught me a lot about the role of success in living well, but in my case, my so-called role model showed me what *not* to do. I had a softball coach my first year on the team, and his only goal was for our team to win. He would encourage us to play even when we were injured or sick, and if we missed a run or struck out during a game, he would get red in the face and throw down his clipboard. He very rarely complimented us on our playing unless it directly led to a win, and even when we won the championships that year, he seemed just as miserable as ever. I don't think I ever saw the man laugh, and he certainly did not seem to be enjoying his role as a coach. He spent almost every afternoon and many weekends with us during softball season, yet it seemed to make him unhappy to do so. It was clear to me that he was an example of how success doesn't automatically lead to living well. All the same, I am grateful that I had this coach in my life, because it taught me that success isn't the magic solution for a happy life. It's more important to enjoy the *journey*.

I like how you used a signal phrase to **(i)ntroduce** the personal example in a smooth way and tie it in with what came earlier in the paragraph. Nice call on starting a new paragraph here because the first one had become quite long.

Here it shows how the details from the personal story prove the topic sentence, making the evidence even more convincing. This is another good example of the **(E)xplain** in I.C.E.

2.3 Text-to-Self Comparison

Value	Ideas and Impressions	Presentation
 Excellent	<input checked="" type="checkbox"/> Your discussion of the essential question is <i>insightful and complex</i> . <input checked="" type="checkbox"/> You provide <i>precise, detailed</i> textual evidence from one of the short stories to reinforce ideas. <input checked="" type="checkbox"/> You provide <i>precise, detailed</i> support from a personal example to reinforce ideas.	<input checked="" type="checkbox"/> You <i>skillfully</i> develop a unifying effect through the use of the I.C.E. method, a topic sentence, and other organizational techniques. <input checked="" type="checkbox"/> You use word choice, grammar, spelling, and punctuation <i>skillfully</i> and fluently.
 Proficient	<input type="checkbox"/> Your discussion of the essential question is <i>thoughtful and detailed</i> . <input type="checkbox"/> You provide <i>relevant</i> textual evidence from one of the short stories to reinforce ideas. <input type="checkbox"/> You provide <i>relevant</i> support from a personal example to reinforce ideas.	<input type="checkbox"/> You <i>capably</i> develop a unifying effect through some combination of the I.C.E. method, a topic sentence, and other organizational techniques. <input type="checkbox"/> You use word choice, grammar, spelling, and punctuation <i>confidently and effectively</i> .
 Satisfactory	<input type="checkbox"/> Your discussion of the essential question is <i>general but relevant</i> . <input type="checkbox"/> You provide <i>straightforward</i> textual evidence from one of the short stories to reinforce ideas. <input type="checkbox"/> You provide <i>straightforward</i> support from a personal example to reinforce ideas.	<input type="checkbox"/> You <i>adequately</i> develop a unifying effect through some combination of the I.C.E. method, a topic sentence, and other organizational techniques. <input type="checkbox"/> You use word choice, grammar, spelling, and punctuation <i>adequately</i> .
 Limited	<input type="checkbox"/> Your discussion of the essential question is <i>vague and/or superficial</i> . <input type="checkbox"/> You provide <i>vague, limited, or repetitive</i> textual evidence from one of the short stories to reinforce ideas. <input type="checkbox"/> You provide <i>vague, limited, or repetitive</i> support from a personal example to reinforce ideas.	<input type="checkbox"/> You <i>inadequately</i> develop a unifying effect . <input type="checkbox"/> You use word choice, grammar, spelling, and punctuation <i>inadequately</i> .
 Resubmission Needed	Your attempt to respond is <i>insufficient</i> . Contact your teacher to discuss suggestions for improvement and resubmission of your work.	
TOTAL: 24/25 = 96%	15/15	9/10
 Assessment	<p>Areas of strength: Wow, Sabah! You did an amazing job of selecting examples from the short story and from your own life to support your answer to the essential question. I like how the example from the book shows how people can influence us to behave positively, and the example from your own life shows how people can influence us negatively. Impressive use of the I.C.E. method to introduce, cite, and explain your evidence (both personal and textual). This is a very well-written piece! Your organization (unifying effect) is very effective. Your topic sentence answers the essential question with a "because" clause. You use transition phrases to make your writing flow, and ideas are ordered in a logical way.</p> <p>Might I suggest: Always be sure to read your work aloud to check for sentences that are awkwardly worded. (e.g., "I had a softball coach my first year on the team, and his only goal was for our team to win." Is better off written as "My first year on the softball team, I had a coach whose only goal was for our team to win.")</p>	