

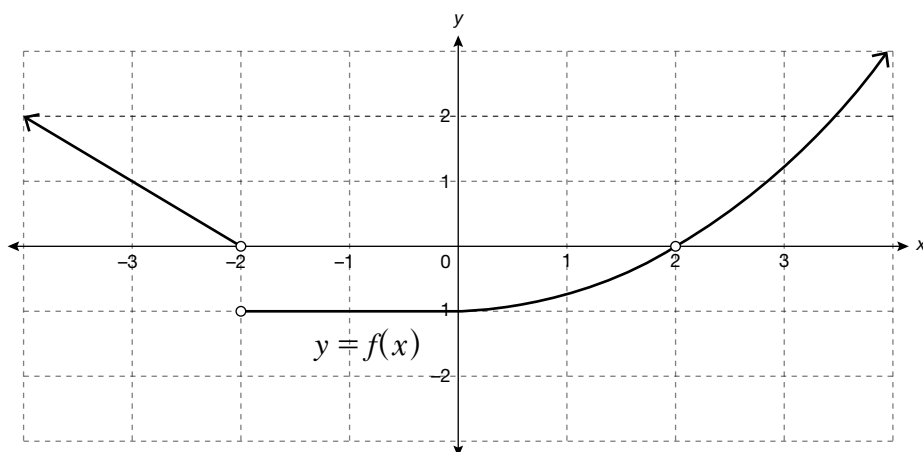


Practice – 1

Once you feel confident with limits, complete problems 1 and 2. Check your answers by going to the Solutions tab in Moodle.

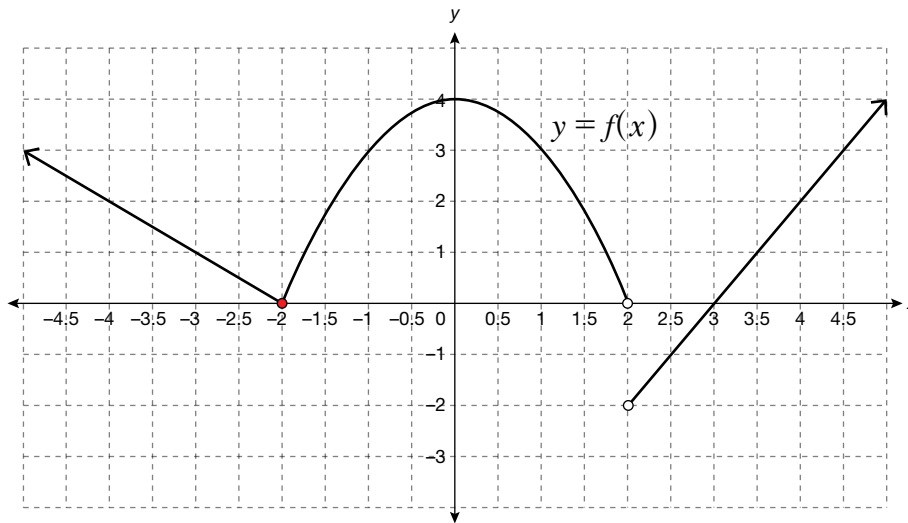
Instructions: Answer each of the following practice questions on a separate piece of paper. Step by step solutions are provided under the Solutions tab. You will learn the material more thoroughly if you complete the questions before checking the answers.

1. The graph of the function $y = f(x)$ is shown.



- For which x -values is the function undefined?
- Determine $\lim_{x \rightarrow -2^-} f(x)$, $\lim_{x \rightarrow -2^+} f(x)$, $\lim_{x \rightarrow 2^-} f(x)$, and $\lim_{x \rightarrow 2^+} f(x)$.
- Determine $\lim_{x \rightarrow -2} f(x)$ and $\lim_{x \rightarrow 2} f(x)$.

2. The graph of the function $y = f(x)$ is shown below.



Determine the following.

- $\lim_{x \rightarrow -2} f(x)$
- $\lim_{x \rightarrow 2} f(x)$